

Part number:

HYDROMA

HYDRAULICKÉ SYSTÉMY

**HIDROMA
SYSTEMS**

UKŁADY HYDRAULICZNE

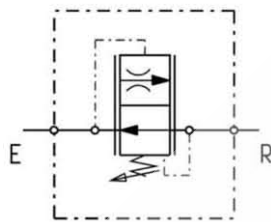
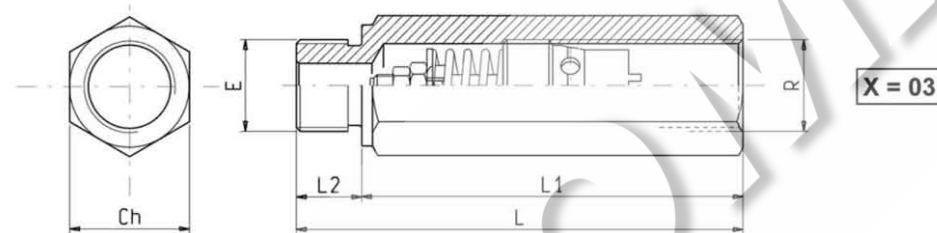
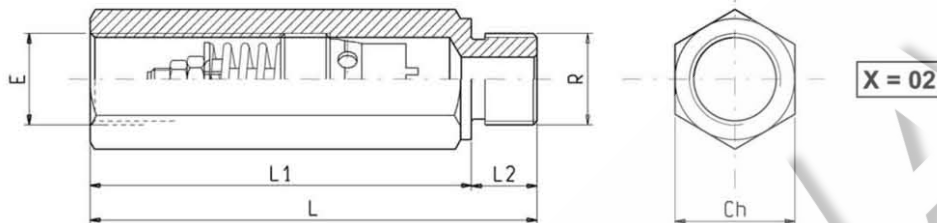
HYDROMA

ГИДРАВЛИЧЕСКИЕ СИСТЕМЫ

FLOW CONTROL VALVES

COMPENSATED INSERT-TYPE WITH MALE-FEMALE SLEEVE

VCDC-H-MF



FEATURES - RATINGS

Maximum Operating Pressure

300 bar

Rated Flow

see table

- See sheet 3.21.05 for curves, features and functional details of VCDC-H insert-type valves.
- See sheet 6.21.01 to order sleeves separately.

ORDERING CODE	PORTS E - R	Ch	L	L1	L2	FLOW MAX. l/min	Weight Kg	Valves to be inserted
OE.22.03 - X - 09 - Z	G 1/4	19	78	66	12	10	0.112	OD.22.03.02.09 - Z VCDC - H - 14
OE.22.03 - X - 02 - Z	G 3/8	22	82	70	12	25	0.145	OD.22.03.02.02 - Z VCDC - H - 38
OE.22.03 - X - 03 - Z	G 1/2	27	96	82	14	67	0.228	OD.22.03.02.03 - Z VCDC - H - 12
OE.22.03 - X - 04 - Z	G 3/4	32	110	94	16	150	0.410	OD.22.03.02.04 - Z VCDC - H - 34

Z	REGULATED FLOW RANGE E > R l/min			
	G 1/4	G 3/8	G 1/2	G 3/4
01	/	2.5 - 4.0	16 - 21	37 - 50
02	1 - 1.6	4.0 - 6.3	21 - 28	50 - 67
03	1.6 - 2.5	6.3 - 10	28 - 37	67 - 90
04	2.5 - 4.0	10 - 16	37 - 50	90 - 120
05	4.0 - 6.3	16 - 25	50 - 67	120 - 150
06	6.3 - 10	/	/	/