

Part number:

HYDROMA

HYDRAULICKÉ SYSTÉMY

**HIDROMA
SYSTEMS**

UKŁADY HYDRAULICZNE

HYDROMA

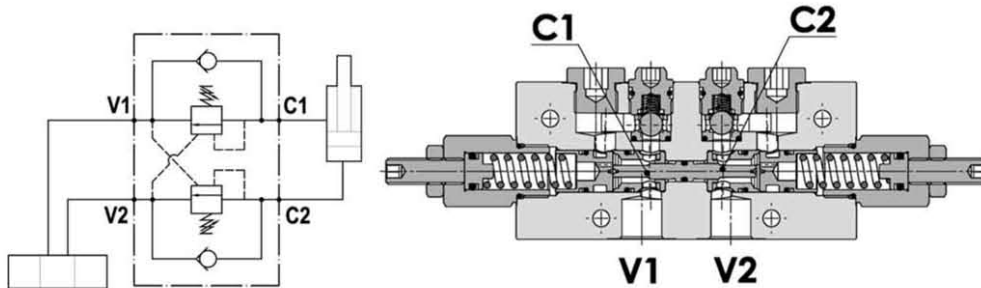
ГИДРАВЛИЧЕСКИЕ СИСТЕМЫ

Tipo / Type

FPOE 40 D-3/8-2F-A-*.*

Valvola overcenter doppia, montaggio a flangia, serie E
Dual overcenter valve, gasket mounted, E series

Rev.01-2010/02



SPECIFICHE TECNICHE

Materiali: corpo in alluminio. I componenti interni sono in acciaio trattato termicamente.

Portata max.: 40 l/min

Taratura max.: 350 bar

Rapporto di pilotaggio: 2.9 : 1 (a richiesta 6.6 : 1)

Regolazione pressione: mediante vite

Campo di regolazione pressione: vedere pag.02

Peso: 0,900 Kg

TECHNICAL SPECIFICATIONS

Materials: body is in aluminium alloy. Internal parts are in hardened steel.

Rated flow: up to 40 l/min

Max. setting: 350 bar

Pilot ratio: 2.9 : 1 (standard), 6.6 : 1 on request

Adjustment means: leakproof screw adjustment

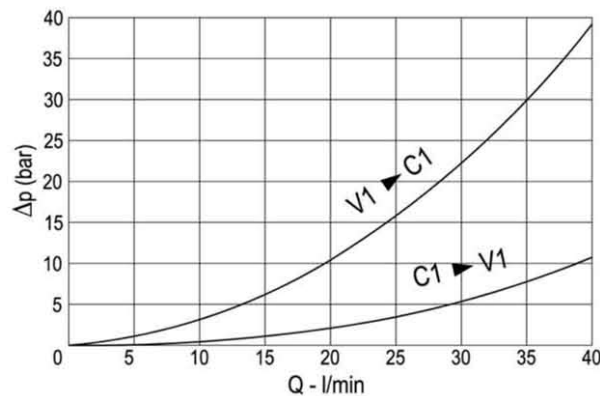
Adjustable pressure range: see page 02

Weight: 0,900 Kg

DIAGRAMMA PERDITE DI CARICO - PRESSURE DROP CURVES

Viscosità olio 24 mm²/sec. (3,5 °E)
Temperatura 50 °C

Oil viscosity 24 mm²/sec. (3,5 °E)
Temperature 50 °C

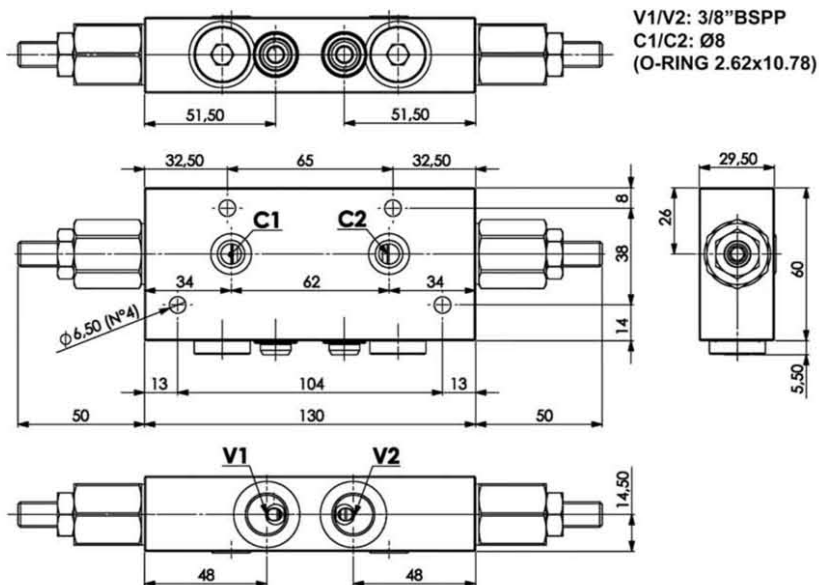


Tipo / Type

FPOE 40 D-3/8-2F-A-*.*

Valvola overcenter doppia, montaggio a flangia, serie E
Dual overcenter valve, gasket mounted, E series

Rev.01-2010/02



MOLLE - SPRINGS					*
Codice Code	Rapp. pil. Pilot ratio	Campo taratura min.-max. bar Adjustable pressure range bar	Increment. press. bar/giro vite Pressure increase bar/turn	Taratura standard bar Standard setting bar	Colore Color
20	1 : 2.9	60 - 210	51	200	Verde Green
20	1 : 6.6	60 - 210	51	200	Verde Green
35	1 : 2.9	120 - 350	88	350	Rosso Red
35	1 : 6.6	120 - 350	88	350	Rosso Red

ESEMPIO DI ORDINAZIONE - ORDERING CODE EXAMPLE

F P O E 4 0 D 3 / 8 2 F A 2 0 B

* "20" / "35":
Campi di taratura pressione - Adjustable pressure

Rapporto di pilotaggio - Pilot ratio
Omettere se standard *
Omit if standard
B = 1 : 6.6