

Part number:

HYDROMA

HYDRAULICKÉ SYSTÉMY

**HIDROMA
SYSTEMS**

UKŁADY HYDRAULICZNE

HYDROMA

ГИДРАВЛИЧЕСКИЕ СИСТЕМЫ

Tipo/Type

FPD-F.*.*.*.*.*

Sez./Section

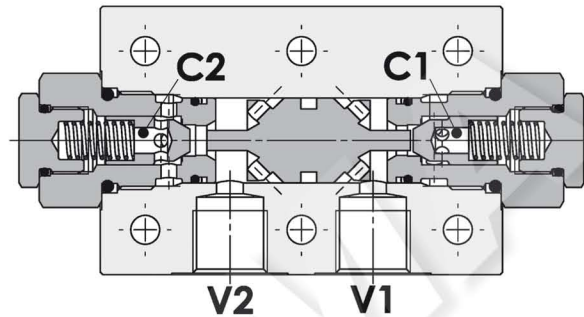
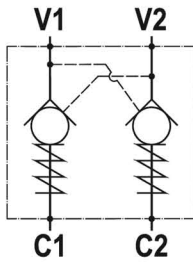
F

Pag./Page

040/1

Valvola di blocco pilotata doppia, montaggio a flangia
Double pilot operated check valve, gasket mounted

Rev.01-2010/02



SPECIFICHE TECNICHE

Materiali: corpo in alluminio, a richiesta in acciaio. I componenti interni sono in acciaio trattato termicamente e rettificati.

Portata max.: fino a 85 l/min

Pressione max.: vedere tabella pag. 02

Pressione di apertura: standard 2.5 bar, a richiesta 5-10 bar

TECHNICAL SPECIFICATIONS

Materials: std body is in aluminium, steel body on request. Internal parts are in hardened and ground steel.

Rated flow: up to 85 l/min

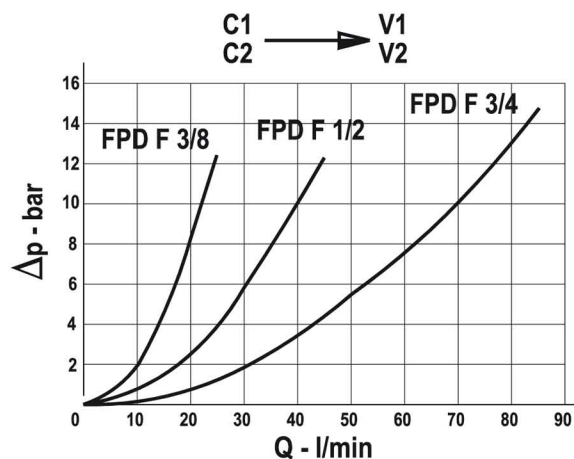
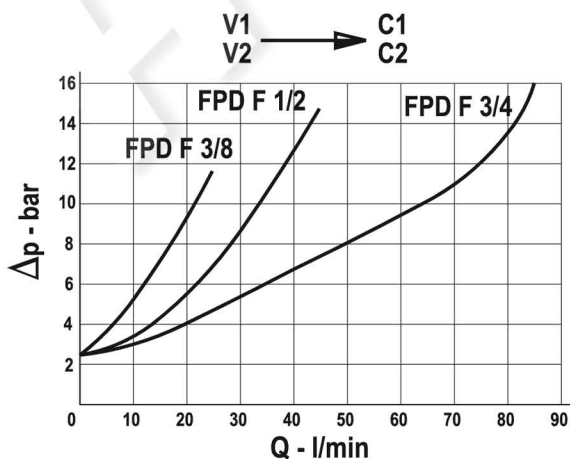
Max. pressure: see data sheet page 02

Cracking pressure: 2.5 bar standard, 5-10 bar on request

DIAGRAMMA PERDITE DI CARICO - PRESSURE DROP CURVES

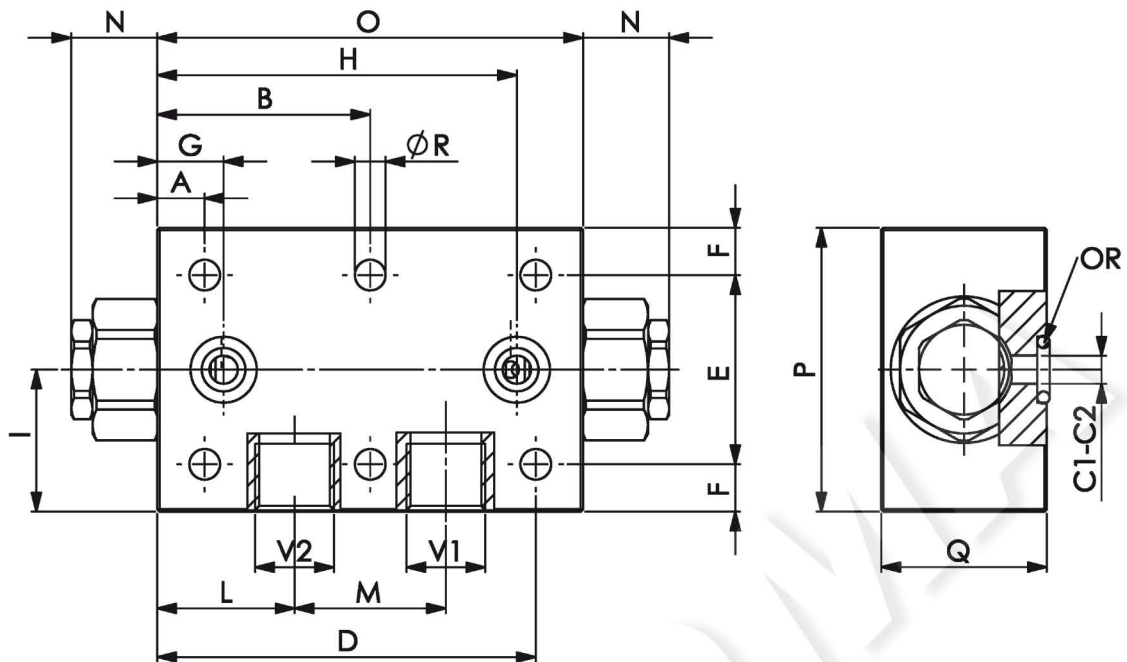
Viscosità olio 24 mm²/sec. (3,5 °E)
Temperatura 50 °C

Oil viscosity 24 mm²/sec. (3,5 °E)
Temperature 50 °C



Valvola di blocco pilotata doppia, montaggio a flangia
Double pilot operated check valve, gasket mounted

Rev.01-2010/02



TIPO TYPE	PORTATA MAX. MAX FLOW	PRESS. MAX. MAX PRESSURE	V1 V2	C1 C2	A	B	D	E	F	G	H	I	L	M	N	O	P	Q	R	RAPP. DI PILOTAGGIO PILOT RATIO	PESO WEIGHT
	L/MIN	BAR	BSP	mm	mm	mm	mm	mm	mm	mm	mm	mm	mm	mm	mm	mm	mm	mm	mm		Kg
FPD F 3/8	30	250 – 350(S)	3/8"	6	10	45	80	40	10	14	76	30	29	32	18.5	90	60	34.5	6.5	1 : 7 1 : 4(B)	0.650 – 1.400(S)
FPD F 1/2	45	250 – 350(S)	1/2"	8	15	55	95	40	15	22.5	87.5	35	38	34	14.5	110	70	34.5	8.5	1 : 3.5	0.750 – 1.800(S)
FPD F 3/4	85	250 – 350(S)	3/4"	14	15	82.5	150	50	20	30	135	45	57.5	50	14	165	90	49.5	10.5	1 : 4	2.300 – 5.200(S)

Queste valvole, data la loro configurazione, non consentono una elevata contropressione allo scarico

These valves, owing to their configuration, can't allow for an high discharge pressure

	FPD F 3/8"	FPD F 1/2"	FPD F 3/4"
Guarnizione OR – OR seal	9,19x2,62	15,54x2,62	18,64x3,53

ESEMPIO DI ORDINAZIONE - ORDERING CODE EXAMPLE

F P D F 1 / 2 2 , 5 G B * *

- | | | | |
|---|--|---|--|
| <p>3/8 – 3/8" BSP</p> <p>* 1/2 – 1/2" BSP</p> <p>3/4 – 3/4" BSP</p> <p>Connessioni - Port sizes</p> | <p>2.5 bar (std) – 5 bar – 10 bar</p> <p>* Pressione apertura ritengo, omettere se std</p> <p>Cracking pressure, omit if std</p> | <p>* Guarnizione sul pilota, omettere se non richiesta</p> <p>With o-ring on pilot valve, omit if not requested</p> | <p>Guarnizioni – Seals:
V=Viton *</p> <p>Omettere se BUNA-N – Omit if BUNA-N</p> <p>Mat. corpo: omettere se alluminio, S=acciaio *</p> <p>Body material: omit if aluminium, S=steel</p> <p>B - solo per FPD F 3/8 R.PIL: 1:4</p> <p>B - only for FPD F 3/8 R.PIL: 1:4 *</p> <p>Omettere se std - omit if std</p> |
|---|--|---|--|