

Part number:

HYDROMA

HYDRAULICKÉ SYSTÉMY

**HIDROMA
SYSTEMS**

UKŁADY HYDRAULICZNE

HYDROMA

ГИДРАВЛИЧЕСКИЕ СИСТЕМЫ

Tipo / Type

FPT.*

Sez / Section

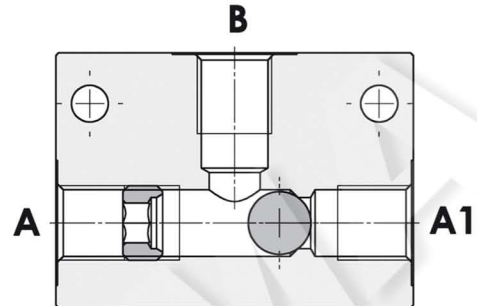
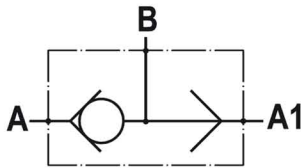
G

Pag. / Page

050/1

Valvola di commutazione, montaggio in linea
Shuttle valve, line mounted

Rev.02-2010/08



SPECIFICHE TECNICHE

Materiali: corpo in acciaio. La sfera è in acciaio trattato termicamente. La superficie esterna è protetta mediante zincatura.

Portata max.: fino a 110 l/min

Pressione max.: 350 bar

TECHNICAL SPECIFICATIONS

Materials: body is steel made. Ball is in hardened steel. External surface is zinc plated.

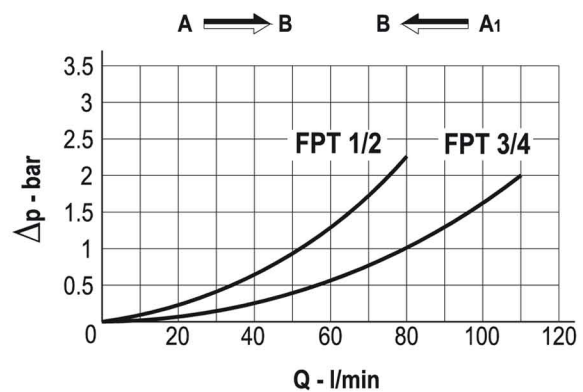
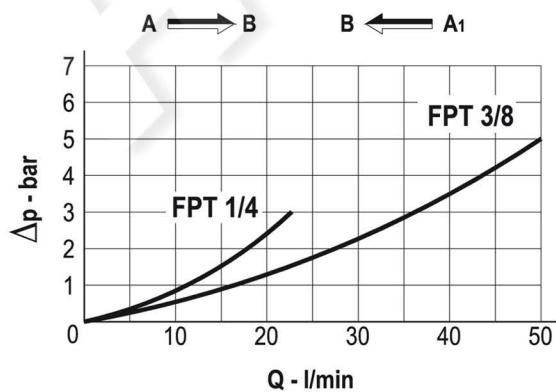
Rated flow: up to 110 l/min

Max. pressure: 350 bar

DIAGRAMMA PERDITE DI CARICO - PRESSURE DROP CURVES

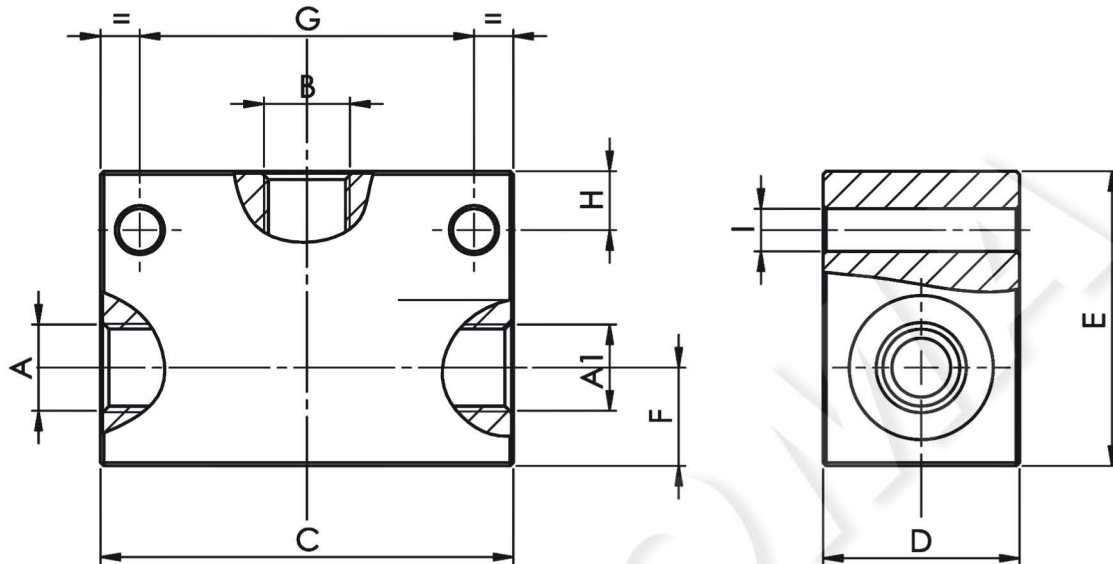
Viscosità olio 24 mm²/sec. (3,5 °E)
Temperatura 50 °C

Oil viscosity 24 mm²/sec. (3,5 °E)
Temperature 50 °C



Valvola di commutazione, montaggio in linea
Shuttle valve, line mounted

Rev.02-2010/08



TIPO TYPE	PORTATA MAX. MAX FLOW	A-A1 B	C	D	E	F	G	H	I	PESO WEIGHT
	L/MIN	BSPP	mm	mm	mm	mm	mm	mm	mm	Kg
FPT 1/4	25	1/4"	63	30	45	15	51	9	6.5	0.570
FPT 3/8	50	3/8"	63	30	45	15	51	9	6.5	0.530
FPT 1/2	80	1/2"	90	40	60	20	75	7.5	8.5	1.450
FPT 3/4	110	3/4"	90	40	60	20	75	7.5	8.5	1.350

ESEMPIO DI ORDINAZIONE - ORDERING CODE EXAMPLE

F P T **3 / 8**

1/4 - 1/4" BSPP
 3/8 - 3/8" BSPP
 * 1/2 - 1/2" BSPP
 3/4 - 3/4" BSPP

Connessioni - Port sizes