

Part number:

009-10192a

**HYDROMA**

HYDRAULICKÉ SYSTÉMY

**HIDROMA  
SYSTEMS**

UKŁADY HYDRAULICZNE

**HYDROMA**

ГИДРАВЛИЧЕСКИЕ СИСТЕМЫ

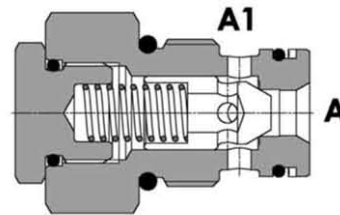
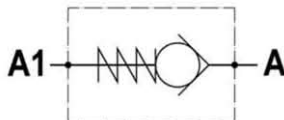
Tipo / Type

**FPR C- \*- \*- \***

Sez./Section

**D**

Valvola di ritegno unidirezionale, versione cartuccia  
Check valve, cartridge version



**SPECIFICHE TECNICHE**

**Materiali:** corpo in acciaio. L'otturatore conico guidato è in acciaio trattato termicamente. La superficie esterna è protetta mediante zincatura.

**Portata:** fino a 70 l/min

**Pressione max.:** 350 bar

**Pressione di apertura:** standard 0,5 bar, a richiesta 2,5-5-10 bar

**TECHNICAL SPECIFICATIONS**

**Materials:** body is steel made. Guided poppet is in hardened steel. External surface is zinc plated.

**Rated flow:** up to 70 l/min

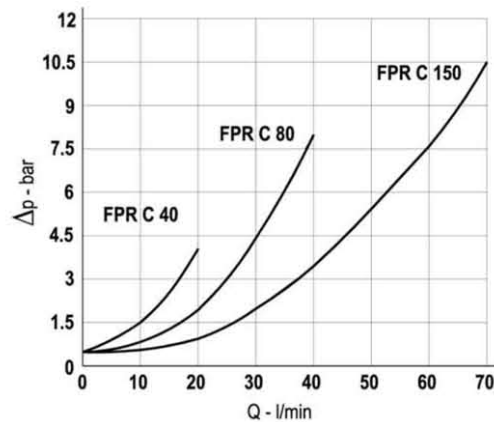
**Max. pressure:** 350 bar, see data sheet

**Cracking pressure:** 0.5 bar standard, 2,5-5-10 bar on request

**DIAGRAMMA PERDITE DI CARICO - PRESSURE DROP CURVES**

Viscosità olio 24 mm<sup>2</sup>/sec. (3,5 °E)  
Temperatura 50 °C

Oil viscosity 24 mm<sup>2</sup>/sec. (3,5 °E)  
Temperature 50 °C



Part number:

**009-10192b**

**HYDROMA**

HYDRAULICKÉ SYSTÉMY

**HIDROMA  
SYSTEMS**

UKŁADY HYDRAULICZNE

**HYDROMA**

ГИДРАВЛИЧЕСКИЕ СИСТЕМЫ

Tipo / Type

**FPR C- \*- \*- \***

Sez./Section

**D**

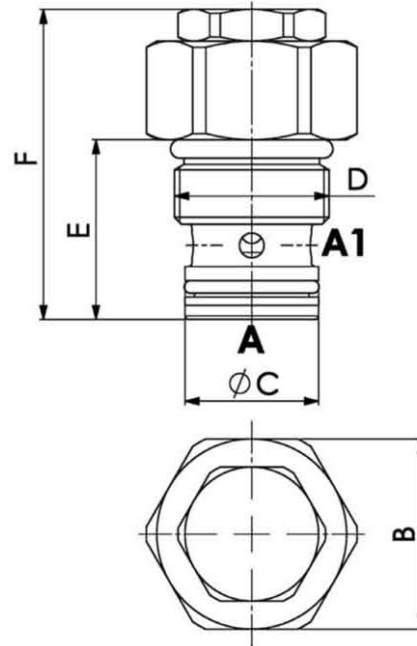
Valvola di ritegno unidirezionale, versione cartuccia  
Check valve, cartridge version

**COPPIA DI SERRAGGIO – INSTALLATION TORQUE**

Tipo - Type	Nm
FPR C 40	50 - 60
FPR C 80	50 - 60
FPR C 150	110 - 120

**CAVITA' – CAVITY**

Tipo - Type	
FPR C 40	22221
FPR C 80	22222
FPR C 150	22331



TIPO TYPE	PORTATA MAX. MAX. FLOW	PRESSIONE MAX. MAX. PRESSURE	B	Ø C	D	E	F	PESO WEIGHT
	l/min	bar						mm
FPR C 40	20	350	27	19	M22x1.5	25.5	44	0.090
FPR C 80	40	350	27	19	M22x1.5	35.5	50	0.095
FPR C 150	70	300	38	28	M33x2	43	60	0.230

**ESEMPIO DI ORDINAZIONE – ORDERING CODE EXAMPLE**

