

Part number:

**HYDROMA**

HYDRAULICKÉ SYSTÉMY

**HIDROMA**  
SYSTEMS

UKŁADY HYDRAULICZNE

**HYDROMA**

ГИДРАВЛИЧЕСКИЕ СИСТЕМЫ

Tipo / Type

**FPR-\*.\***

Sez./Section

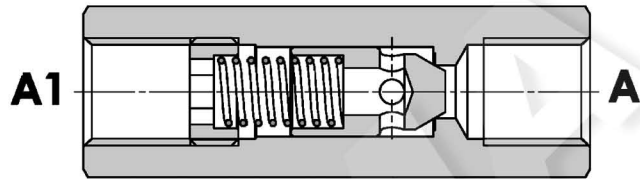
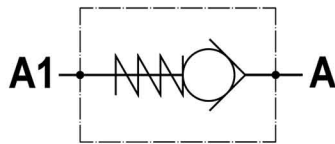
**D**

Pag./Page

**025/1**

**Valvola di ritegno unidirezionale**  
**Check valve**

Rev.03-2022/06



#### SPECIFICHE TECNICHE

**Materiali:** corpo in acciaio. L'otturatore conico guidato è in acciaio trattato termicamente. La superficie esterna è protetta mediante zincatura.

**Portata:** fino a 310 l/min

**Pressione max.:** 350 bar, vedasi tabella a parte

**Pressione di apertura:** standard 0,5 bar, a richiesta 2.5-5-10 bar

#### TECHNICAL SPECIFICATIONS

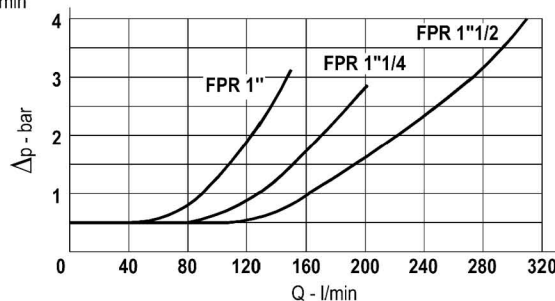
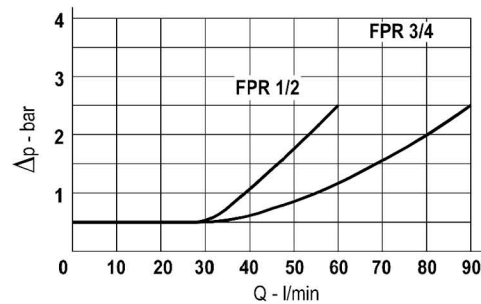
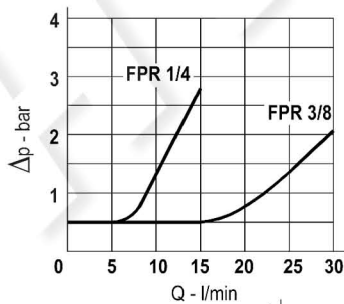
**Materials:** body is steel made. Guided poppet is in hardened steel. External surface is zinc plated.

**Rated flow:** up to 310 l/min

**Max. pressure:** 350 bar, see data sheet

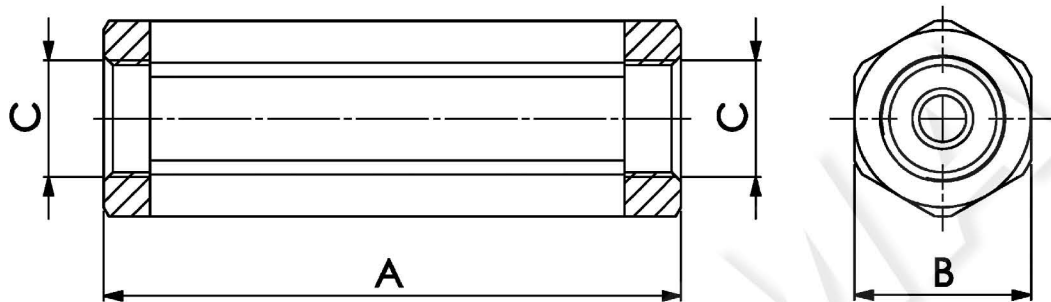
**Cracking pressure:** 0,5 bar standard, on request: 2.5-5-10 bar

#### DIAGRAMMA PERDITE DI CARICO PRESSURE DROP CURVES



**Valvola di ritegno unidirezionale**  
**Check valve**

Rev.03-2022/06



TIPO TYPE	PORTATA MAX. MAX FLOW	PRESSIONE MAX. MAX PRESSURE	A	B	C	PESO WEIGHT
	L/MIN	BAR	mm	mm	BSPP	Kg
FPR 1/4"	15	350	62	19	1/4"	0,10
FPR 3/8"	30	350	68	24	3/8"	0,17
FPR 1/2"	60	320	78	27	1/2"	0,22
FPR 3/4"	90	300	88	36	3/4"	0,45
FPR 1"	150	250	112	46	1"	0,97
FPR 1 1/4"	200	250	142	55	1 1/4"	1,68
FPR 1 1/2"	310	210	155	60	1 1/2"	2,10

**ESEMPIO DI ORDINAZIONE - ORDERING CODE EXAMPLE**

**F P R**    **1 / 4**    **2 , 5**

- 1/4 - 1/4" BSPP
  - 3/8 - 3/8" BSPP
  - 1/2 - 1/2" BSPP
  - \* 3/4 - 3/4" BSPP
  - 1 - 1" BSPP
  - 1 1/4 - 1 1/4" BSPP
  - 1 1/2 - 1 1/2" BSPP
- Connessioni - Port sizes

- 0.5 bar (std)
- 2.5 bar
- 5 bar \*
- 10 bar

Pressione apertura ritegno, omettere se std  
Cracking pressure, omit if standard