

Part number:

HYDROMA

HYDRAULICKÉ SYSTÉMY

**HIDROMA
SYSTEMS**

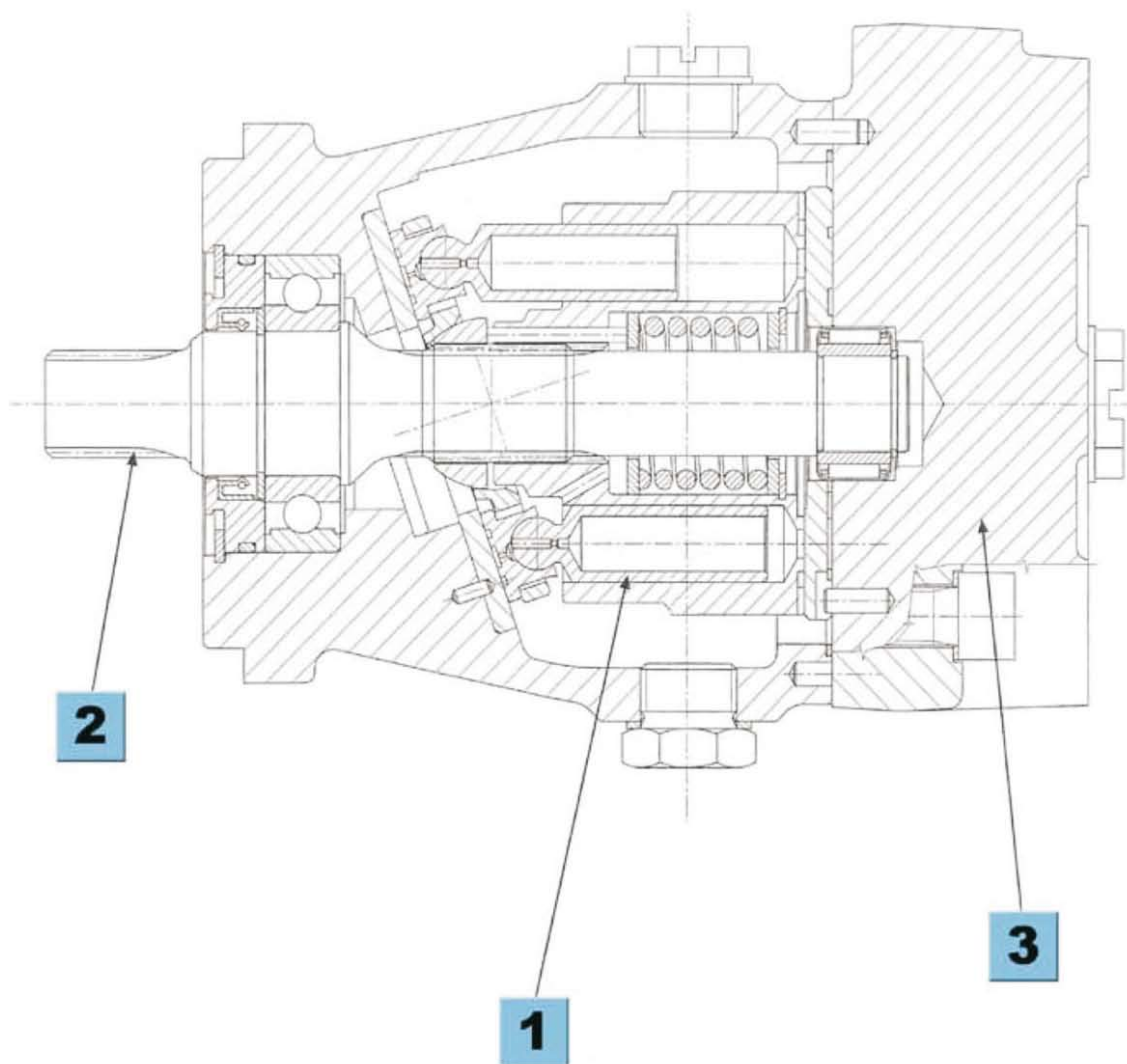
UKŁADY HYDRAULICZNE

HYDROMA

ГИДРАВЛИЧЕСКИЕ СИСТЕМЫ

"M2" Come ordinare

How to order "M2"



SIGLA DI ORDINAZIONE
ORDER CODE

M2	34	S3	04	00	00	0000
	1	2	3	4	5	6

1	CILINDRATA	DISPLACEMENT
24	24,41 cm ³ /giro	24,43 cm ³ /rev
28	28,34 cm ³ /giro	28,36cm ³ /rev
34	34,36 cm ³ /giro	34,39 cm ³ /rev
40	41,11 cm ³ /giro	41,15 cm ³ /rev
50	49,06 cm ³ /giro	49,11 cm ³ /rev
2	ALBERO	SHAFT
C3	Cilindrico D = 22,22 (standard)	D = 22,22 (standard)
D6	Cilindrico D = 25	D = 25
S3	Scanalato Z = 13 16/32 D.P. (standard)	Z = 13 16/32 D.P. (standard)
S4	Scanalato Z = 15 16/32 D.P.	Z = 15 16/32 D.P.
3	ATTACCHI	CONNECTIONS
02	Laterali	Side
04	Posteriori	Rear
05	Laterali e posteriori	Side and rear
4	OPTIONALS	OPTIONS
00	Senza optionals	Without options
BV	Bypass a vite	Screw bypass
CR	Cuscinetto a rulli	Roller bearing
DP	Drenaggio posteriore	Rear drain port
RA	Valvola anticavitazione su "A"	Anticavitation valve on "A"
RB	Valvola anticavitazione su "B"	Anticavitation valve on "B"
RR	Valvola anticavitazione su "A + B"	Anticavitation valve on "A + B"
VS	Valvola di scambio	Purge valve
5	ESECUZIONI SPECIALI	SPECIAL EXECUTIONS
00	Esecuzione standard (filetti 3/4" gas)	Standard execution (3/4" gas threads)
FM	Filettature metriche (per quantità)	Metric threads (for quantities)
FS	Flange SAE (per quantità)	SAE flanges (for quantities)
FU	Filetti UNF + O-ring (per quantità)	UNF threads (for quantities)
ES	Esecuzione speciale	Special execution

Nota: nel campo 6 sono da indicare le tarature delle eventuali valvole di max. pressione a bordo del motore
Note: in field nr.6 the settings of possible max. relief valves on the motor must be indicated

Esempio di ordinazione

M2 34 S3 04 RA FS

Ordine per motore da 34,39 cm³/giro, albero scanalato Z13 standard, attacchi posteriori, valvola anticavitazione su "A", flange SAE.

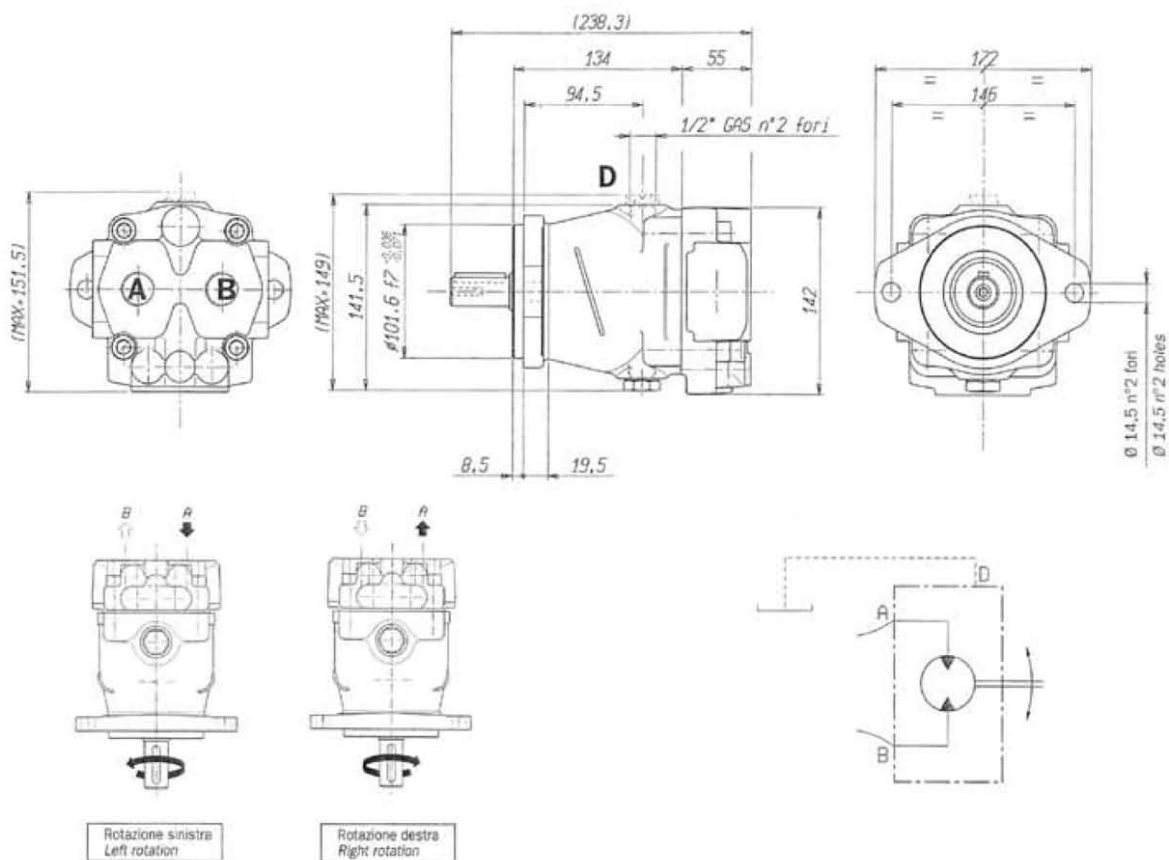
Example of order code

M2 34 S3 04 RA FS

Order for motor 34,39 cm³/rev., standard parallel shaft Z13, rear connections, anticavitation valve on "A", SAE flanges.

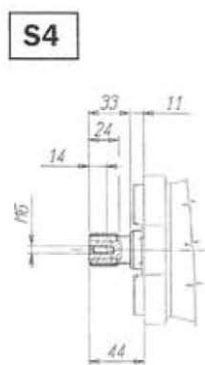
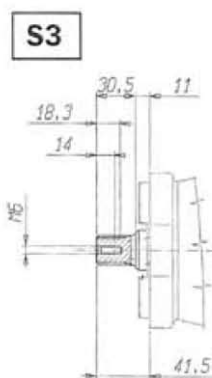
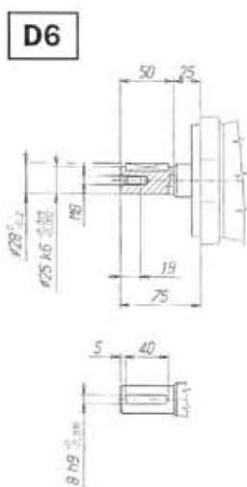
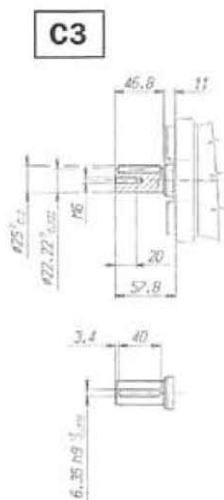
Motori "M2"

"M2" Motors



Alberi

Shafts



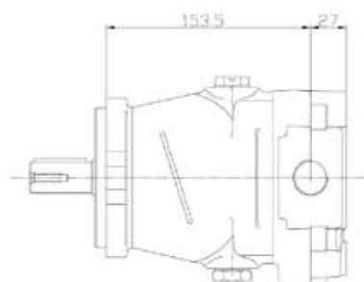
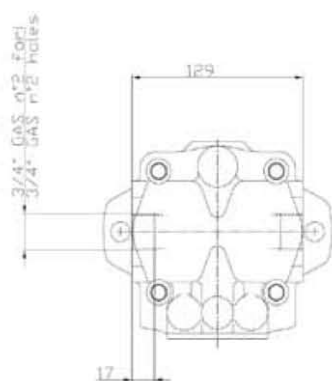
Passo 16/32°
Z 13
Angolo di pressione 30°
Classe di tolleranza 5

Passo 16/32°
Z 15
Angolo di pressione 30°
Classe di tolleranza 5

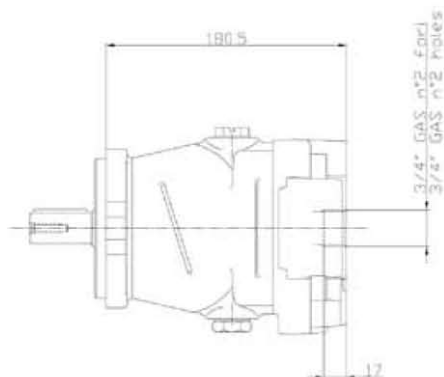
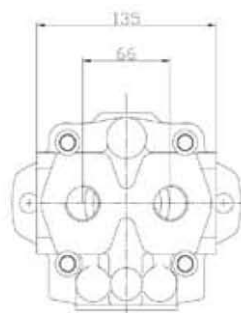
Pitch 16/32
Z 13
Pressure angle 30°
Tolerance class 5

Pitch 16/32
Z 15
Pressure angle 30°
Tolerance class 5

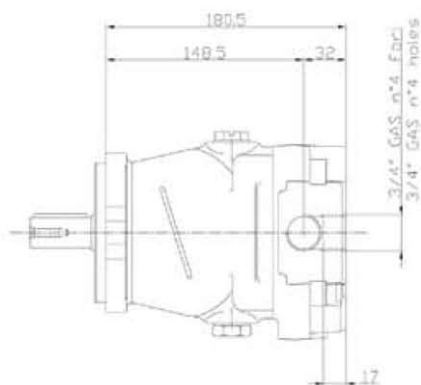
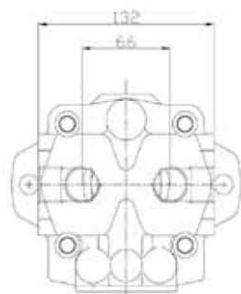
02 Attacchi laterali
Lateral connection



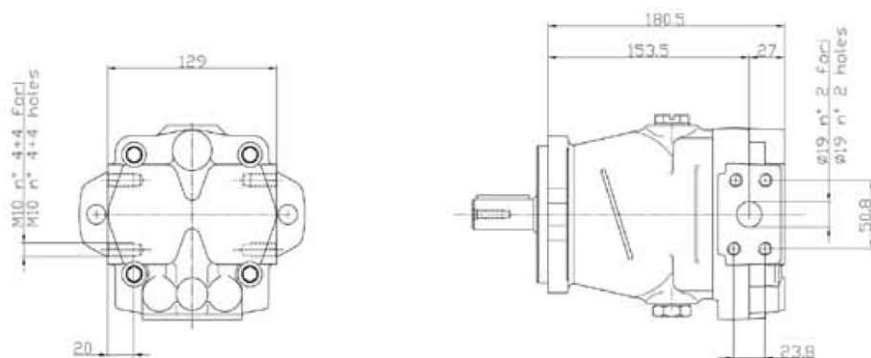
04 Attacchi posteriori
Rear connection



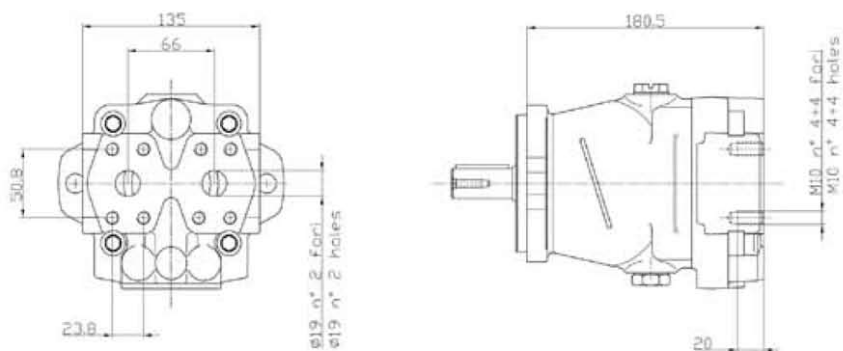
05 Attacchi laterali + posteriori
Lateral + Rear connection

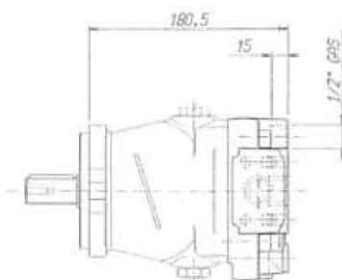


02 Attacchi laterali 3/4" SAE 6000
Lateral connection 3/4" SAE 6000

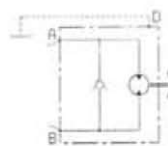
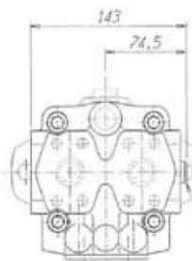
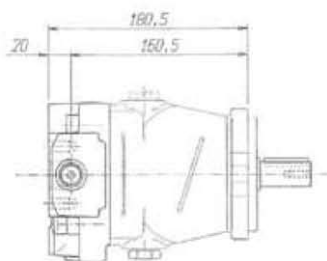
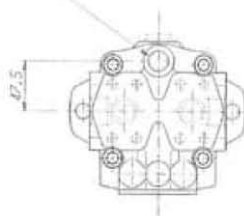


04 Attacchi posteriori 3/4" SAE 6000
Rear connection 3/4" SAE 6000

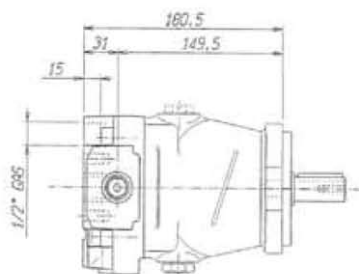




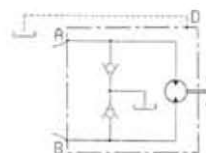
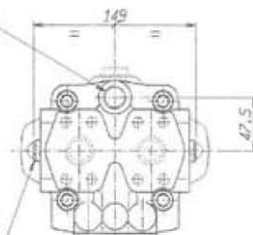
DP Foro di drenaggio posteriore: opzionale per tutte le versioni
Rear drain port: optional for all versions



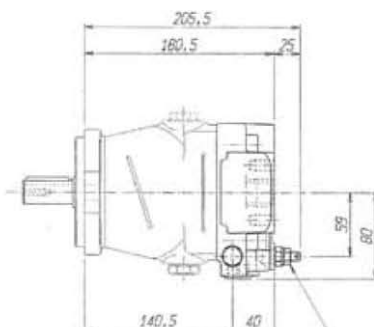
RB Valvola di riempimento
Anticavitation valve on B



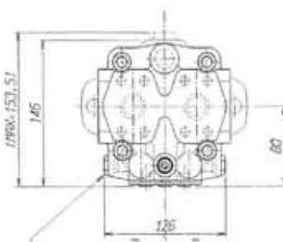
Foro per drenaggio
Drain port



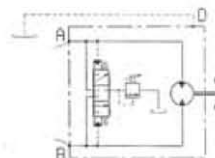
RR n° 2 Valvole di riempimento
Anticavitation valve on A+B



Valvola massima di scambio
Purge pressure valve



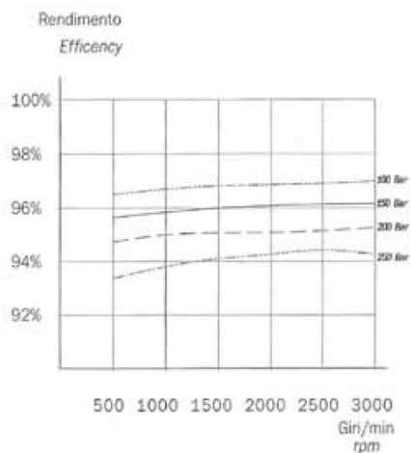
VS Valvola di scambio
Purge valve



Curve prestazioni motore

Rendimento volumetrico

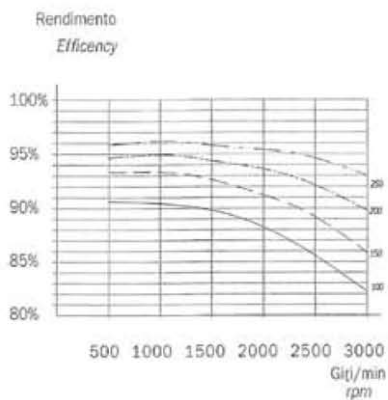
Volumetric efficiency



Motor performance curves

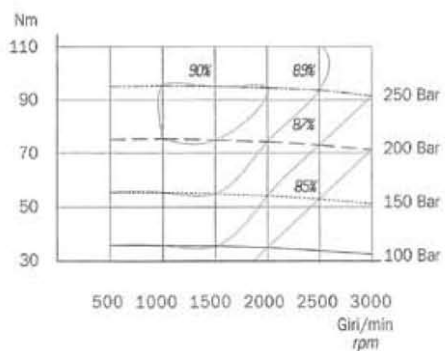
Rendimento meccanico

Mechanical efficiency



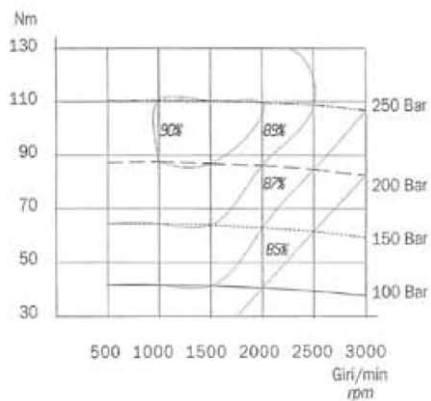
Rendimento totale Motore M2-24

M2-24 Motor Total efficiency



Rendimento totale Motore M2-28

M2-28 Motor Total efficiency

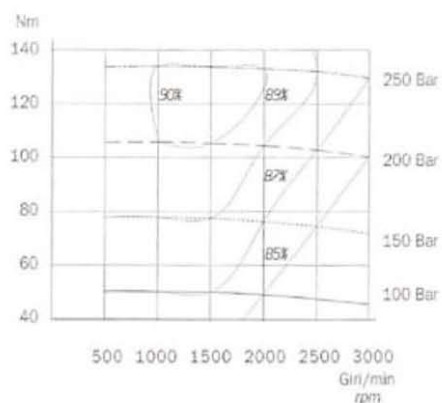


Curve prestazioni motore

Motor performance curves

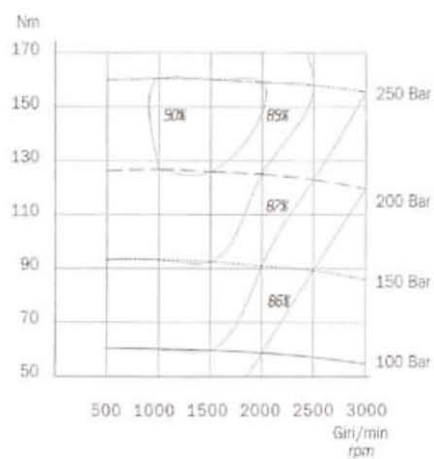
Rendimento totale Motore M2-34

M2-34 Motor Total efficiency



Rendimento totale Motore M2-40

M2-40 Motor Total efficiency



Rendimento totale Motore M2-50

M2-50 Motor Total efficiency

