

Part number:

**HYDROMA**

HYDRAULICKÉ SYSTÉMY

**HIDROMA  
SYSTEMS**

UKŁADY HYDRAULICZNE

**HYDROMA**

ГИДРАВЛИЧЕСКИЕ СИСТЕМЫ

# PDM - PDT

## Piastre per elettrovalvole LC 2 *Plates for solenoid valves LC 2*



### CARATTERISTICHE TECNICHE

Grandezza: NG10 ISO4401-05 CETOP RP121 H-05 (CETOP 5)

Disponibili con o senza valvola limitatrice di pressione

Versione in ghisa EN GJL 250

Pressione max di lavoro: 310 bar

Circuiti in parallelo. Circuiti in serie a richiesta.

### TECHNICAL CHARACTERISTICS

Size: NG10 ISO4401-05 CETOP RP121 H-05 (CETOP 5)

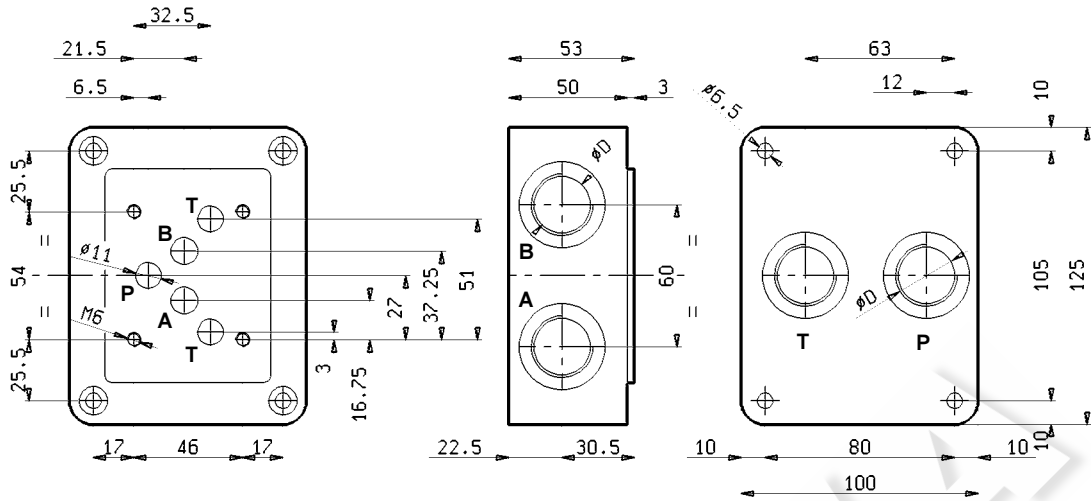
*Available with or without pressure relief valve*

*Version made in cast-iron EN GJL 250*

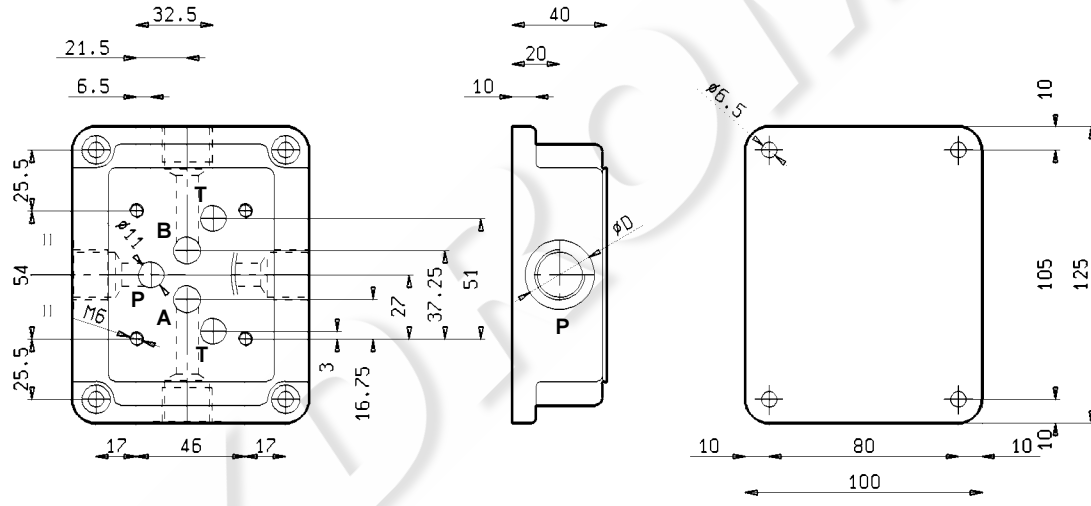
*Max working pressure: 310 bar*

*Parallel circuits. Series circuits by request.*

Codice · Code	Descrizione · Description	Attacchi · Ports	Peso · Weight
<b>PDM321</b>	<b>Attacchi A-B laterali, P-T inferiori</b> Side A-B ports, rear P-T	(D) 3/4" Gas	3,65 kg

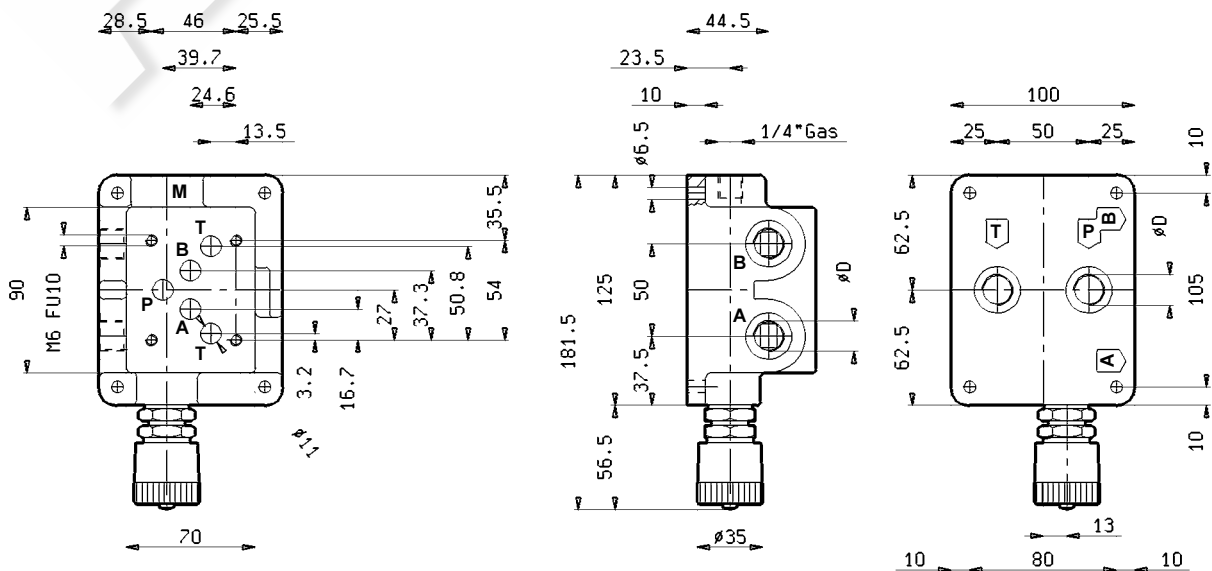


Codice · Code	Descrizione · Description	Attacchi · Ports	Peso · Weight
<b>PDM221LAT</b>	<b>Attacchi A-B-P-T laterali</b> Side A-B-P-T ports	1/2" Gas	2,66 kg

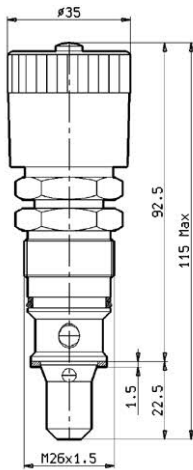


Codice · Code	Descrizione · Description	Attacchi · Ports	Peso · Weight
<b>PDM223</b> <b>PDM323</b>	<b>Attacchi A-B laterali, P-T inferiori con valvola limitatrice di pressione VM7 incorporata</b> Side A-B ports, rear P-T with built-in pressure relief valve VM7	1/2" Gas 3/4" Gas	5,17 kg 5,00 kg

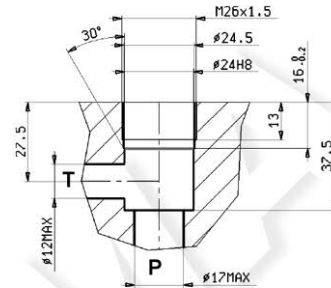
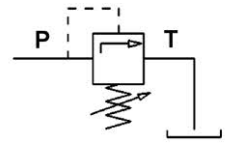
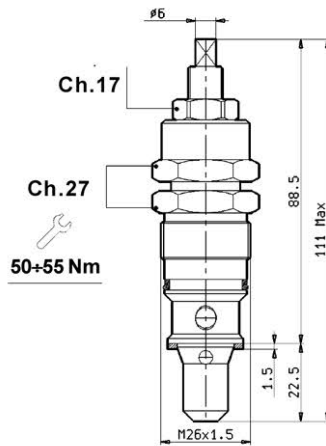
**M = Attacco manometro**  
Manometer port



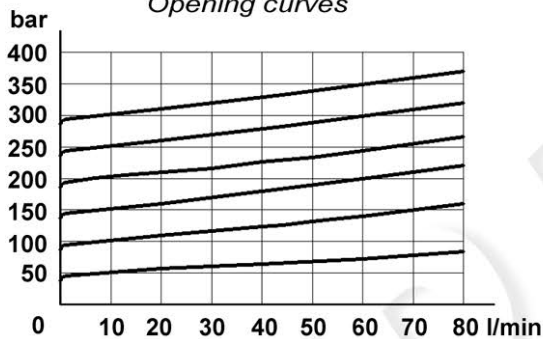
Tipo **V**  
Type



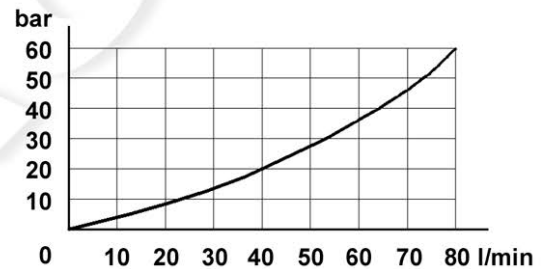
Tipo **F**  
Type



**Curve di apertura**  
*Opening curves*

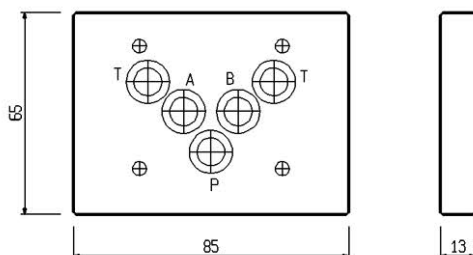


**Valore min di taratura**  
*Min adjustable setting*



Tipo Type	<b>W</b>		Portata Max. Max. flow  l/min	Pressione Max. Max. pressure  bar	Campo di taratura Pressure range bar	Cavità Cavity  n°	Peso Weight  kg
	Regolazione a volantino <i>Knob adjustment</i>	Regolazione a vite <i>Screw adjustment</i>					
VM 10	0V	0F	80	310	0+60	13	0,25
	1V	1F			10+140		
	2V	2F			20+200		
	3V	3F			50+310		

### PIASTRE DI CHIUSURA • CLOSING PLATES



Tipo Type	Peso Weight	Codice Code
Chiusura Closing	0,190 kg	PA05001