

Part number:

048-10006

HYDROMA

HYDRAULICKÉ SYSTÉMY

**HIDROMA
SYSTEMS**

UKŁADY HYDRAULICZNE

HYDROMA

ГИДРАВЛИЧЕСКИЕ СИСТЕМЫ

Tubo capillare alta pressione e raccordi

Micro hose for high pressure and fittings

Normativa di riferimento
Reference regulations

Tubo capillare alta pressione e raccordi
Micro hose for high pressure and fittings

Esempio per l'ordine

Ordering example

1 - Tubo / Hose type:

RSO

2 - Tipo raccordo / Fitting type:

31TN

3 - Tipo raccordo / Fitting type:

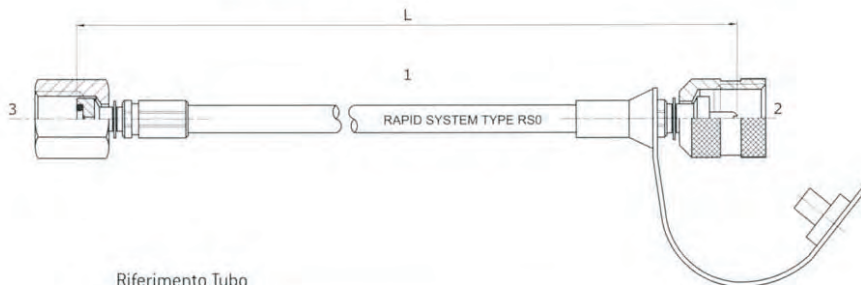
3614

L - Lung. tubo (mm.) / Hose length (mm.):

1500

Codice ordine / Order code:

RSO 31TN/3614 L1500



Riferimento Tubo
Hose code

| RSO | |
|---------------------------------------------------------------|------------|
| Diametro esterno mm. Outside diameter mm. | 5,5 |
| Diametro interno mm. Inside diameter mm. | 2,1 |
| Pressione max. di lavoro bar Max. working pressure bar | 630 |
| Pressione minima di scoppio bar Min. Bursting pressure bar | 1900 |
| Pressione di prova bar Testing pressure bar | 950 |
| Raggio minimo mm. Min. Bending radius mm. | 20 |
| Temperature di esercizio °C Working temperature | -40...+100 |

Adatto per passaggio di oli minerali, oli idraulici tipo ASTM 3, benzine, resistenza chimica all'olio per freni [tipo DOT 4]
For mineral and hydraulic oil, type ASTM 3, fuel, brake systems oil (type DOT 4)

| Materiale anima Core material | Materiale treccia Braid material | Ricopertura est. Cover material |
|-----------------------------------------------------|--------------------------------------------|--------------------------------------------------------|
| Poliestere termoplastico Thermoplastic polyester | Fibra aramidica Aramidic fibre "kevlar" | Poliuretano antiabrasione Antiabrasion polyurethane |

Riferimento Tubo
Hose code

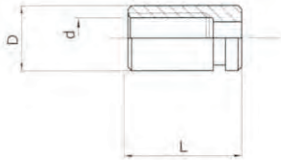
| RFR | |
|---------------------------------------------------------------|------------|
| Diametro esterno mm. Outside diameter mm. | 5,5 |
| Diametro interno mm. Inside diameter mm. | 2,1 |
| Pressione max. di lavoro bar Max. working pressure bar | 150 |
| Pressione minima di scoppio bar Min. Bursting pressure bar | 600 |
| Pressione di prova bar Testing pressure bar | 300 |
| Raggio minimo mm. Min. Bending radius mm. | 20 |
| Temperature di esercizio °C Working temperature | -40...+100 |

Adatto per passaggio Gas FREON 22 - 134A per impianti di condizionamento e refrigerazione.
For FREON 22 - 134A conduction for air conditioning and cooling systems

| Materiale anima Core material | Materiale treccia Braid material | Ricopertura est. Cover material |
|----------------------------------|-------------------------------------|-----------------------------------------------------------------|
| Poliammide Polyamide | Fibra poliestere Polyester fibre | Poliuretano con microfori Polyurethane with pricking surface |

Tubo capillare alta pressione e raccordi

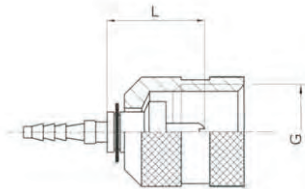
Micro hose for high pressure and fittings



Ghiera a pressare
Ferrule

| D | d | L | Codice / Ref. |
|----|-----|----|---------------|
| 8 | 5,5 | 15 | 30BT0000 |
| 8* | 5,5 | 15 | 30BTA000 |

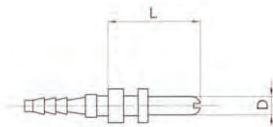
*AISI 304



Raccordo connessione avvitabile per minipresa
Test coupling threaded connection fitting

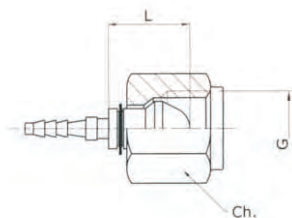
| G | L | Ch | PN bar | Codice / Ref. |
|---------|------|----|--------|---------------|
| M16x2 | 18,5 | 19 | 630 | 31TN0000 |
| M16x2* | 18,5 | 19 | 630 | 31AI0000 |
| M16x1,5 | 18,5 | 19 | 630 | 31TS0000 |

*AISI 316



Innesto per minipresa a baionetta
Plug-in connection

| D | L | PN bar | Codice / Ref. |
|-----|----|--------|---------------|
| 3,3 | 15 | 400 | 33TD0000 |



Raccordo femmina girevole connessione cono 60°
Swivel female fitting, 60° cone connection

| G | L | Ch | PN bar | Codice / Ref. |
|-----------------|----|----|--------|---------------|
| ISO 228 G 1/8" | 10 | 14 | 630 | 38180000 |
| ISO 228 G 1/4" | 13 | 17 | 630 | 38140000 |
| ISO 228 G 1/4"* | 13 | 17 | 630 | 3814AI00 |
| ISO 228 G 3/8" | 15 | 22 | 630 | 38380000 |

*AISI 316