

Part number:

**HYDROMA**

HYDRAULICKÉ SYSTÉMY

**HIDROMA  
SYSTEMS**

UKŁADY HYDRAULICZNE

**HYDROMA**

ГИДРАВЛИЧЕСКИЕ СИСТЕМЫ

## ALP4

### COME ORDINARE / HOW TO ORDER

ALP4	TIPO TYPE	ROTAZIONE ROTATION	TAGLIA SIZE	ALBERO* SHAFT*	PORTE* PORTS*	GUARNIZIONI* SEALS*	OPZIONI* OPTIONS*
	omit	D DESTRA CLOCKWISE	130				
	E	S SINISTRA COUNTER CLOCKWISE	160				
	A		190				
			220				
			250				
			270				
			300				

**Guarnizioni / Seals**  
omit (T range = -10°C + 80°C)  
V  
...

**Opzioni / Options**  
TR  
...

[\*] = campi da specificare se diversi dallo standard  
"tipo pompa" / to be specified if different from  
standard pump type

#### Tipi Pompa Standard / Pump Standard Types

omit = flangia europea + albero T0 + porte E + guarnizioni standard / european flange + shaft T0 + ports E + standard seal  
E = flangia E + albero CO + porte A + guarnizioni standard / flange E + shaft CO + ports A + standard seal  
A = flangia A + albero CO + porte A + guarnizioni standard / flange A + shaft CO + ports A + standard seal

#### Esempi / Examples:

ALP4-D-190 = rotazione destra, 128 cm<sup>3</sup>/giro, flangia europea, albero conico 1:8, porte flangiate tipo E, guarnizioni standard  
clockwise rotation, 128 cm<sup>3</sup>/rev, european flange, 1:8 tapered shaft, flanged ports E types, standard seals  
ALP4-D-190-S0 = rotazione destra, 128 cm<sup>3</sup>/giro, flangia europea, albero scanalato (S0), porte flangiate tipo E, guarnizioni standard  
clockwise rotation, 128 cm<sup>3</sup>/rev, european flange, 1:8 splined shaft (S0), flanged ports E types, standard seals  
ALP4A-D-190 = rotazione destra, 128 cm<sup>3</sup>/giro, flangia SAE C 6 fori, albero cilindrico, porte flangiate tipo A, guarnizioni standard  
clockwise rotation, 128 cm<sup>3</sup>/rev, SAE C 6 bolts flange, cylindrical shaft, flanged ports A types, standard seals

LE TAVOLE DI PRODOTTO RAPPRESENTANO I TIPI POMPA STANDARD PER MARZOCCHI POMPE. LE TAVOLE SINOTTICHE DI FLANGE, ALBERI E PORTE HANNO LO SCOPO DI RAPPRESENTARE TUTTE LE POSSIBILI CONFIGURAZIONI DI PRODOTTO. PER MAGGIORI DETTAGLI SULLE DISPONIBILITÀ E CONDIZIONI DI FORNITURA, CONSIGLIAMO DI INTERPELLARE IL NOSTRO UFFICIO TECNICO-COMMERCIALE.

THE PRODUCT DATA SHEETS SHOW OUR STANDARD MODEL TYPES. THE SYNOPTIC TABLES FOR FLANGES, SHAFTS AND PORTS SHOW ALL THE POSSIBLE CONFIGURATIONS. FOR FURTHER DETAILS ABOUT THE AVAILABILITY OF EACH CONFIGURATION PLEASE CONTACT OUR SALES AND TECHNICAL DEPT.

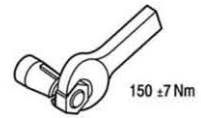
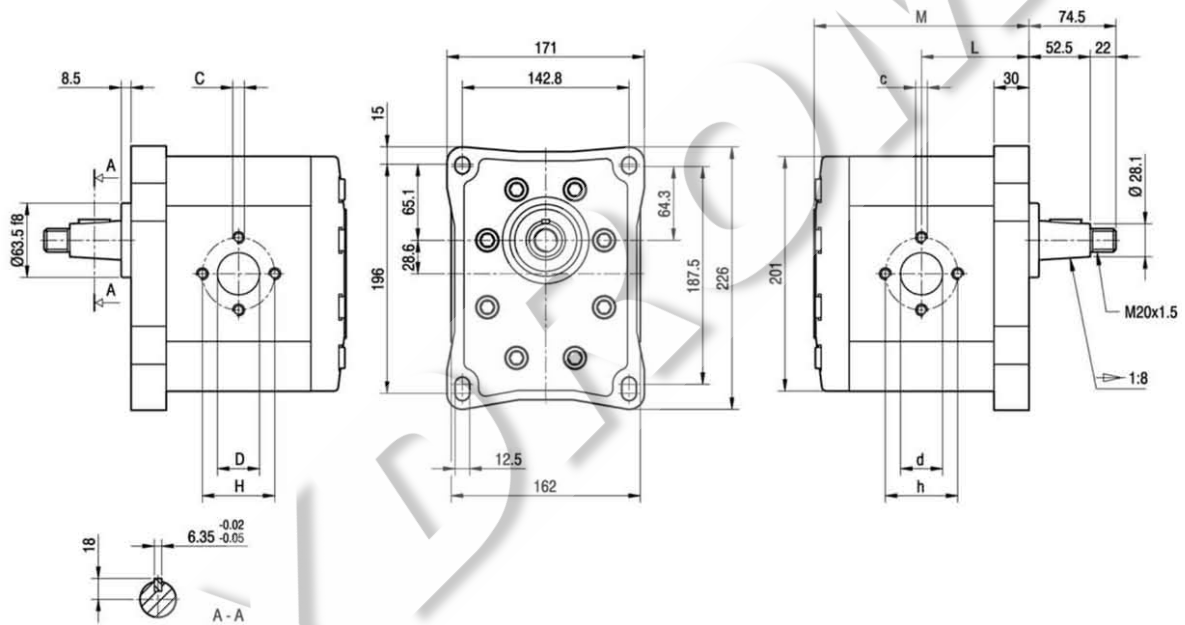
# ALP4

Parti accessorie a corredo della pompa standard: linguetta a disco (codice 522263), dado M20x1.5 (codice 523019), rosetta elastica spaccata (codice 523008).  
 Porte standard: filetti M10 e M12 profondità utile 21 mm.

Accessories supplied with the standard pump: woodruff key (code 522263), M20x1.5 exagonal nut (code 523019), washer (code 523008).  
 Standard ports: M10 and M12 threads depth 21 mm.

MANDATA  
OUTLET

ASPIRAZIONE  
INLET

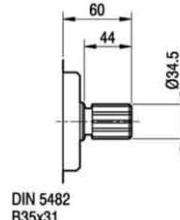
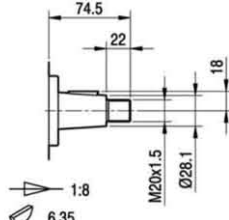
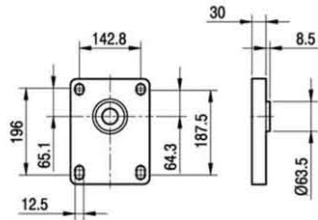


TIPO TYPE	CILINDRATA DISPLACEMENT	PORTATA a 1500 giri/min FLOW at 1500 rev/min	PRESSIONI MASSIME MAX PRESSURE			VELOCITÀ MASSIMA MAX SPEED	DIMENSIONI DIMENSIONS							
			P <sub>1</sub>	P <sub>2</sub>	P <sub>3</sub>		L	M	c	C	d	D	h	H
	cm <sup>3</sup> /giro (cm <sup>3</sup> /rev)	litri/min (litres/min)	bar	bar	bar	giri/min (rpm)	mm	mm	mm	mm	mm	mm	mm	mm
ALP4-D-130	87	124	240	260	280	2800	92	184	M10	M10	36	30	62	56
ALP4-D-160	106	151	200	220	240	2300	96	192	M10	M10	36	30	62	56
ALP4-D-190	128	182	180	200	220	2500	100,5	201	M12	M10	45	36	72,5	62
ALP4-D-220	147	209	170	190	210	2200	104,5	209	M12	M10	45	36	72,5	62
ALP4-D-250	166	237	160	170	190	2000	108,5	217	M12	M10	45	36	72,5	62
ALP4-D-270	181	258	140	150	170	2400	111,5	223	M12	M12	56	45	92	72,5
ALP4-D-300	200	285	130	140	150	2400	115,5	231	M12	M12	56	45	92	72,5

# ALP4

## FLANGE / FLANGES

## ALBERI / SHAFTS

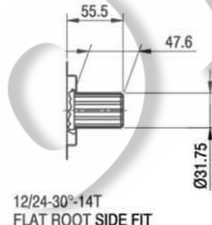
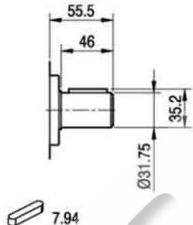
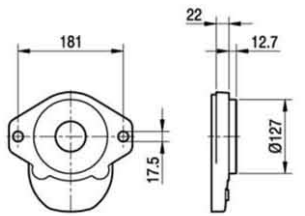


**T0**

Coppia Max  
Max Torque 550 Nm

**S0**

DIN 5482  
B35x31  
Coppia Max  
Max Torque 1500 Nm

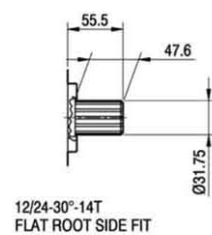
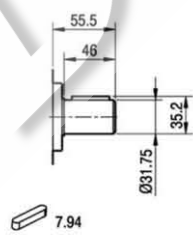
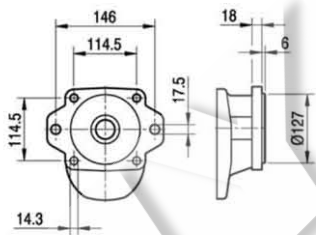


**C0**

Coppia Max  
Max Torque 450 Nm

**S1**

12/24-30°-14T  
FLAT ROOT SIDE FIT  
Coppia Max  
Max Torque 900 Nm



**C0**

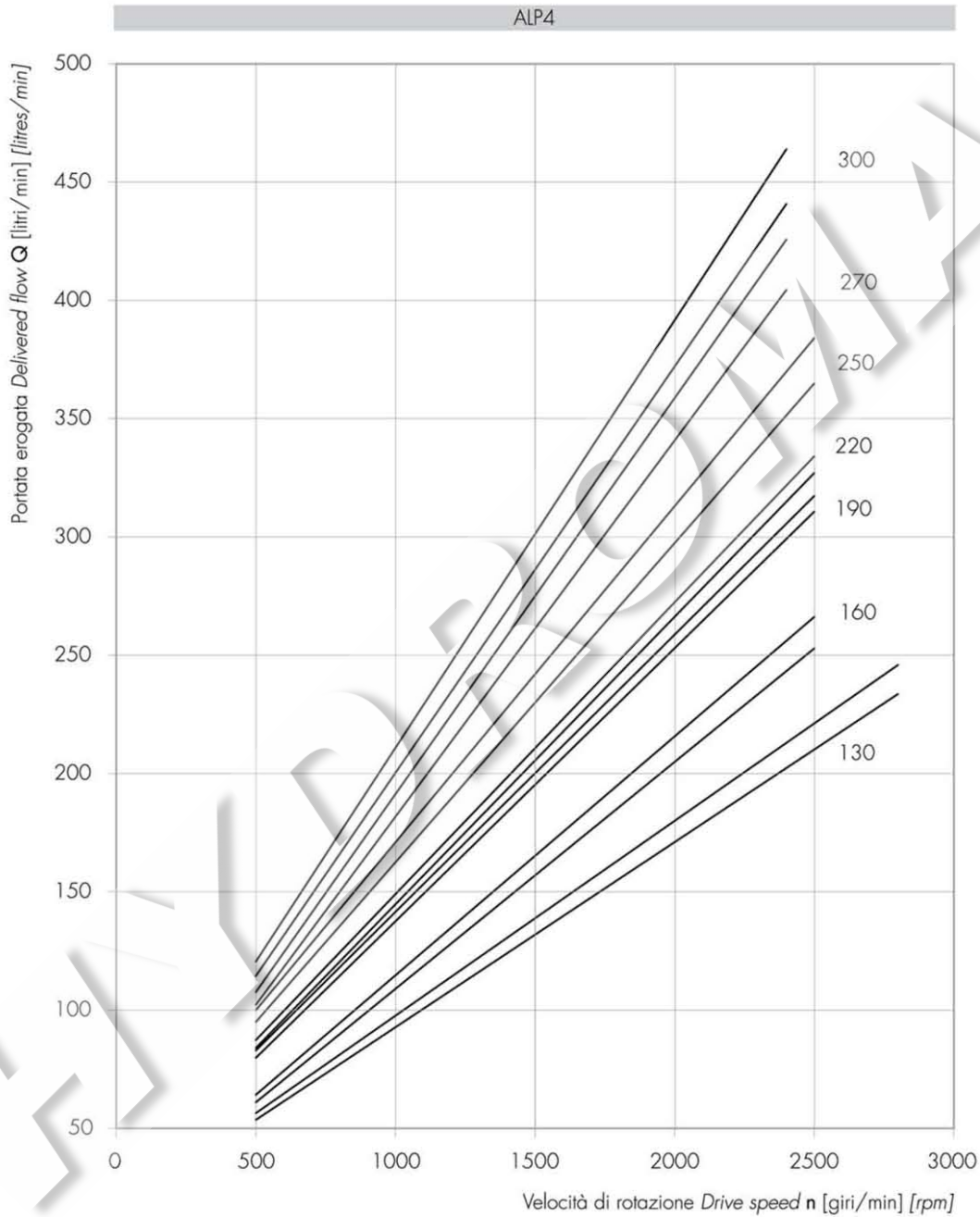
Coppia Max  
Max Torque 450 Nm

**S1**

12/24-30°-14T  
FLAT ROOT SIDE FIT  
Coppia Max  
Max Torque 900 Nm

# ALP4 CURVE CARATTERISTICHE

# ALP4 PERFORMANCE CURVES



Le curve sono state ottenute alla temperatura di 50°C, utilizzando olio con viscosità 30 cSt alle pressioni sotto riportate.

Each curve has been obtained at 50°C, using oil with viscosity 30 cSt at these pressure.

130 | 50-240 bar

190 | 50-180 bar  
220 | 50-180 bar

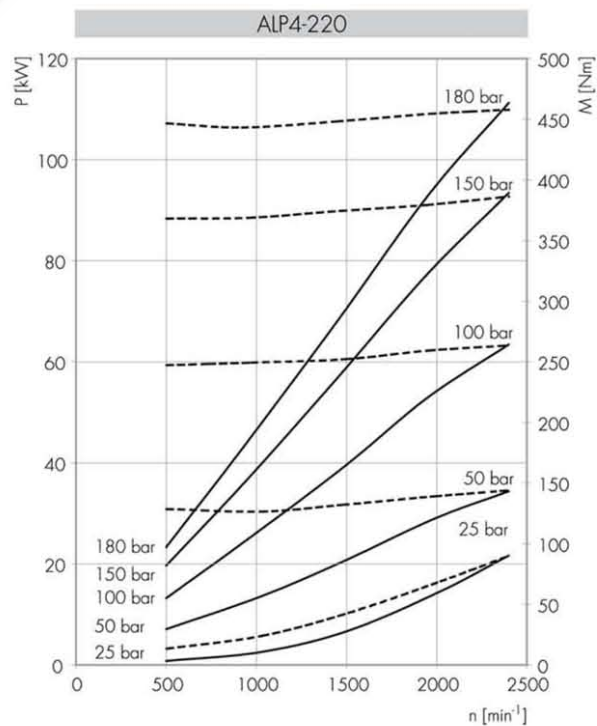
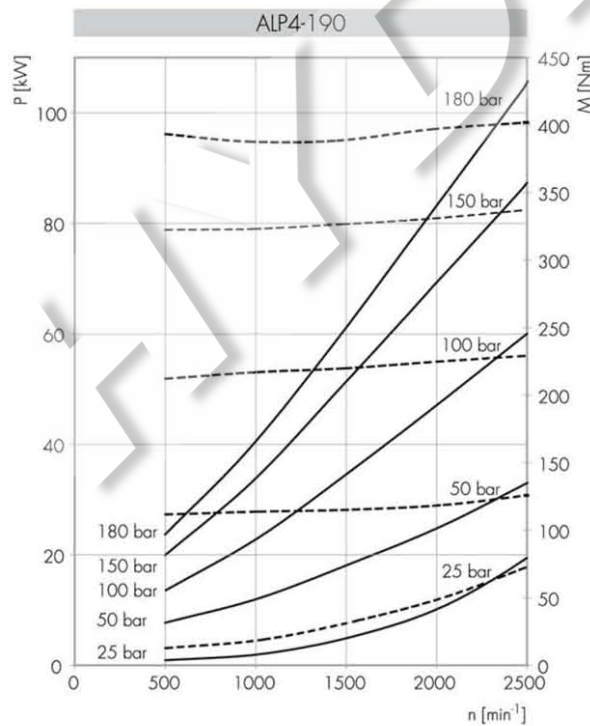
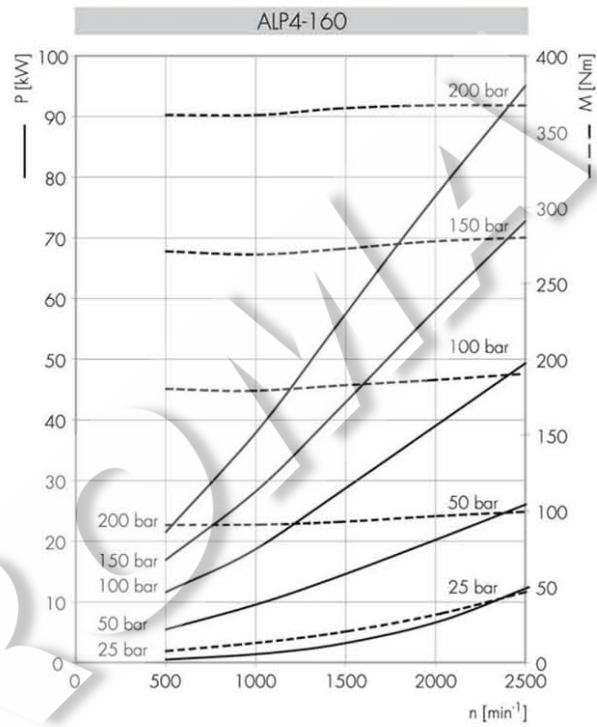
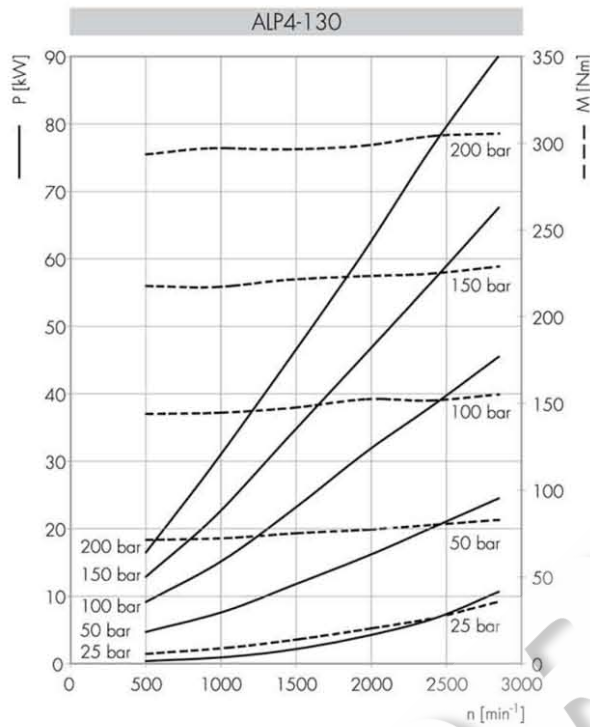
270 | 50-150 bar

160 | 50-220 bar

250 | 50-170 bar

300 | 50-130 bar

Potenza assorbita Absorbed power  $P$  [kW]  
 Momento torcente assorbito Absorbed torque  $M$  [Nm]  
 Velocità di rotazione Drive speed  $n$  [giri/min] [rpm]



Potenza assorbita Absorbed power  $P$  [kW]  
 Momento torcente assorbito Absorbed torque  $M$  [Nm]  
 Velocità di rotazione Drive speed  $n$  [giri/min] [rpm]

