

Part number:

HYDROMA

HYDRAULICKÉ SYSTÉMY

**HIDROMA
SYSTEMS**

UKŁADY HYDRAULICZNE

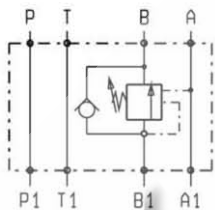
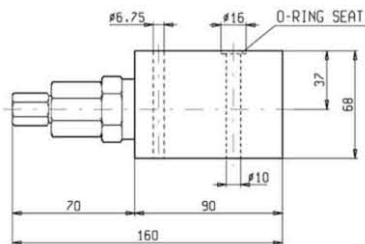
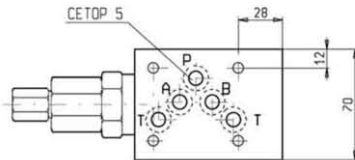
HYDROMA

ГИДРАВЛИЧЕСКИЕ СИСТЕМЫ

**SANDWICH VALVES
SINGLE OVERCENTRE MODULES**

EM-VBSOSEC150-CETOP 5

OP.20.02.03.43 - Z



DESCRIPTION - OPERATION

These modules contain one single overcentre valve type VBSO-SEC-150 (see Oil Control catalog) and can be sandwich-mounted on CETOP 5 (size 10) flanges.

FEATURES - RATINGS

Maximum Operating Pressure 250 bar
Rated Flow 80 l/min

- Weight : 1.480 Kg
- Fluids - Temperatures - Testing Conditions - Seals : see page 7.01.04
- Internal Leakage : see page 7.01.04
- Filtration : 25 µm nominal or better, see page 7.01.05
- Manifolds in high-strength aluminum TA-7020 for working pressures up to 250 bar.
- Special steel manifolds can be supplied upon request for working pressures up to 350 bar and for fatigue cycle applications with any working pressure.
- **IMPORTANT** : All products shown in this page are not available from stock and not included in our standard price list. Please contact our Sales Department for any information.

Z	SPRINGS				
	Adj. press. Range bar	Press. Increase bar / turn	Std. Setting bar (Q=5 l/min)	Ordering code	Colour
20	60-210	66	200	03.51.01.152	green
35	100-350	104	350	03.51.01.142	yellow

PRESSURE DROP

