

Part number:

**006-10529**

**HYDROMA**

HYDRAULICKÉ SYSTÉMY

**HIDROMA  
SYSTEMS**

UKŁADY HYDRAULICZNE

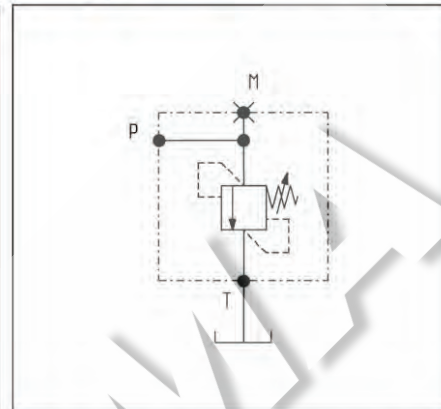
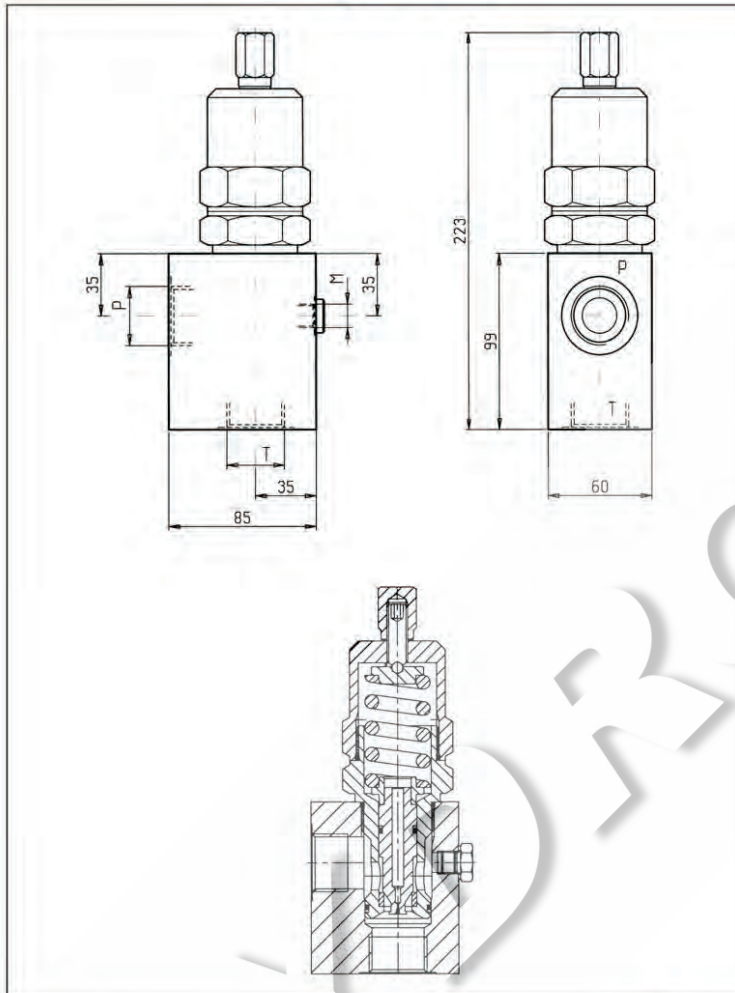
**HYDROMA**

ГИДРАВЛИЧЕСКИЕ СИСТЕМЫ

**MASSIMA PRESSIONE, DIRETTE, OTTURATORE DIFFERENZIALE  
DIRECT, DIFFERENTIAL PISTON RELIEF**

**VSDC-350**

**05.12.04 - X - Y - Z**

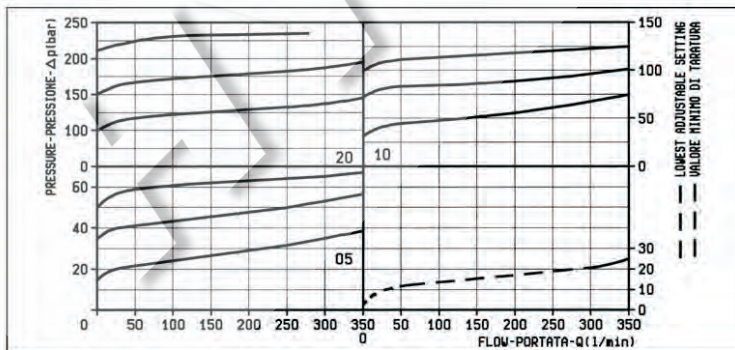


**DATI TECNICI / TECHNICAL DATA**


Pressione di lavoro max. 210 bar  
Max. working pressure

Portata max. 350 l/min  
Flow max.

Peso kg 2.6  
Weight



**X REGOLAZIONI  
ADJUSTMENTS**

**03** vite interna esagono incassato leakproof inner hex. socket screw 

**MOLLE / SPRINGS**

Z	Campo taratura min - max bar Adj. press. range bar	Incremento press. bar / giro vite Press. increase bar / turn	Taratura standard bar (Q = 5 l/min) Std. setting bar (made at 5 l/min)	Cod. ordinazione Ordering code	Colore Colour
05	15-50	9	50	03.51.01.065	nero black
10	35-100	18	100	03.51.01.064	blu blue
20	80-210	37	200	03.51.01.044	verde green

**Y ATTACCHI / PORT SIZE**

Y	ATTACCHI / PORT SIZE	
	P-T	M
05	G 1	G 1/4
06	G 1 1/4	G 1/4