

Part number:

HYDROMA

HYDRAULICKÉ SYSTÉMY

**HIDROMA
SYSTEMS**

UKŁADY HYDRAULICZNE

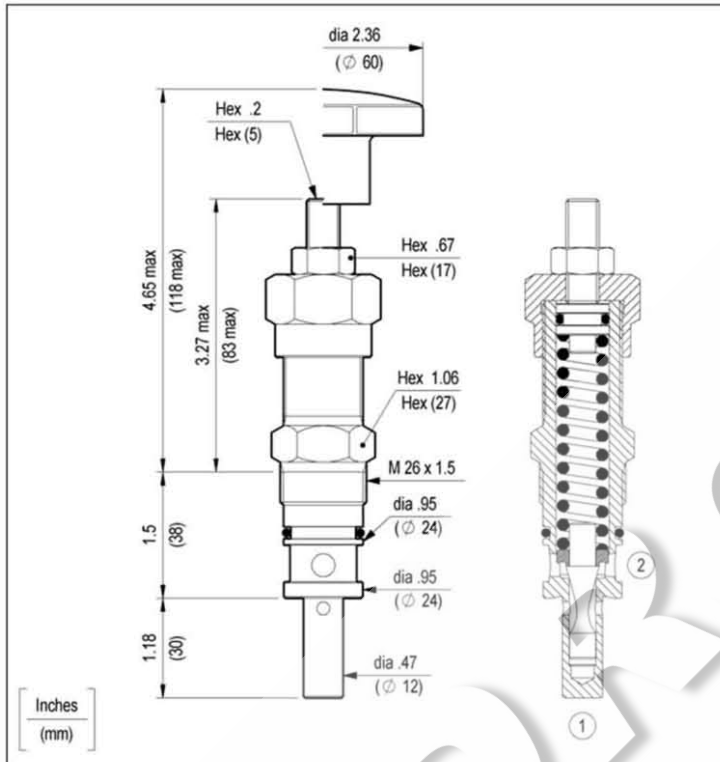
HYDROMA

ГИДРАВЛИЧЕСКИЕ СИСТЕМЫ

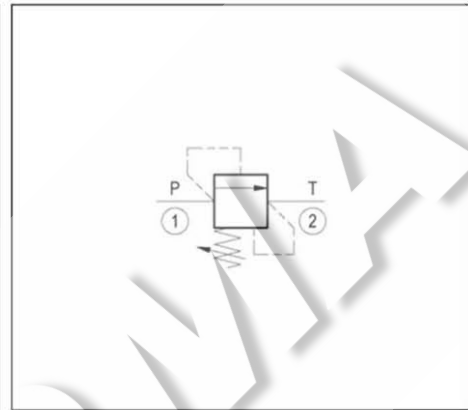
**RELIEF, DIRECT ACTING GUIDED POPPET TYPE
SPECIAL CAVITY**

VS-80

04.11.05 - X - 99 - Z

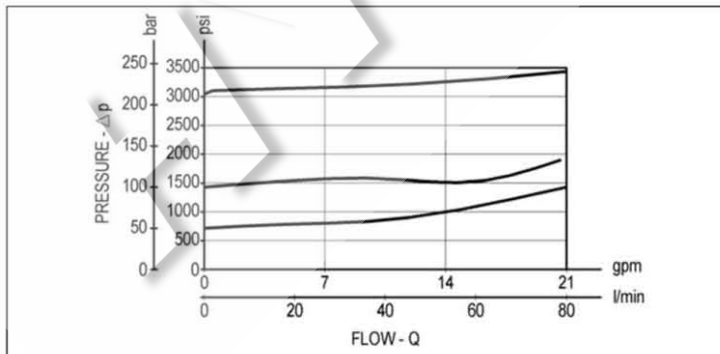


Flow is blocked from 1 to 2 until pressure increases to meet the selected valve setting, lifting the poppet from its seat and allowing relief flow through 2 to tank. Pressure at 2 is additive to the relief setting of the valve. The unique Oil Control poppet design provides enhanced stability at all flows and pressures.



TECHNICAL DATA

Max. pressure:	3600 psi	(250 bar)
Max. flow:	21 gpm	(80 l/min)
Special cavity :	009 (see page CT.S.001.U)	
Installation torque :	61-68 ft-lb	(83-92 Nm)
Weight:	0.772 lbs	(0.350 Kg)



X	ADJUSTMENTS	
03	Leakproof hex. socket screw	
04	Handknob and locknut	

Z	SPRINGS		
	Adj. press. range psi (bar)	Press. increase psi / turn (bar/turn)	Standard setting psi (bar) (Q=5 l/min)
05	75-725 (5-50)	87 (6)	725 (50)
10	435-1450 (30-100)	174 (12)	1450 (100)
20	1160-3600 (80-250)	392 (27)	2900 (200)

OPTIONS	
Ordering code	Description
03.05.01.003	Sealing cap
11.04.23.003	Tamper resistant cap

Special settings available. Contact factory authorized representative for ordering code.