

Part number:

006-10587

HYDROMA

HYDRAULICKÉ SYSTÉMY

**HIDROMA
SISTEMS**

UKŁADY HYDRAULICZNE

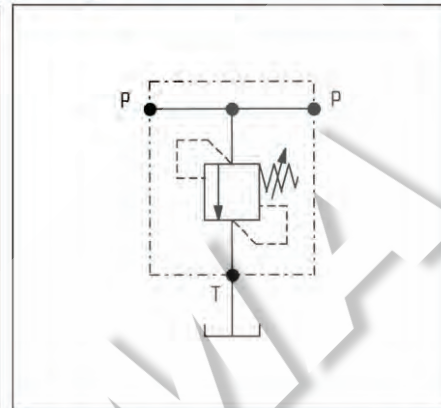
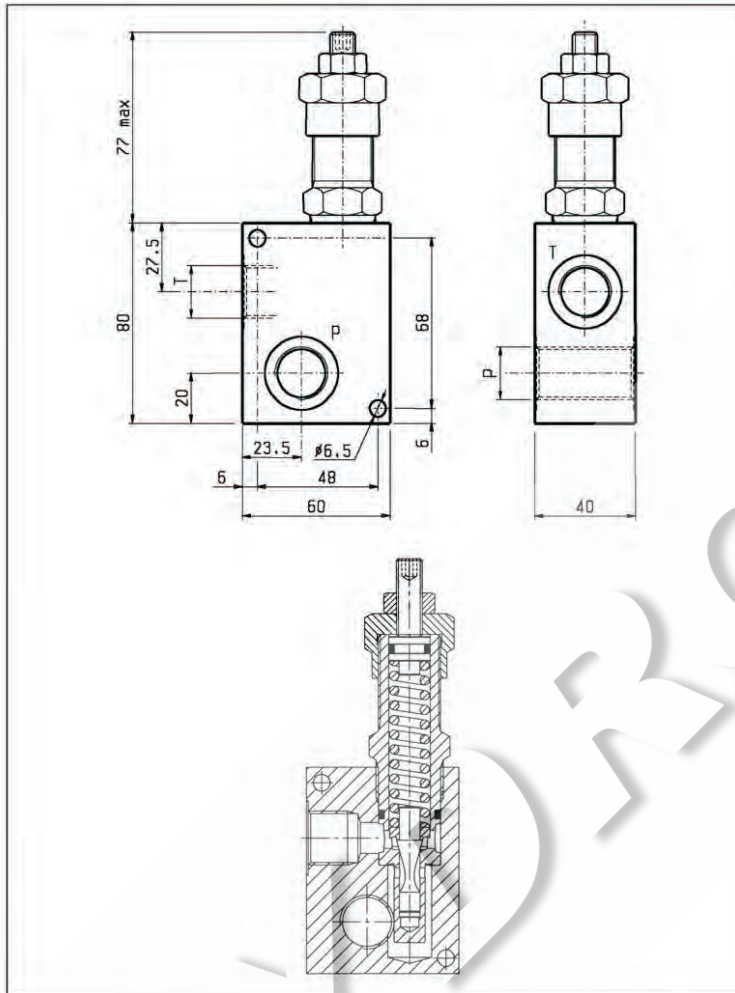
HYDROMA

ГИДРАВЛИЧЕСКИЕ СИСТЕМЫ

**MASSIMA PRESSIONE, DIRETTE, OTTURATORE CONICO
DIRECT, POPPET TYPE RELIEF**

VSC-80

05.13.02 - X - Y - Z

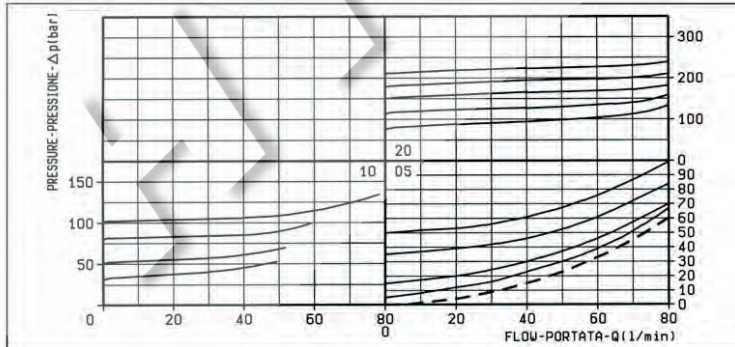


DATI TECNICI / TECHNICAL DATA

Pressione di lavoro max. 250 bar
Max. working pressure

Portata max. 80 l/min
Flow max.

Peso 0.75 kg
Weight



| X | REGOLAZIONI ADJUSTMENTS | |
|----|--|--|
| 03 | vite esterna esagono incassato leakproof hex. socket screw | |
| 04 | volantino e dado handknob and locknut | |
| | cappello per piombatura sealing cap codice / ordering code 03.05.01.001 | |

| MOLLE / SPRINGS | | | | | |
|-----------------|---|---|---|-----------------------------------|------------------|
| Z | Campo taratura min - max bar Adj. press. range bar | Incremento press. bar / giro vite Press. increase bar / turn | Taratura standard bar (Q = 5 l/min) Std. setting bar (Q = 5 l/min) | Cod. ordinazione Ordering code | Colore Colour |
| 05 | 5-50 | 6 | 50 | 03.51.01.020 | nero black |
| 10 | 35-100 | 12 | 100 | 03.51.01.001 | blu blue |
| 20 | 80-250 | 27 | 200 | 03.51.01.010 | rosso red |

| Y | | ATTACCHI / PORT SIZE |
|----|-------|----------------------|
| | | P - T |
| 03 | G 1/2 | |
| 04 | G 3/4 | |
| | | |
| | | |