

Part number:

**HYDROMA**

HYDRAULICKÉ SYSTÉMY

**HIDROMA  
SYSTEMS**

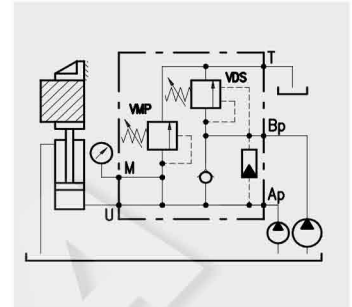
UKŁADY HYDRAULICZNE

**HYDROMA**

ГИДРАВЛИЧЕСКИЕ СИСТЕМЫ

**HIGH/LOW PRESSURE  
CUT-OUT VALVES****Type VEP****Operation**

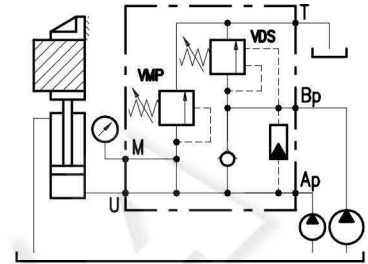
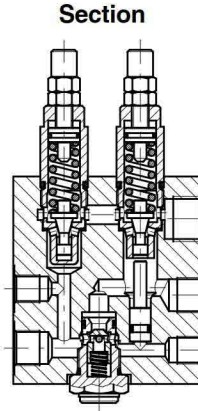
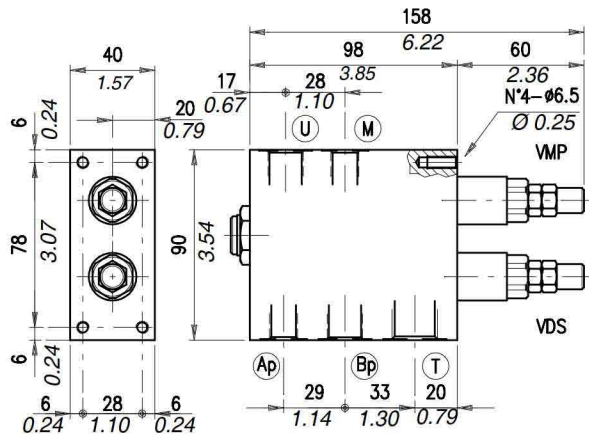
Recommended for systems powered by two pumps where double speed (fast-slow sequence) is made available. Fast speed is obtained by summing up both pumps capacity up to the setting value of the VDS valve. Slow speed according to the small pump is obtained by later discharge of the bigger pump. Working pressure during slow speed is controlled by the VMP valve.

**Performance****Body Valves**

Type VEP	Maximum flow			Maximum pressure		Application range with standard springs "Ap" (VMP) *	Application range with standard springs "Bp" (VDS)	Weight				
	line	l/min	US gpm	bar	psi			kg	lb			
VEP 38	Ap line	10	2.6	250 aluminium body	3600 alum. body	50÷220 bar - 72.5÷3200 psi (test setting 180 bar - 2600 psi 5 l/min. - 1.32 US gpm)	5÷40 bar - 72.5÷580 psi (test setting 30 bar - 435 psi at 5 l/min. - 1.32 US gpm)	1,20	2.64			
	Bp line	25	6.6				20÷80 bar - 290÷1150 psi (test setting 60 bar - 870 psi at 5 l/min. - 1.32 US gpm)	2,63	5.80			
U line	30	8										
VEP 12	Ap line	20	5.3				350 steel body	5100 steel body	180÷350 bar - 2600÷5100 psi (test setting 280 bar - 4050 psi 5 l/min. - 1.32 US gpm)	5÷80 bar - 72.5÷1150 psi (test setting 40 bar - 580 psi at 5 l/min. - 1.32 US gpm)	2,05	4.52
	Bp line	45	12									
	U line	55	14.5									
VEP 34	Ap line	30	8				250 aluminium body	3600 alum. body	50÷220 bar - 72.5÷3200 psi (test setting 180 bar - 2600 psi 5 l/min. - 1.32 US gpm)	10÷50 bar - 145÷725 psi (test setting 30 bar - 435 psi at 5 l/min. - 1.32 US gpm)	3,77	8.31
	Bp line	80	21							10÷80 bar - 145÷1150 psi (test setting 50 bar - 725 psi at 5 l/min. - 1.32 US gpm)	9,37	20.66
	U line	100	26							50÷110 bar - 725÷1600 psi (test setting 80 bar - 1150 psi at 5 l/min. - 1.32 US gpm)		
VEP 100	Ap line	50	13				350 steel body	5100 steel body	180÷350 bar - 2600÷5100 psi (test setting 280 bar - 4050 psi 5 l/min. - 1.32 US gpm)	5÷40 bar - 72.5÷580 psi (test setting 30 bar - 435 psi at 5 l/min. - 1.32 US gpm)	5,85	12.90
	Bp line	150	40	20÷80 bar - 290÷1150 psi (test setting 60 bar - 870 psi at 5 l/min. - 1.32 US gpm)	13,50	29.76						
VEP 114	U line	180	48	250 aluminium body	3600 alum. body	50÷220 bar - 72.5÷3200 psi (test setting 180 bar - 2600 psi 5 l/min. - 1.32 US gpm)						
	Ap line	80	2				50÷220 bar - 725÷3200 psi (test setting 160 bar - 2300 psi at 5 l/min. - 1.32 US gpm)	8,40	18.52			
VEP 114	Bp line	200	53	350 steel body	5100 steel body	180÷350 bar - 2600÷5100 psi (test setting 280 bar - 4050 psi 5 l/min. - 1.32 US gpm)						
	U line	250	66									

\*To perform setting of the valve see the pressure drop/flow diagram.

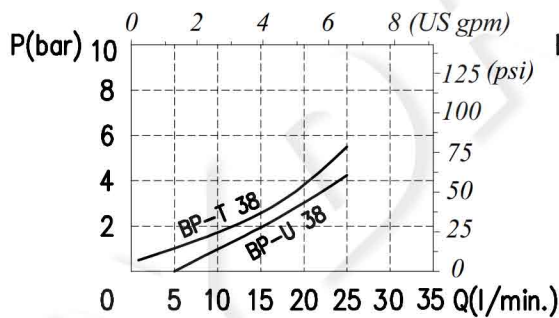
## Dimensions and hydraulic circuit



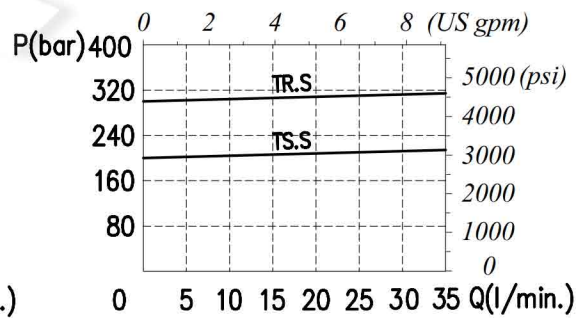
VEP	U	M	T	Ap	Bp
38	G 3/8	G 1/4	G 1/2	G 1/4	G 3/8

## Rating diagrams

Pressure drop diagram

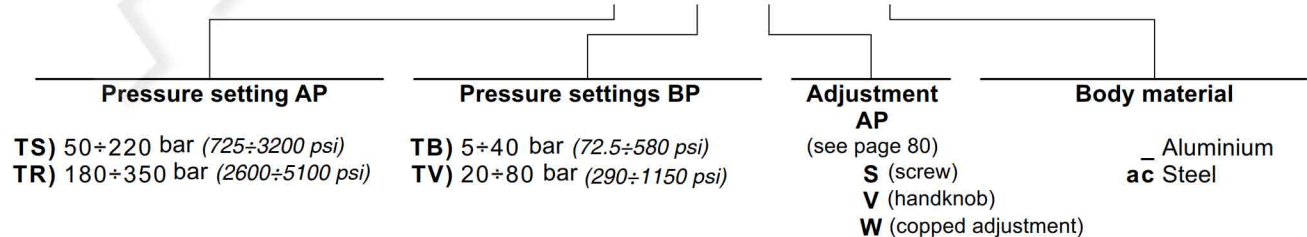


Adjustment diagram

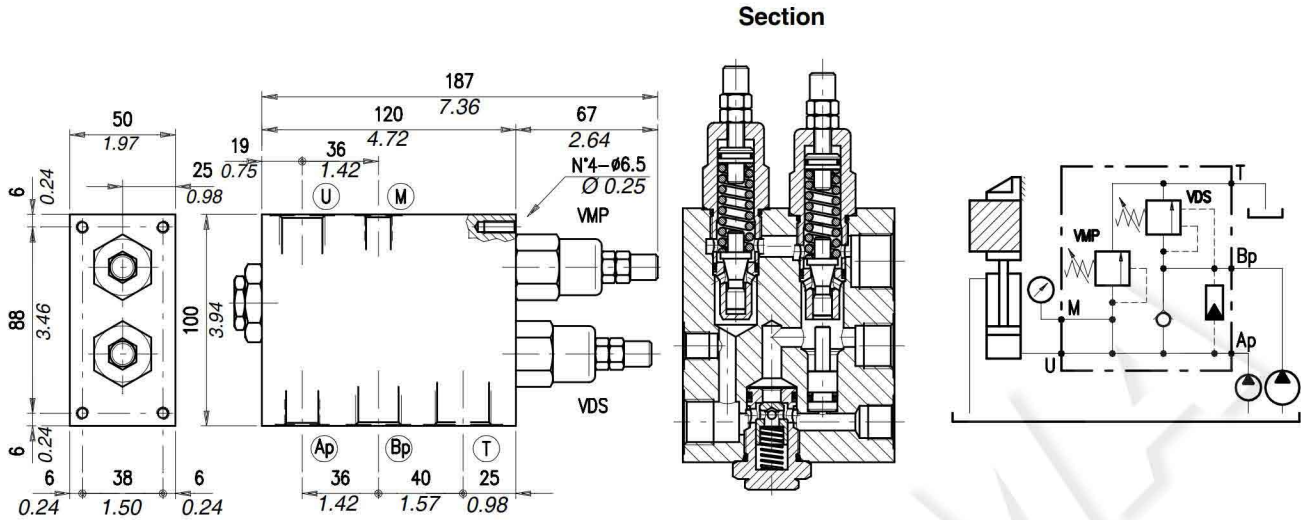


## Order code

VEP 38 / □□ - □□ . □ - S / □□

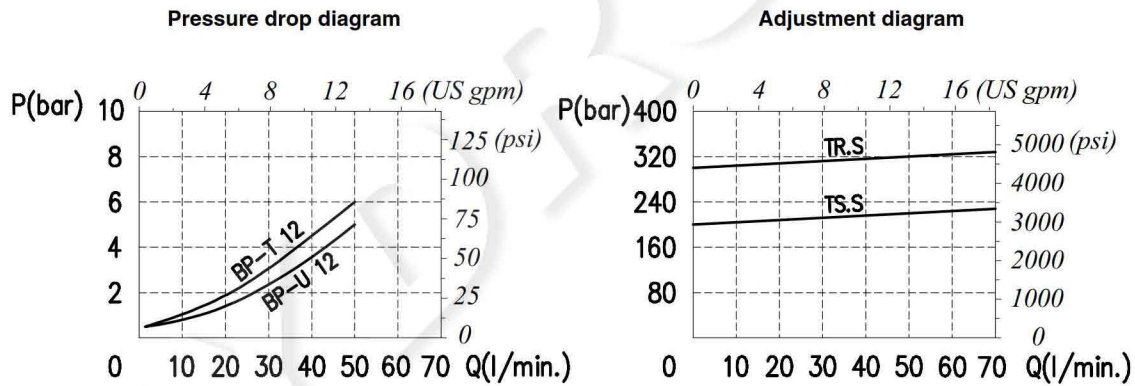


**Dimensions and hydraulic circuit**



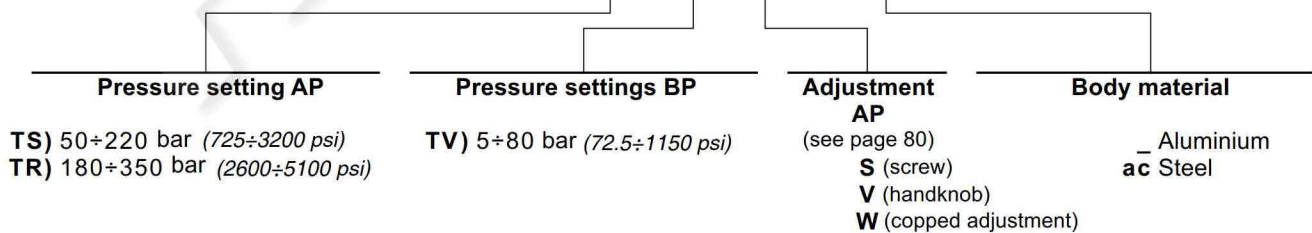
VEP	U	M	T	Ap	Bp
12	G 1/2	G 1/4	G 3/4	G 3/8	G 1/2

**Rating diagrams**

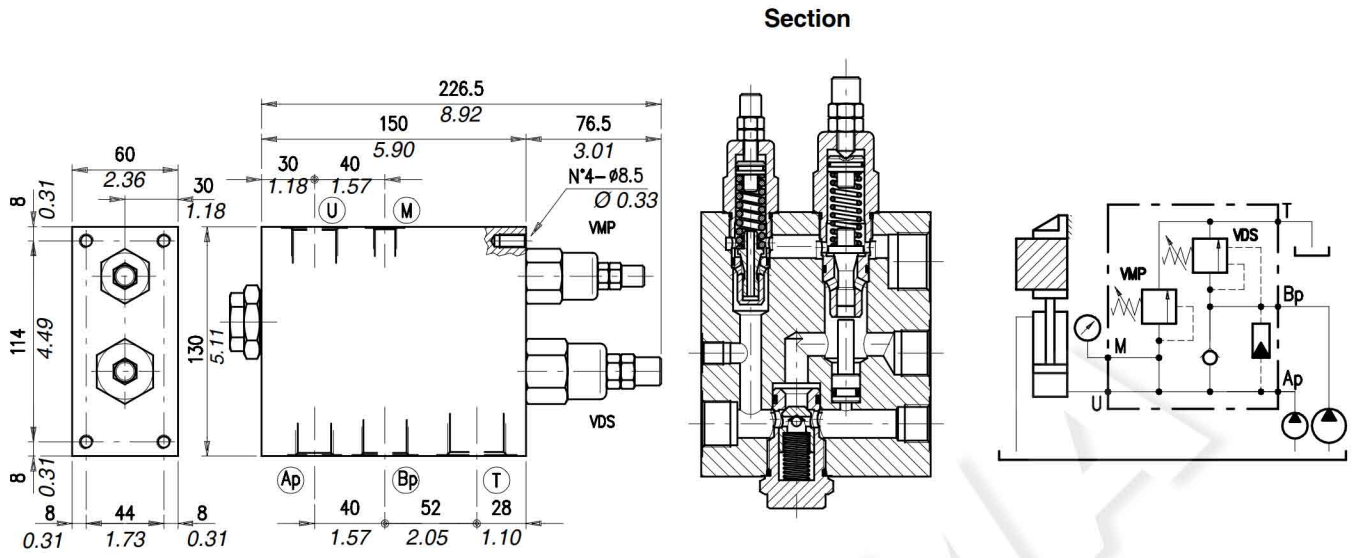


**Order code**

**VEP 12 / □□ - □□ . □ - S / □□**

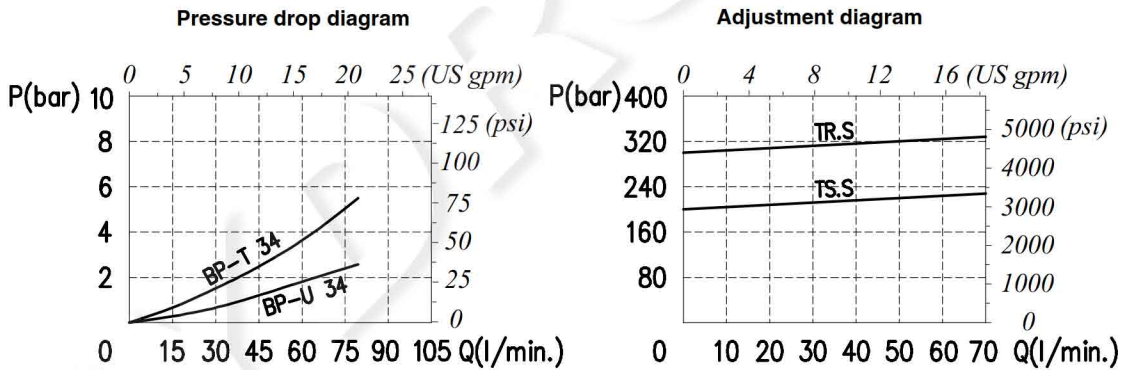


## Dimensions and hydraulic circuit



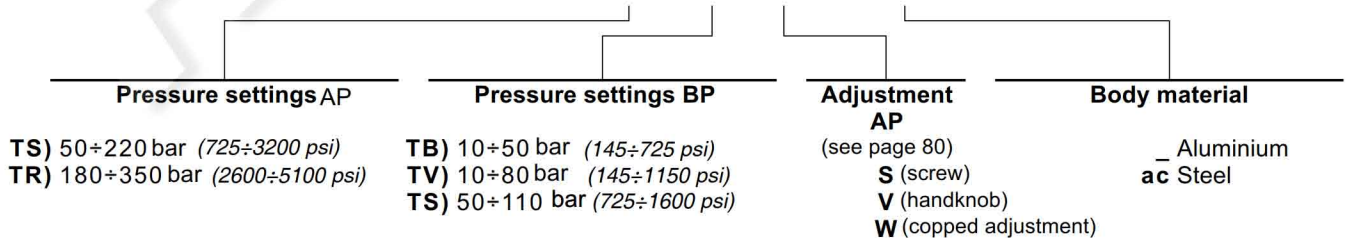
VEP	U	M	T	Ap	Bp
34	G 3/4	G 1/4	G 1"	G 1/2	G 3/4

## Rating diagrams

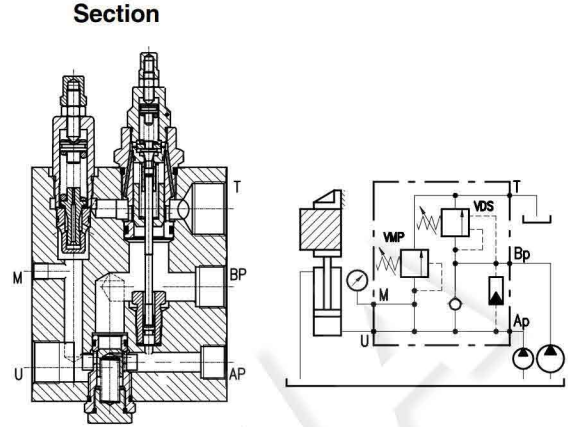
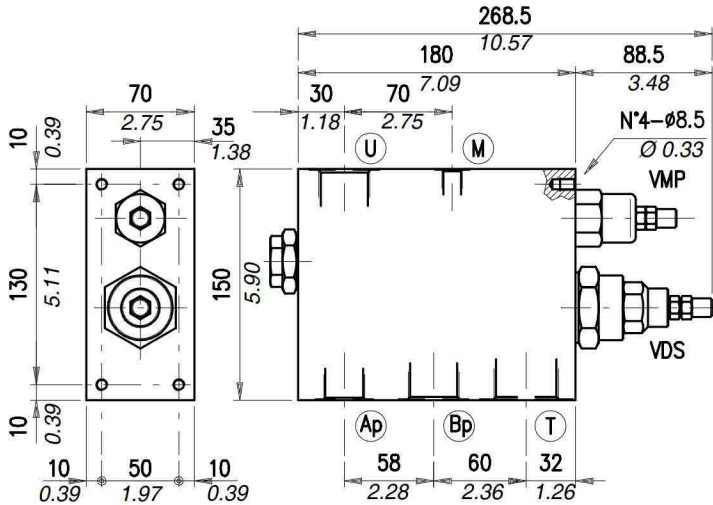


## Order code

VEP 34 / □□ - □□ . □ - S / □□



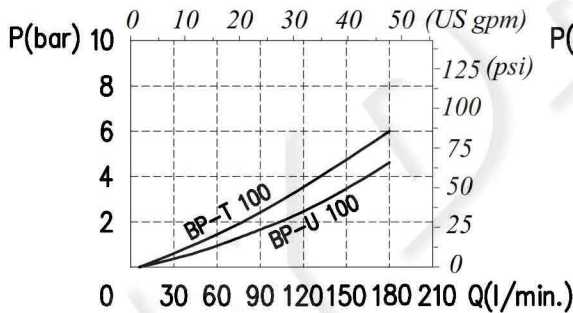
**Dimensions and hydraulic circuit**



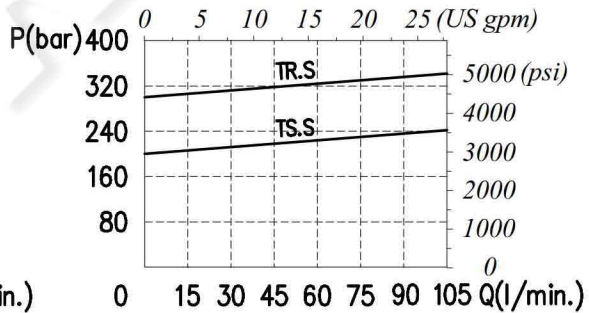
VEP	U	M	T	Ap	Bp
100	G 1"	G 1/4	G1" 1/4	G 3/4	G 1"

**Rating diagrams**

Pressure drop diagram



Adjustment diagram



**Order code**

**VEP 100 / □□ - □□ . □ - S / □□**

**Pressure settings AP**

**Pressure settings BP**

**Adjustment**

**Body material**

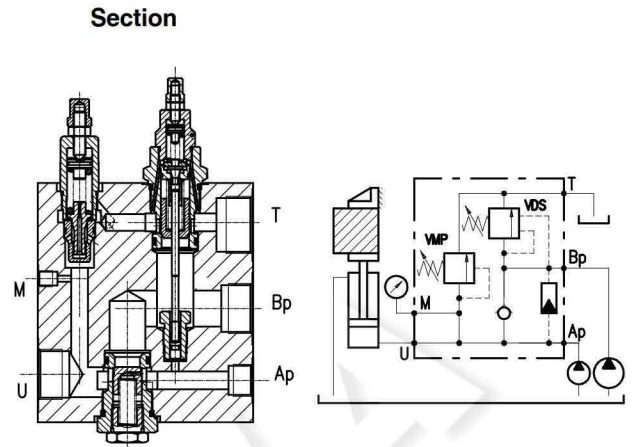
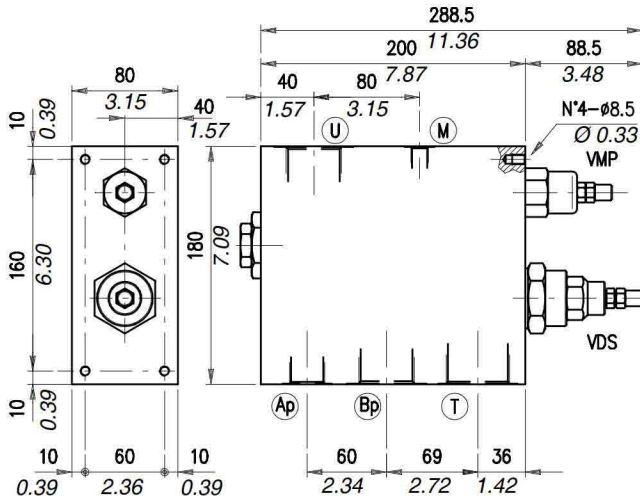
**TS** 50÷220 bar (725÷3200 psi)  
**TR** 180÷350 bar (2600÷5100 psi)

**TB** 5÷40 bar (72.5÷580 psi)  
**TV** 20÷80 bar (290÷1150 psi)  
**TS** 50÷220 bar (725÷3200 psi)

**AP**  
 (see page 80)  
**S** (screw)  
**V** (handknob)  
**W** (copped adjustment)

**\_** Aluminium  
**ac** Steel

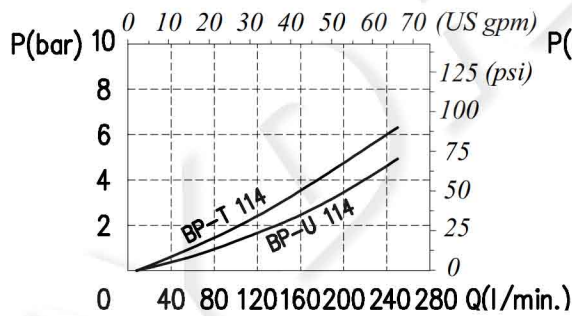
## Dimensions and hydraulic circuit



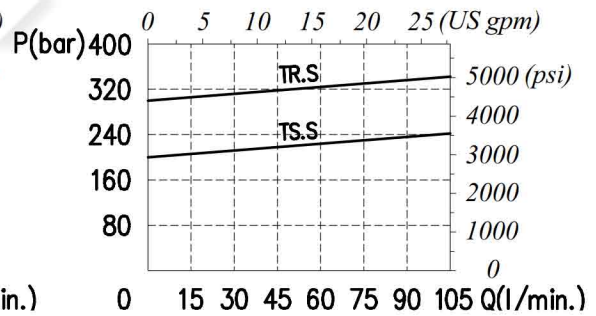
VEP	U	M	T	Ap	Bp
114	G 1" 1/4	G 1/4	G 1" 1/2	G 3/4	G 1" 1/4

## Rating diagrams

Pressure drop diagram



Adjustment diagram



## Order code

VEP 114 / □□ - □□ . □ - S / □□

