

Part number:

HYDROMA

HYDRAULICKÉ SYSTÉMY

**HIDROMA
SYSTEMS**

UKŁADY HYDRAULICZNE

HYDROMA

ГИДРАВЛИЧЕСКИЕ СИСТЕМЫ

Pilot operated check,
pilot to open
Common cavity, Size 08

VSOA-08A

04.33.10 - X - 56 - Z

RE 18319-34

Edition: 09.2019

Replaces: 04.2019



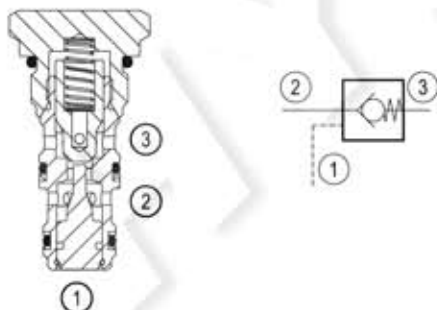
Technical data

Max. operating pressure	350 bar (5000 psi)
Max. flow	30 l/min. (8 gpm)
Pilot ratio	3.2:1
Max. internal leakage	5 drops/min.
Fluid temperature range	-30 to 100 °C (-22 to 212 °F)
Installation torque	40 - 45 Nm (29 - 33 ft-lbs)
Weight	0.08 kg (0.18 lbs)
Cavity	CA-08A-3N (see data sheet 18325-70)
Lines bodies and standard assemblies	Please refer to section "Hydraulic integrated circuit" or consult factory
Seal kit ¹⁾	Code: RG08A3010530100 material no: R901101723
Fluids	Mineral-based or synthetics with lubricating properties at viscosities of 5 to 800 mm ² /s (cSt)
Recommended degree of fluid contamination	Nominal value max. 10µm (NAS 8) / ISO 4406 19/17/14
Installation position	No restrictions
Other Technical Data	See data sheet 18350-50

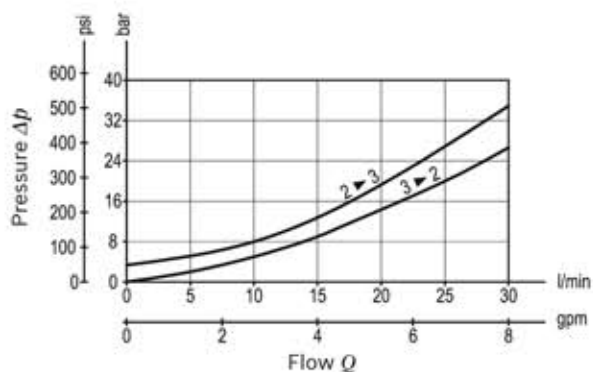
Description

When pressure at 2 rises above the spring bias pressure, the poppet is pushed from its seat and flow is allowed from 2 to 3. The valve is normally closed (checked) from 3 to 2. When sufficient pilot pressure is present at port 1, the pilot piston acts to push the poppet from its seat and flow is allowed from 3 to 2. Precision machining and hardening processes allow virtually leak-free performance in the checked condition. In case of valve application in redundancy systems it is especially recommended to use version with sealed pilot piston.

1) Only external seals for 10 valves



Characteristic curve



Ordering code

04.33.10	X	56	Z	00	*
----------	---	----	---	----	---

Series O/A to L
unchanged performances and dimensions

Pilot operated check, pilot to open

Version and options standard

O-Ring on pilot piston

00 No O-Ring

10 With O-Ring (available only for Z=05)

SPRINGS	
Cracking pressure bar (psi)	
00	1 (15)
05	5 (73)

56 Common cavity, Size 08

Preferred types

Type	Material number
043310005600000	R930000836
043310005605000	R930000846
043310105605000	R930000847

Type	Material number

Dimensions

