

Part number:

HYDROMA

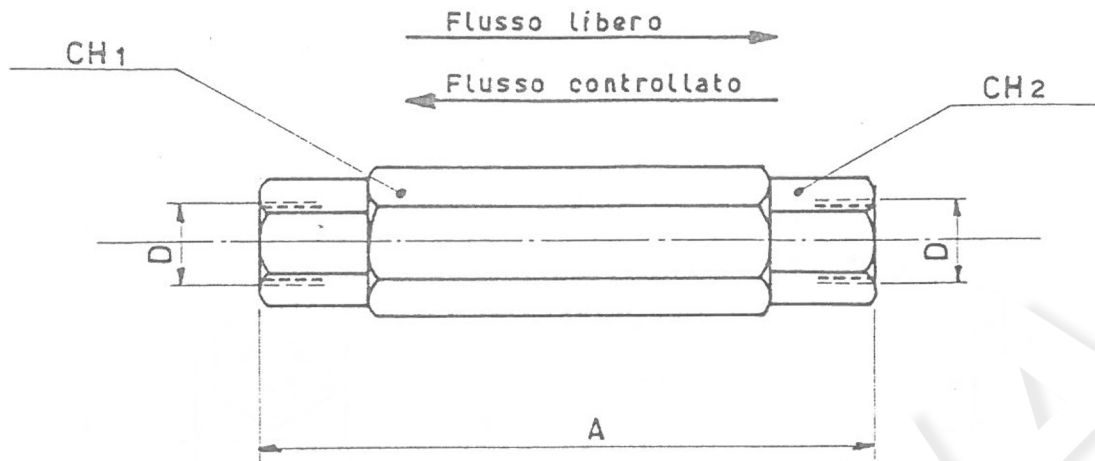
HYDRAULICKÉ SYSTÉMY

**HIDROMA
SYSTEMS**

UKŁADY HYDRAULICZNE

HYDROMA

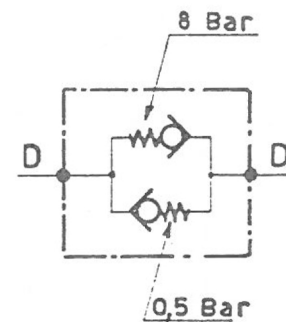
ГИДРАВЛИЧЕСКИЕ СИСТЕМЫ



MATERIALE : Acciaio

Press. max. 350 Bar

TIPO	D	A	CH1	CH2	Press. apertura (Bar)		Press. max. esercizio (Bar)	Port. nomin. (L/min)
					flusso libero	flusso contr.		
VBD $\frac{3}{8}$	$\frac{3}{8}$ G	102	30	27	0,5	8	350	25
VBD $\frac{1}{2}$	$\frac{1}{2}$ G	129	30	27	0,5	8	350	40
VBD $\frac{3}{4}$	$\frac{3}{4}$ G	141	46	41	0,5	8	300	70



Pressioni di apertura speciali : a richiesta