

Part number:

HYDROMA

HYDRAULICKÉ SYSTÉMY

**HIDROMA
SISTEMS**

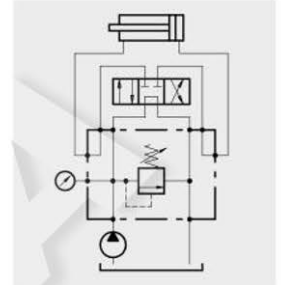
UKŁADY HYDRAULICZNE

HYDROMA

ГИДРАВЛИЧЕСКИЕ СИСТЕМЫ

**BASIC BLOCKS WITH CONICAL PRESSURE
RELIEF VALVE, DIRECT ACTING****Type PBL****Operation**

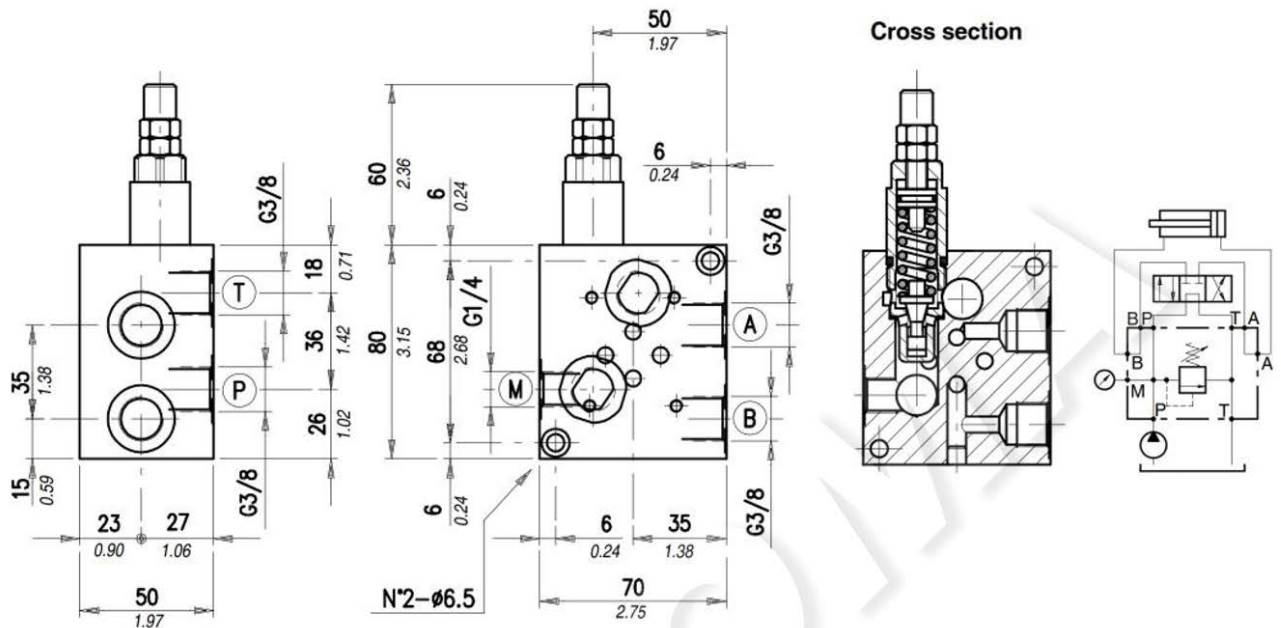
The valve allows oil flow from P to T when pressure in P reaches the setting of the spring. "PBL" are normally used as pressure relief valves for modular systems.

**Performance****Body Valves**

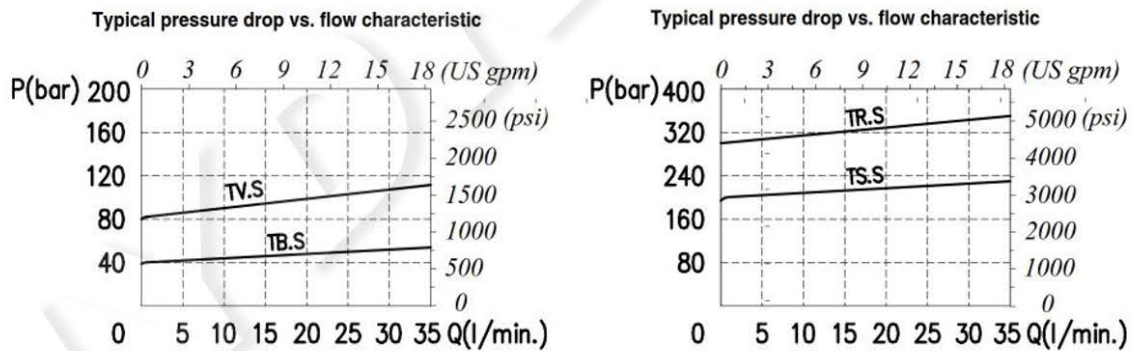
Tipo PBL	Max. flow		Max. pres.		Application range with standard spring*	Hysteresis	Oil leaks from P to T	Weight		Cartridge
	l/min	US gpm	bar	psi				kg	lb	
PBL6/VMP 38	35	9.2	alum. body 210 steel body 350	alum. body 3050 steel body 5100	5÷40 bar - 14.5÷580 psi (test setting 30 bar - 435 psi) at 5 l/min. - 1.32 US gpm) 20÷80 bar - 290÷1150 psi (test setting 60 bar - 870 psi) at 5 l/min. - 1.32 US gpm) 50÷220 bar - 725÷3200 psi (test setting 160 bar - 2300 psi) at 5 l/min. - 1.32 US gpm) 180÷350 bar - 2600÷5100 psi (test setting 250 bar - 3600 psi) at 5 l/min. - 1.32 US gpm)	85% of the setting value for flow capacity 1 l/min. - 0.26 US gpm-	disregardable	alum. body 0,80	alum. body 1.76	VMP 5
PBL6/VMP 5Y-38					5÷80 bar 14.5÷1150 psi (test setting 60 bar - 870 psi) at 5 l/min. - 1.32 US gpm) 40÷150 bar - 580÷2200 psi (test setting 120 bar - 1750 psi) at 5 l/min. - 1.32 US gpm) 140÷190 bar - 2050÷2750 psi (test setting 150 bar - 2200 psi) at 5 l/min. - 1.32 US gpm) 180÷350 bar - 2600÷5100 psi (test setting 250 bar - 3600 psi) at 5 l/min. - 1.32 US gpm)			steel body 1,98	steel body 4.36	VMP 5Y
PBL10/VMP 12					60			16	see setting PBL6/VMP 38	alum. body 1,70
								steel body 4,29	steel body 9.46	

*To perform setting of the valve see the pressure drop/ flow diagram.

Dimensions and hydraulic circuit



Rating diagrams



Order code

PBL6 /VMP38 /5 / □□ . □ / □□

