

Part number:

006-10523

HYDROMA

HYDRAULICKÉ SYSTÉMY

**HIDROMA
SYSTEMS**

UKŁADY HYDRAULICZNE

HYDROMA

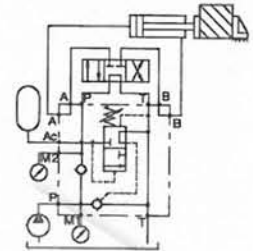
ГИДРАВЛИЧЕСКИЕ СИСТЕМЫ

AUTOMATIC CUT-OFF VALVES WITH
"NG 6" OR "NG 10" FLANGE

Type VDA/FL

Operation

Allows for pump discharge when the setting pressure is reached in P. Later the valve keeps constant pressure in P by means of the accumulator in Ac.



Performance

Body Valves

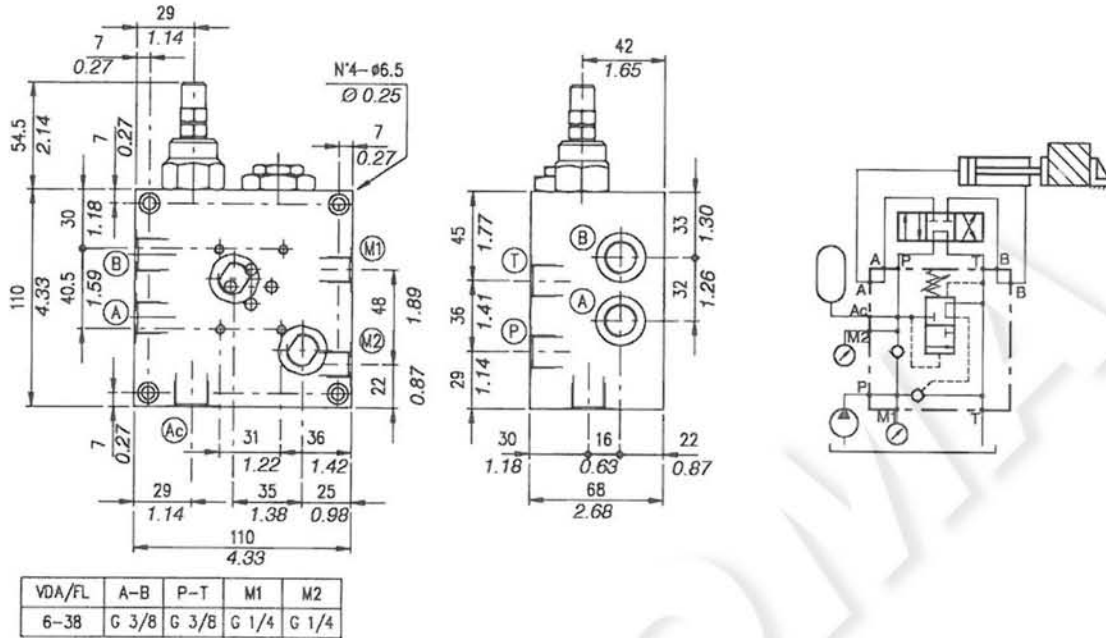
Type VDA/FL	Maximum flow		Maximum pressure		Application range with standard springs*	Connection pressure	Aluminium body weight	
	l/min	US gpm	bar	psi			kg	lb
VDA /FL 6-38	25	6.6	250 aluminium body	3600 aluminium body	5÷110 bar - 72.5÷1600 psi (test setting 90 bar -1300 psi 5 l/min. -1.32 US gpm)	15% of the valve setting pressure for standard valves, ask our technical office for special valves	2,43	5.36
VDA /FL 10-12	50	13.2			100÷250 bar - 1450÷3600 psi (test setting 200 bar -2900 psi 5 l/min. -1.32 US gpm)		2,86	6.30

*To perform setting of the valve see the pressure drop/flow diagram.

Type VDA/FL 6-38

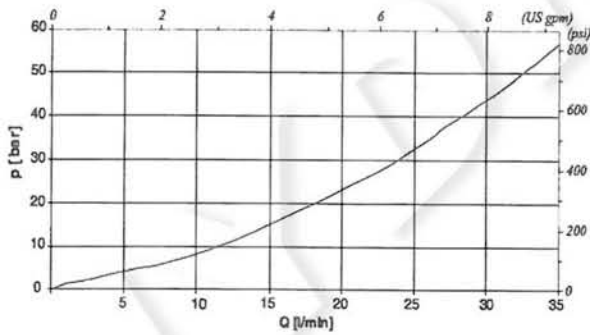
Automatic cut-off valve with "NG 6" flange

Dimensions and hydraulic circuit

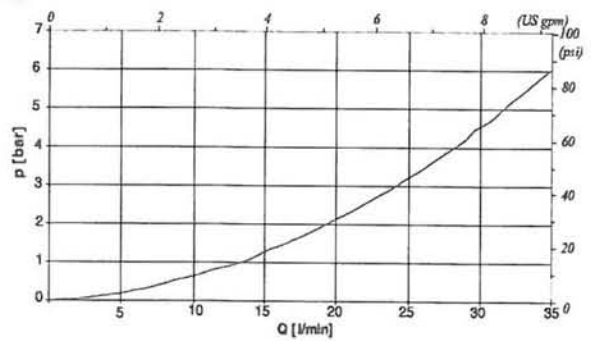


Rating diagrams

Typical Pressure drop vs. Flow characteristic P → p cetop



Typical Pressure drop vs. Flow characteristic P → T



Order code

VDA/FL 6-38 / □□ . S / □□

Pressure settings

(1450÷3600 psi)

TV) 5+110 bar (72.5÷1600 psi)

TR) 100+250 bar

Body material

Aluminium
ac Steel