

Part number:

**HYDROMA**

HYDRAULICKÉ SYSTÉMY

**HIDROMA  
SISTEMS**

UKŁADY HYDRAULICZNE

**HYDROMA**

ГИДРАВЛИЧЕСКИЕ СИСТЕМЫ

## Automatic shut-off

VEM

05.98.03 - X - Y - Z

**RE 18310-10**

Edition: 03.2016

Replaces: 07.2012



### Technical data

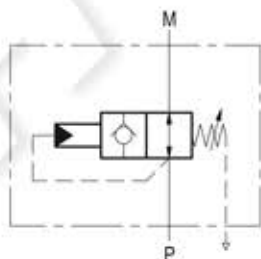
Operating pressure	up to 210 bar (3000 psi)
Max. flow	15 l/min. (4 gpm)
Weight	0.66 kg (1.46 lbs)
Manifold material	Aluminium
Note: aluminium bodies are often strong enough for operating pressures exceeding 210 bar (3000 psi), depending from the fatigue life expected in the specific application. If in doubt, consult our Service Network.	
Fluid	Mineral oil (HL, HLP) according DIN 51524
Fluid temperature range	-30 °C to 100 (-22 to 212 °F)
Viscosity range	5 to 800 mm <sup>2</sup> /s (cSt)
Recommended degree of fluid contamination	Class 19/17/14 according to ISO 4406
Other technical data	see data sheet 18350-50

Note: for applications outside these parameters, please consult us.

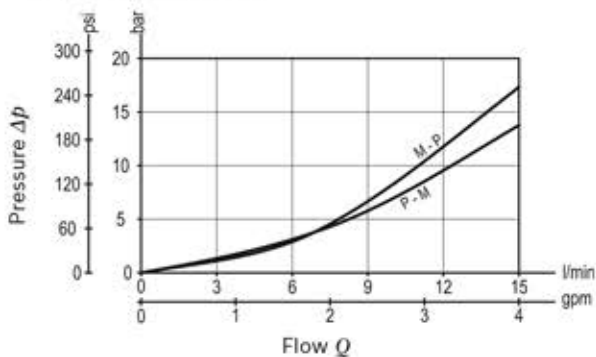
### Description

It is intended for protection of a pressure gauge M connected to a pressure line P; the valve blocks excess pressure to the instrument M, preventing calibration failure, internal damage, and "blow-out" from over-ranging – a principal cause of instrument failure. The valve is normally open, and positively closes, without chattering, when the adjusted pressure threshold is reached; a pressure reduction at P port below the set value will automatically re-open the valve, without requiring external re-setting.

**Note:** port identified with M are not protected with calibrated orifice but in direct connection with pressure channels.



### Characteristic curve




Ordering code

05.98.03	X	Y	Z
----------	---	---	---

Automatic shut-off

Adjustments

03 Leakproof hex. socket screw 

Port sizes	P	M	
09	G 1/4	G 1/4	

	SPRINGS		
	Adj. pressure range bar (psi)	Pres. increase bar/turn (psi/turn)	Std. setting Q=5 (l/min) bar (psi)
05	15-50 (220-725)	15.5 (225)	50 (725)
10	35-100 (500-1450)	33 (479)	100 (1450)
20	80-210 (1150-3000)	68 (986)	200 (2900)
35	180-350 (2600-5000)	100 (1450)	350 (5000)

Tamper resistant cap code  
ordering code 03.05.01.001  
Mat. no. R930000470



Preferred types

Type	Material number
059803030905000	R930002694
059803030910000	R930002695
059803030920000	R930002696
059803030935000	R930002698

Type	Material number

Dimensions

