

Part number:

HYDROMA

HYDRAULICKÉ SYSTÉMY

**HIDROMA
SYSTEMS**

UKŁADY HYDRAULICZNE

HYDROMA

ГИДРАВЛИЧЕСКИЕ СИСТЕМЫ

ALP1

COME ORDINARE / HOW TO ORDER

ALP1	TIPO TYPE	ROTAZIONE ROTATION	TAGLIA SIZE	ALBERO* SHAFT*	PORTE* PORTS*	GUARNIZIONI* SEALS*	OPZIONI* OPTIONS*	DRENAGGIO DRAIN
	omit	D DESTRA CLOCKWISE	2					
	A	S SINISTRA COUNTER CLOCKWISE	3					
		R** REVERSIBILE REVERSIBLE	4					
			5					
			6					
			7					
			9					
			11					
			13					
			16					
			20					

Guarnizioni / Seals
omit (T range = -10°C + 80°C)
V
...

Opzioni / Options
TR
...

**Drenaggio (solo per rotazione R)
Drain (only for R rotation)**
E0 = drenaggio interno / internal drain
*** E1 = drenaggio esterno / external drain G1/4
E2 = drenaggio esterno / external drain 9/16-18 UNF
...

(*) = campi da specificare se diversi dallo standard "tipo pompa" / to be specified if different from standard pump type
(**) = la rotazione reversibile R è disponibile per tutte le taglie indicate / R rotation is available for all listed displacements
(***) = La porta di drenaggio "E2" è lavorata secondo la specifica SAE J1926/1 (ISO 11926-1) relativa a porte filettate con tenuta O-ring. Profondità utile 12,7 mm. / "E2" drain port is machined in compliance with threaded port with O-ring seal in truncated housing SAE J1926/1 (ISO 11926-1). Thread depth 12,7 mm.

Tipi Pompa Standard / Pump Standard Types

omit = flangia europea + albero TO + porte E + guarnizioni standard / european flange + shaft TO+ ports E + standard seals
A = flangia A + albero C1 + porte FA + guarnizioni standard / flange A + shaft C1+ ports FA + standard seals

Esempi / Examples:

ALP1-D-2 = pompa destra, 1,4 cc/rev, flangia europea, albero conico 1:8, porte flangiate tipo E, guarnizioni standard
clockwise rotation, 1,4 cc/rev, european flange, 1:8 tapered shaft, flanged ports E type, standard seals

ALP1-D-2-FG-V = pompa destra, 1,4 cc/rev, flangia europea, albero conico 1:8, porte GAS (FG), guarnizioni per alta temperatura (V)
clockwise rotation, 1,4 cc/rev, european flange, 1:8 tapered shaft, threaded ports (FG), high temperature seals (V)

ALP1A-D-2-S1 = pompa destra, 1,4 cc/rev, flangia SAE A-A 2 fori, albero scanalato 9T (S1), porte filettate, guarnizioni standard
clockwise rotation, 1,4 cc/rev, SAE A-A 2 bolt flange, 9T splined shaft (S1), threaded ports, standard seals

ALP1-R-2-E1 = pompa reversibile, 1,4 cc/rev, flangia europea, albero conico 1:8, porte flangiate tipo E, guarnizioni standard, drenaggio esterno
reversible pump, 1,4 cc/rev, european flange, 1:8 tapered shaft, flanged ports E type, standard seals, external drain

LE TAVOLE DI PRODOTTO RAPPRESENTANO I TIPI POMPA STANDARD PER MARZOCCHI POMPE. LE TAVOLE SINOTTICHE DI FLANGE, ALBERI E PORTE HANNO LO SCOPO DI RAPPRESENTARE TUTTE LE POSSIBILI CONFIGURAZIONI DI PRODOTTO. PER MAGGIORI DETTAGLI SULLE DISPONIBILITÀ E CONDIZIONI DI FORNITURA, CONSIGLIAMO DI INTERPELLARE IL NOSTRO UFFICIO TECNICO-COMMERCIALE.

THE PRODUCT DATA SHEETS SHOW OUR STANDARD MODEL TYPES. THE SYNOPSIS TABLES FOR FLANGES, SHAFTS AND PORTS SHOW ALL THE POSSIBLE CONFIGURATIONS. FOR FURTHER DETAILS ABOUT THE AVAILABILITY OF EACH CONFIGURATION PLEASE CONTACT OUR SALES AND TECHNICAL DEPT.

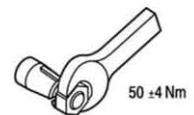
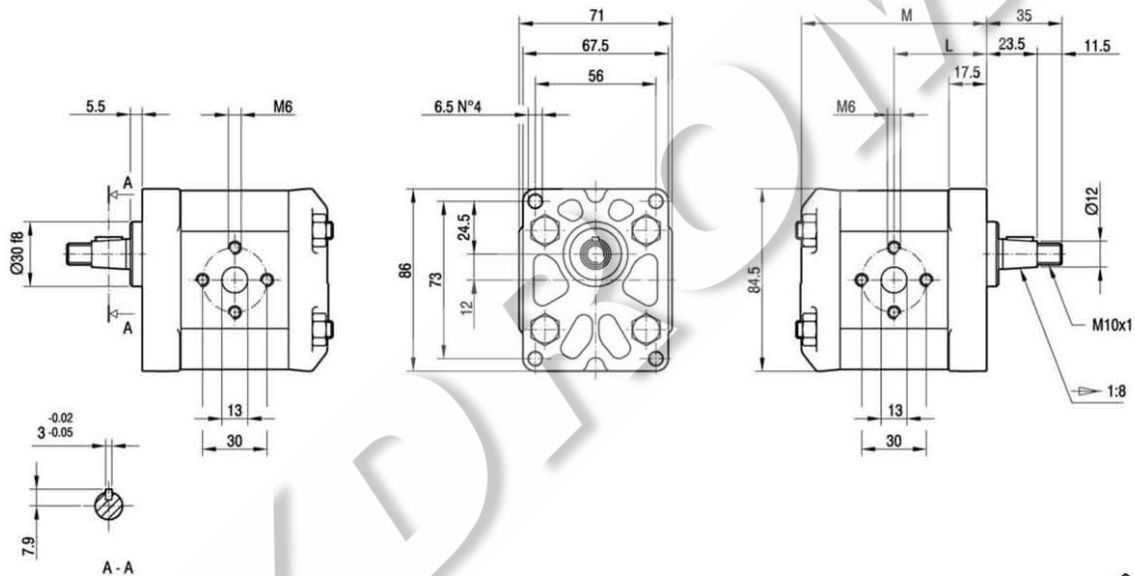
ALP1

Parti accessorie a corredo della pompa standard: linguetta a disco (codice 522054), dado M10x1 (codice 523015), rosetta elastica spaccata (codice 523004).
 Parte standard: filetti M6 profondità utile 13 mm.

Accessories supplied with the standard pump: woodruff key (code 522054), M10x1 exagonal nut (code 523015), washer (code 523004).
 Standard parts: M6 threads depth 13 mm.

MANDATA
OUTLET

ASPIRAZIONE
INLET



TIPO TYPE	CILINDRATA DISPLACEMENT	PORTATA a 1500 giri/min FLOW at 1500 rev/min	PRESSIONI MASSIME MAX PRESSURE			VELOCITÀ MASSIMA MAX SPEED	DIMENSIONI DIMENSIONS	
			P ₁	P ₂	P ₃		L	M
	cm ³ /giro [cm ³ /rev]	litri/min [litres/min]	bar	bar	bar	giri/min [rpm]	mm	mm
ALP1-D-2	1,4	2,0	250	270	290	6000	40	80,5
ALP1-D-3	2,1	2,9	250	270	290	6000	41	82,5
ALP1-D-4	2,8	3,9	250	270	290	5000	42	84,5
ALP1-D-5	3,5	4,9	250	270	290	5000	43	86,5
ALP1-D-6	4,1	5,9	250	270	290	4000	44	88,5
ALP1-D-7	5,2	7,4	230	245	260	4000	45,5	91,5
ALP1-D-9	6,2	8,8	230	245	260	3800	47	94,5
ALP1-D-11	7,6	10,8	200	215	230	3200	49	98,5
ALP1-D-13	9,3	13,3	180	195	210	2600	51,5	103,5
ALP1-D-16	11,0	15,7	170	185	200	2200	54	108,5
ALP1-D-20	13,8	19,7	150	165	180	1800	58	116,5

ALPIA

Parti accessorie a corredo della pompa standard: linguetta (codice 522070).
Monta flangia 50-2 (A-A) secondo norma SAE J744c.

Le porte standard "D" e "d" sono lavorate secondo la specifica SAE J1926/1 (ISO 11926-1) relativa a porte filettate con tenuta O-ring.

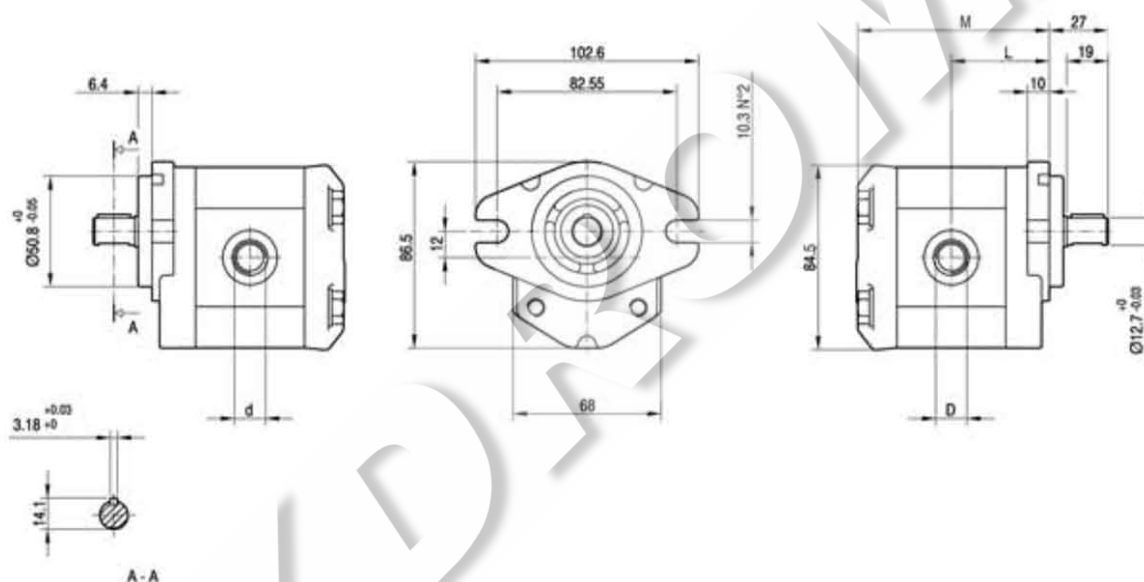
Accessories supplied with the standard pump: key (code 522070).

Mounting flange 50-2 (A-A) in compliance with SAE J744c.

"D" and "d" standard parts are machined in compliance with threaded port with O-ring seal in truncated housing SAE J1926/1 (ISO 11926-1).

MANDATA
OUTLET

ASPIRAZIONE
INLET

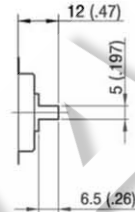
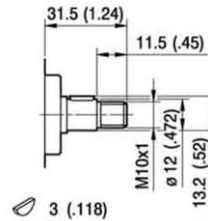
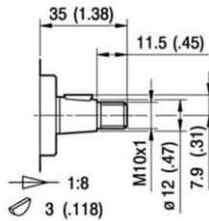
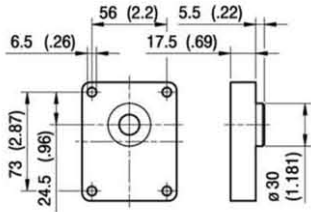


TIPO TYPE	CILINDRATA DISPLACEMENT	PORTATA a 1500 giri/min FLOW at 1500 rev/min	PRESSIONI MASSIME MAX PRESSURE			VELOCITÀ MASSIMA MAX SPEED	DIMENSIONI DIMENSIONS			
			P ₁	P ₂	P ₃		L	M	d	D
	cm ³ /gira [cm ³ /rev]	litri/min [litres/min]	bar	bar	bar	giri/min [rpm]	mm	mm		
ALPIA-D2	1,4	2,0	250	270	290	6000	42	82,5	9/16-18 UNF	3/4-16 UNF
ALPIA-D3	2,1	2,9	250	270	290	6000	43	84,5	9/16-18 UNF	3/4-16 UNF
ALPIA-D4	2,8	3,9	250	270	290	5000	44	86,5	9/16-18 UNF	3/4-16 UNF
ALPIA-D5	3,5	4,9	250	270	290	5000	45	88,5	9/16-18 UNF	3/4-16 UNF
ALPIA-D6	4,1	5,9	250	270	290	4000	46	90,5	9/16-18 UNF	3/4-16 UNF
ALPIA-D7	5,2	7,4	230	245	260	3500	47,5	93,5	9/16-18 UNF	3/4-16 UNF
ALPIA-D9	6,2	8,8	230	245	260	3000	49	96,5	9/16-18 UNF	3/4-16 UNF
ALPIA-D11	7,6	10,8	200	215	230	3500	51	100,5	3/4-16 UNF	7/8-14 UNF
ALPIA-D13	9,3	13,3	180	195	210	3000	53,5	105,5	3/4-16 UNF	7/8-14 UNF
ALPIA-D16	11,0	15,7	170	185	200	2500	56	110,5	3/4-16 UNF	7/8-14 UNF
ALPIA-D20	13,8	19,7	150	165	180	2000	60	118,5	3/4-16 UNF	7/8-14 UNF

ALP1

FLANGE / FLANGES

ALBERI / SHAFTS



TO

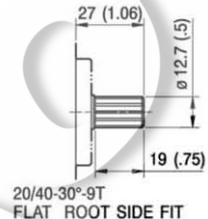
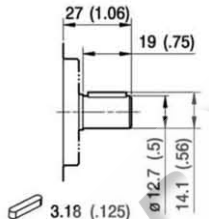
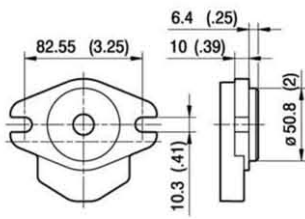
Coppia Max
Max Torque 100 Nm

C0

Coppia Max
Max Torque 55 Nm

G0

Coppia Max
Max Torque 45 Nm



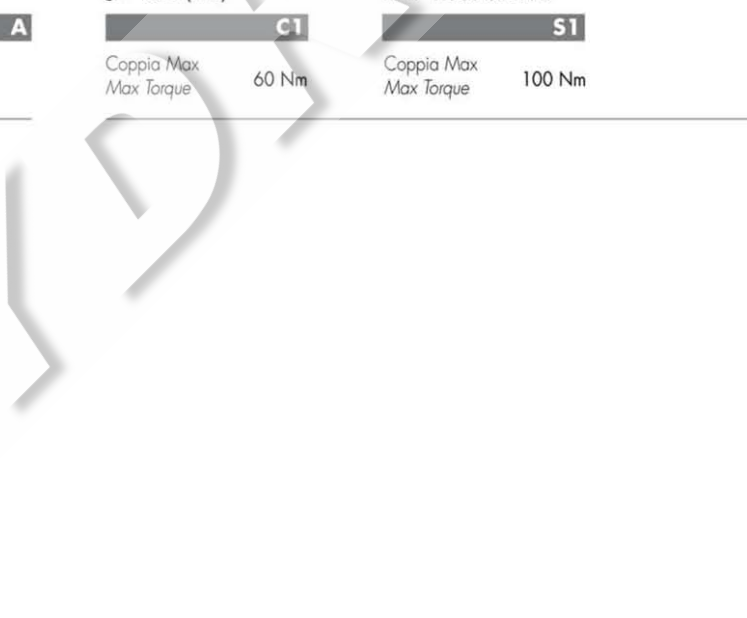
20/40-30°-9T
FLAT ROOT SIDE FIT

C1

Coppia Max
Max Torque 60 Nm

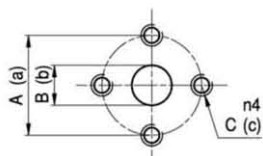
S1

Coppia Max
Max Torque 100 Nm



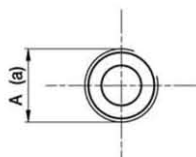
ALP1

PORTE / PORTS



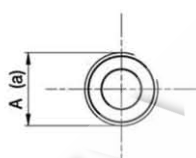
TIPO TYPE	ASPIRAZIONE INLET			MANDATA OUTLET		
	A	B	C	a	b	c
ALP1...2 ÷ ALP1...20	30	13	M6	30	13	M6

I valori delle coppie di serraggio delle viti presenti nel kit raccordo sono indicate a pag 57 (capitolo accessori).
Tightening torques of the fittings screws are specified on page 57 (accessories section).



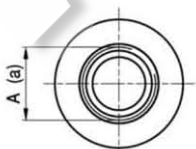
TIPO TYPE	ASPIRAZIONE INLET	MANDATA OUTLET
	A	a
ALP1...2 ÷ ALP1...5	G1/2	G3/8
ALP1...6 ÷ ALP1...20	G1/2	G1/2

Raccordo G1/2 coppia di serraggio massima 50 Nm. Raccordo G3/8 coppia di serraggio massima 35 Nm.
Consigliamo di richiedere conferma al fornitore del raccordo.
Tightening torques for G1/2 fitting: 50 Nm. Tightening torques for G3/8 fitting: 35 Nm. Please check with the fittings suppliers.



TIPO TYPE	ASPIRAZIONE INLET	MANDATA OUTLET
	A	a
ALP1...2 ÷ ALP1...20	Rc1/2	Rc1/2

Raccordo Rc1/2 coppia di serraggio massima 50 Nm.
Consigliamo di richiedere conferma al fornitore del raccordo.
Tightening torques for Rc1/2 fitting: 50 Nm. Please check with the fittings suppliers.

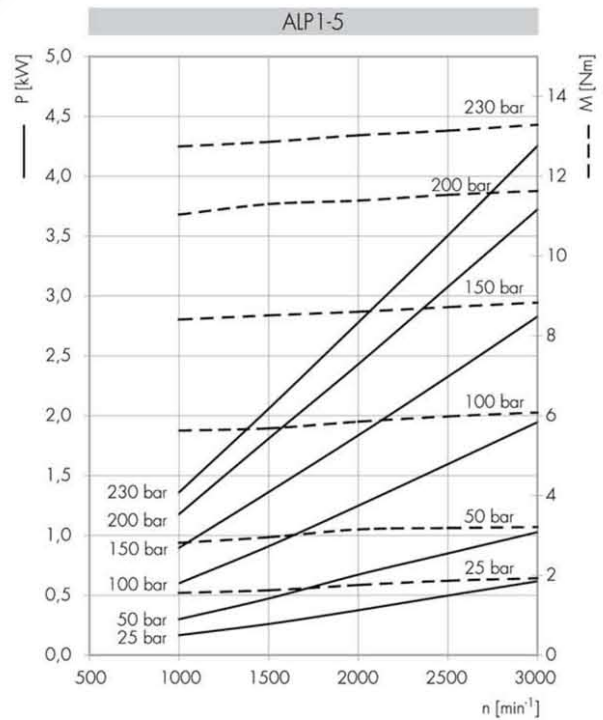
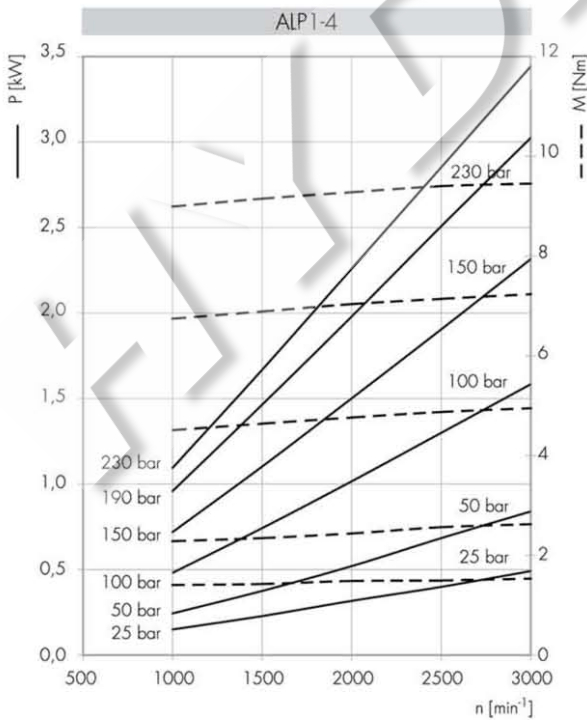
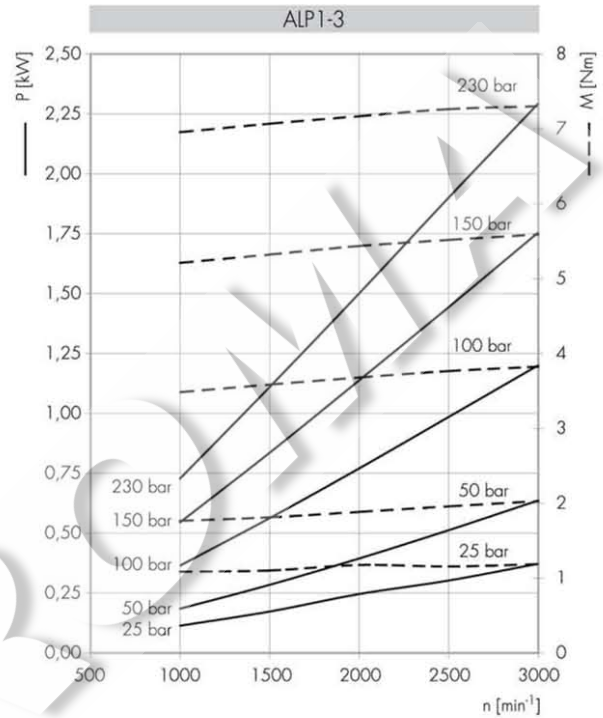
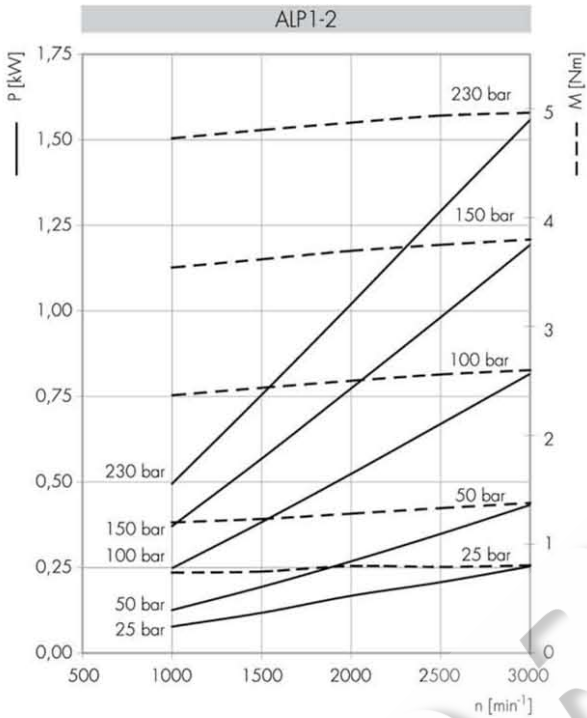


STANDARD SAE J1926/1

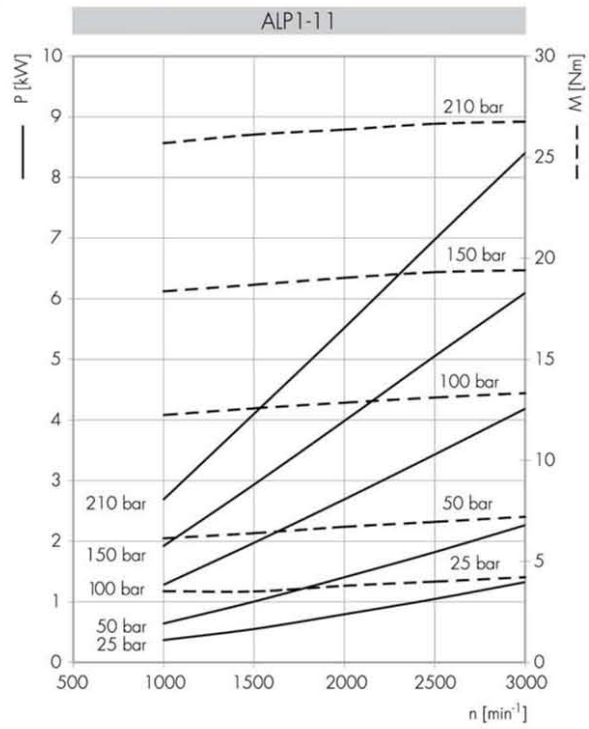
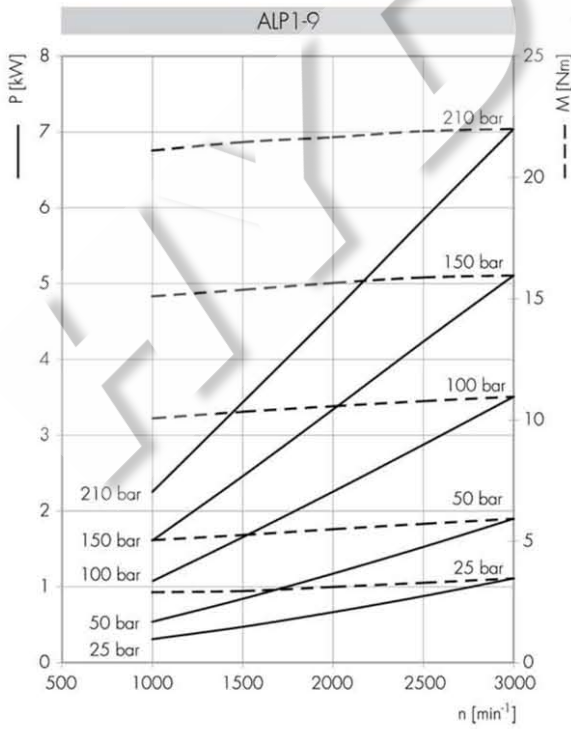
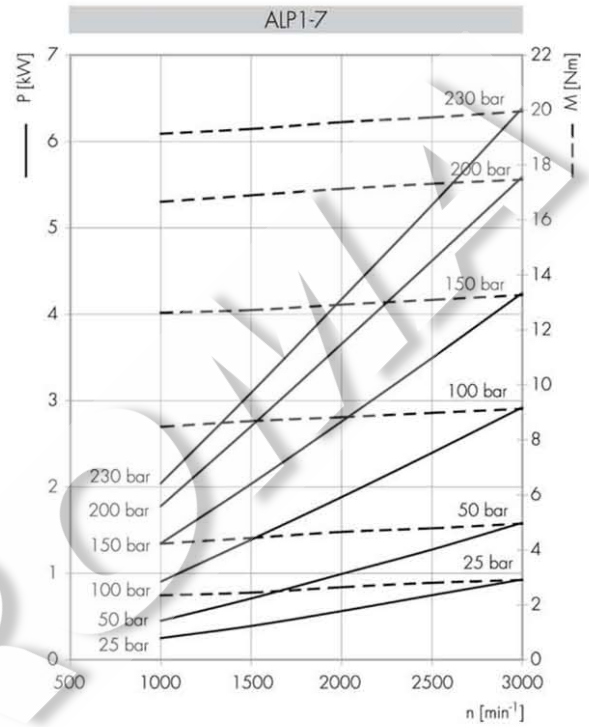
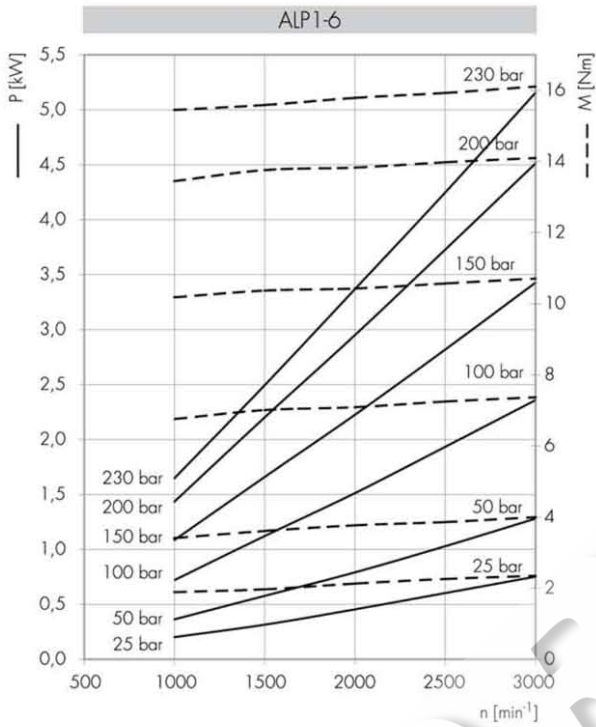
TIPO TYPE	ASPIRAZIONE INLET	MANDATA OUTLET
	A	a
ALP1...2 ÷ ALP1...9	3/4-16 UNF	9/16-18 UNF
ALP1...11 ÷ ALP1...20	7/8-14 UNF	3/4-16 UNF

Raccordo 9/16-18 UNF coppia di serraggio massima 30 Nm. Raccordo 3/4-16 UNF coppia di serraggio massima 60 Nm.
Raccordo 7/8-14 UNF coppia di serraggio massima 70 Nm. Consigliamo di richiedere conferma al fornitore del raccordo.
Tightening torques for 9/16-18 UNF fitting: 30 Nm. Tightening torques for 3/4-16 UNF fitting: 60 Nm.
Tightening torques for 7/8-14 UNF fitting: 70 Nm. Please check with the fittings suppliers.

Potenza assorbita Absorbed power P [kW]
 Momento torcente assorbito Absorbed torque M [Nm]
 Velocità di rotazione Drive speed n [giri/min] [rpm]



Potenza assorbita Absorbed power P [kW]
 Momento torcente assorbito Absorbed torque M [Nm]
 Velocità di rotazione Drive speed n [giri/min] [rpm]



Potenza assorbita Absorbed power P [kW]
 Momento torcente assorbito Absorbed torque M [Nm]
 Velocità di rotazione Drive speed n [giri/min] [rpm]

