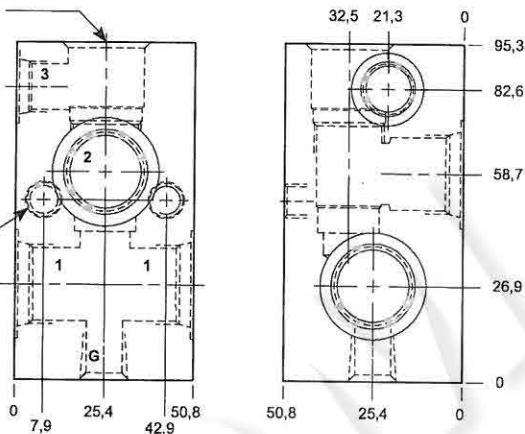


Through port body with gauge port.

T-11A Cavity
Locating Shoulder
Depth 18,3 mm.

Mounting Holes:
(opposite side)
Inch: .375-16 UNC-2B
x 15,7 mm. deep.
Metric: M10 x 1.50-6H
x 15,7 mm. deep.
2 places.



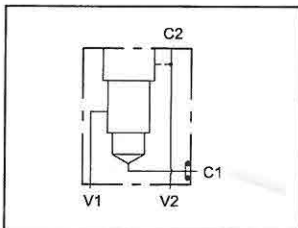
Series 1 T-11A

**TYPICAL CARTRIDGES
USED WITH THIS BODY**

RBAD - ***	Page	1.17
RVCA - ***	Page	1.18
RSDC - ***	Page	2.06
SQDB - ***	Page	2.08
SCCA - ***	Page	2.12
PBDB - ***	Page	3.06
LODC - ***	Page	9.08

Instructions for ordering
complete cartridge and body
assemblies. Page viii
Pressure ratings, material
specifications. Page 11.02

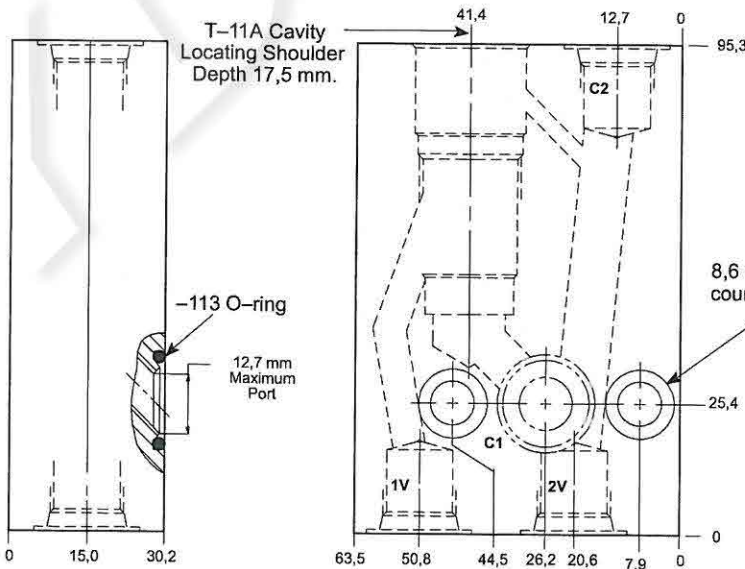
Mounting Hole Dimensions	Parts 1 & 2	Part 3	Gauge Port	ALUMINIUM		SG IRON	
				Model Code	List Price	Model Code	List Price
Inch	.25 NPTF	.25 NPTF	.25 NPTF	EHA		EHA/S	
Inch	.375 NPTF	.25 NPTF	.25 NPTF	EHB		EHB/S	
Inch	.50 NPTF	.25 NPTF	.25 NPTF	EHC		EHC/S	
Inch	SAE-6	SAE-6	.25 NPTF	EHI		EHI/S	
Inch	SAE-8	SAE-6	.25 NPTF	EJH		EJH/S	
Inch	SAE-10	SAE-6	.25 NPTF	EJK		EJK/S	
Metric	.25 BSPP	.25 BSPP	.25 BSPP	EHT		EHT/S	
Metric	.375 BSPP	.25 BSPP	.25 BSPP	EHU		EHU/S	
Metric	.50 BSPP	.25 BSPP	.25 BSPP	EHV		EHV/S	



Gasket mount body for load control applications.

T-11A Cavity
Locating Shoulder
Depth 17,5 mm.

Mounting Holes:
8,6 mm. diameter through hole,
counterbore 12,7 mm. diameter
x 6,4 mm. deep.



**TYPICAL CARTRIDGES
USED WITH THIS BODY**

CBGA - ***	Page	4.11
CBCG - ***	Page	4.12
CBCH - ***	Page	4.14
CKCB - ***	Page	4.16

Cartridge seal type determines
O-ring type.
Instructions for ordering
complete cartridge and body
assemblies. Page viii
Pressure ratings, material
specifications. Page 11.02

Ports C2, V1, V2	ALUMINIUM		SG IRON	
	Model Code	List Price	Model Code	List Price
.375 NPTF	ZTN		ZTN/S	
SAE-6	ZTC		ZTC/S	
.375 BSPP	ZTD		ZTD/S	