

Part number:

HYDROMA

HYDRAULICKÉ SYSTÉMY

**HIDROMA
SYSTEMS**

UKŁADY HYDRAULICZNE

HYDROMA

ГИДРАВЛИЧЕСКИЕ СИСТЕМЫ

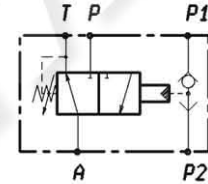
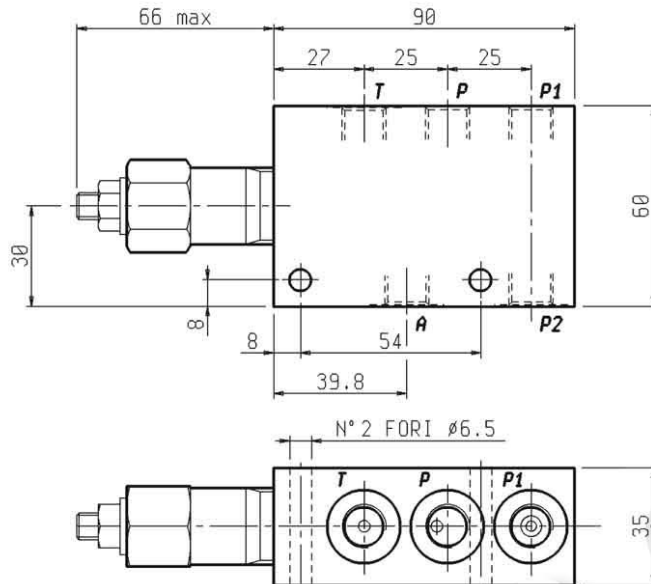
ELEMENTO DIREZIONALE 3 VIE 2 POSIZIONI
A COMMUTAZIONE TRAMITE ATTACCO "P1" E "P2"

ED-3-2-UF-14-05-A

DENOMINAZIONE VALVOLA
VALVE DENOMINATION

05.93.34.03.09.05.00.A

CODICE D'ORDINAZIONE
ORDERING CODE



Pressione di lavoro max
350 bar

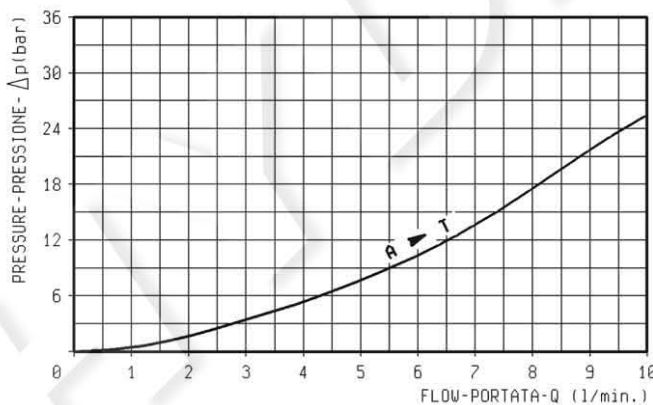
Max working pressure
350 bar

Portata max
8 l/min.

Flow max
8 l/min.

Peso Kg 0,66

Weight Kg 0,66



**REGOLAZIONI
ADJUSTMENTS**

vite esterna
esagono incassato
leakproof hex.
socket screw



MOLLE - SPRINGS				
Campo taratura min-max bar Adj.press. range bar	Incremento pressione bar/giro vite Pressure increase bar/turn	Taratura standard bar(0-5 1/1') Std.setting bar (made at 5 1/1')	Codice ordinazione Ordering code	Colore Colour
3.5 - 8	0.5	5	03.51.01.137	

ATTACCHI - PORT SIZE	
A - T - P - P1 - P2	
G 1/4	