

Part number:

HYDROMA

HYDRAULICKÉ SYSTÉMY

**HIDROMA
SISTEMS**

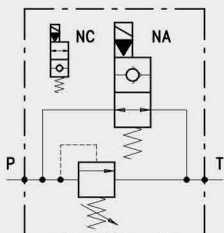
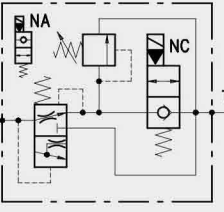
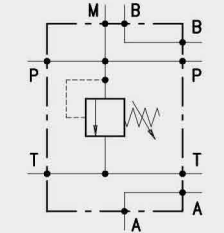
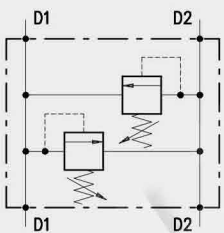
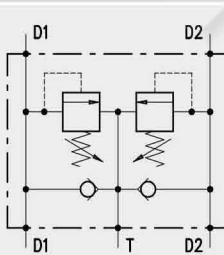
UKŁADY HYDRAULICZNE

HYDROMA

ГИДРАВЛИЧЕСКИЕ СИСТЕМЫ

PRESSURE RELIEF VALVES

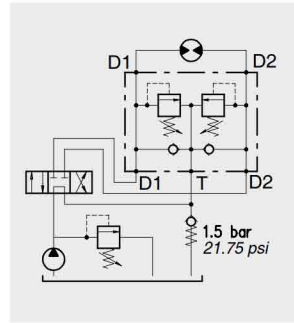
Index

Hydraulic diagram	Type	Description	Maximum flow up to		Maximum pressure		Page
			l/min	US gpm	bar	psi	
	VMP/VE 14 (38)	Pressure relief valve with electric bypass	35	9.2	350	5100	77
	VMP/VE 12 (34)	Pressure relief valve with electric bypass	90	24	350	5100	73
VMP/VE 100 (114)	250		66				
	PBL	Basic block (NG 06 or 10) with conical pressure relief valve, direct acting	60	16	350	5100	81
	VAIL	Dual cross-line relief valve. Direct acting, poppet type, line mounting.	180	48	350	5100	85
VADDL	Dual cross-line relief valve. Differential control, poppet type, line mounting.	85					
	VAIL/VA	Dual cross-line relief valve. Direct acting, poppet type, line mounting.	80	21	300	4350	93
VADDL/VA	Dual cross-line relief valve with anti cavitation. Differential control, poppet type, line mounting.	180					

Operation

Direct acting (differential control for the VADDL/VA), poppet type, line mounting. The valve allows pressure relief on delivery pipes to engines and cylinders. When the actuator is braking, two check valves allow for anti cavitation on delivery side.

Actuator close mount is recommended to assure a more rapid valve action.



Performance

Body Valves

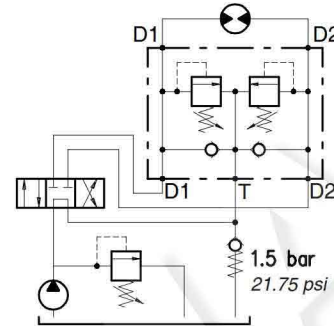
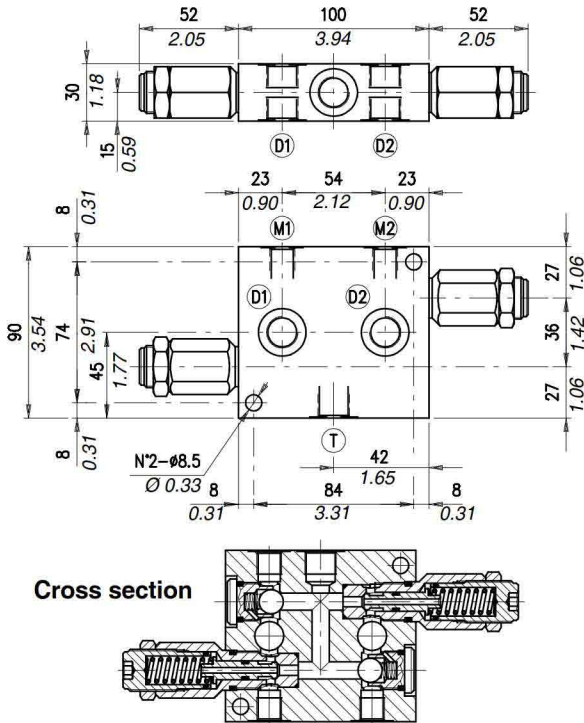
*To perform setting of the valve see the pressure drop/ flow diagram

Type	Max. flow		Max. pres.		Application range with standard spring*	Hysteresis	Oil leaks from P to T	Weight		Cartridge
	l/min	US gpm	bar	psi				kg	lb	
VAIL/VA 12	35	9.2	alum. body 210 steel body 300	alum. body 3050 steel body 4350	5÷40 bar - 72.5÷580 psi (test setting 30 bar - 435 psi at 5 l/min. - 1.32 US gpm) 20÷100 bar - 290÷1450 psi (test setting 70 bar - 1015 psi - at 5 l/min. - 1.32 US gpm)	85% of the setting value for flow capacity 1 l/min. - 0.26 US gpm-	disregardable	alum. body 1,24	alum. body 2.73	VMP 12
VAIL/VA 34	80	21			50÷200 bar - 725÷2900 psi (test setting 140 bar - 2050 psi at 5 l/min. - 1.32 US gpm) 100÷300 bar - 1450÷4350 psi (test setting 210 bar - 3050 psi at 5 l/min. - 1.32 US gpm)			alum. body 2,20	alum. body 4.85	
VADDL/VA 38	35	9.2			5÷210 bar - 72.5÷3050 psi (test setting 150 bar - 2200 psi at 5 l/min. - 1.32 US gpm) 50÷350 bar - 72.5÷5100 psi - (test setting 250 bar - 3600 psi at 5 l/min. - 1.32 US gpm)			alum. body 1,14	alum. body 2.51	VMPD 38
VADDL/VA 12	60	16			50÷210 bar - 72.5÷3050 psi (test setting 150 bar - 2200 psi at 5 l/min. - 1.32 US gpm) 50÷250 bar - 725÷3600 psi (test setting 250 bar 3600 psi at 5 l/min. - 1.32 US gpm)			alum. body 1,58	alum. body 3.48	
VADDL/VA 34 (100)	(34) 120 (100) 180	(34) 32 (100) 48			5÷210 bar - 72.5÷3050 psi (test setting 150 bar - 2200 psi at 5 l/min. - 1.32 US gpm) 50÷350 bar - 72.5÷5100 psi (test setting 250 bar - 3600 psi at 5 l/min. - 1.32 US gpm)			(34) alum. body 3,25	(34) alum. body 7.16	VMPD 34
				steel body 6,50	steel body 14.33					
				(100) alum. body 4,10	(100) alum. body 9.04					
				steel body 7,90	steel body 17.42					

Type VADDL/VA 38

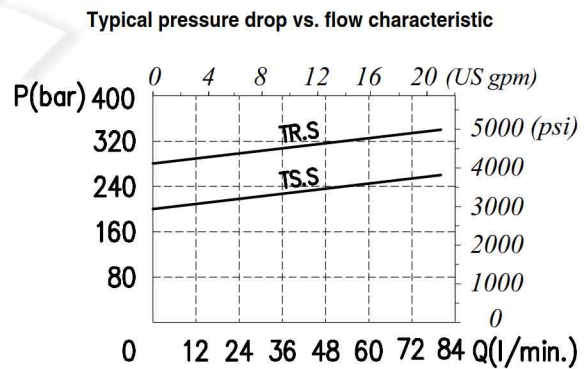
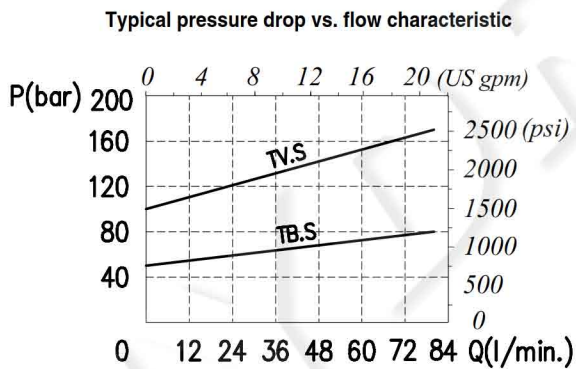
Dual cross-line relief valve with anti cavitation.
Differential control, poppet type, line mounting

Dimensions and hydraulic circuit



D1	D2	M1	M2	T
G 3/8	G 3/8	G 1/4	G 1/4	G 3/8

Rating diagrams



Order code

VADDL /VA 38 / □□ . S / □□

Pressure settings

Body material

TS) 5÷210 bar (72.5÷580 psi)
TR) 50÷350 bar (725÷5100 psi)

_ Aluminium
ac Steel