

Part number:

HYDROMA

HYDRAULICKÉ SYSTÉMY

**HIDROMA
SISTEMS**

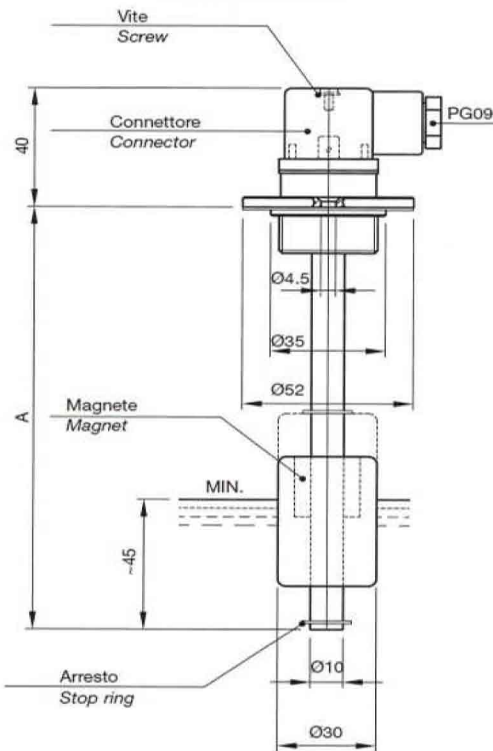
UKŁADY HYDRAULICZNE

HYDROMA

ГИДРАВЛИЧЕСКИЕ СИСТЕМЫ

LIVELLOSTATI ELETTROMAGNETICI Float level switches

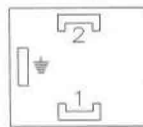
**LM1FA...
LM2FA...**



Collegamenti elettrici standard
Standard electrical connection

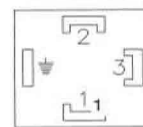
Simboli
Symbol

LM1



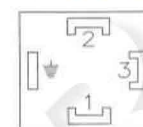
Simboli
Symbol

LM2

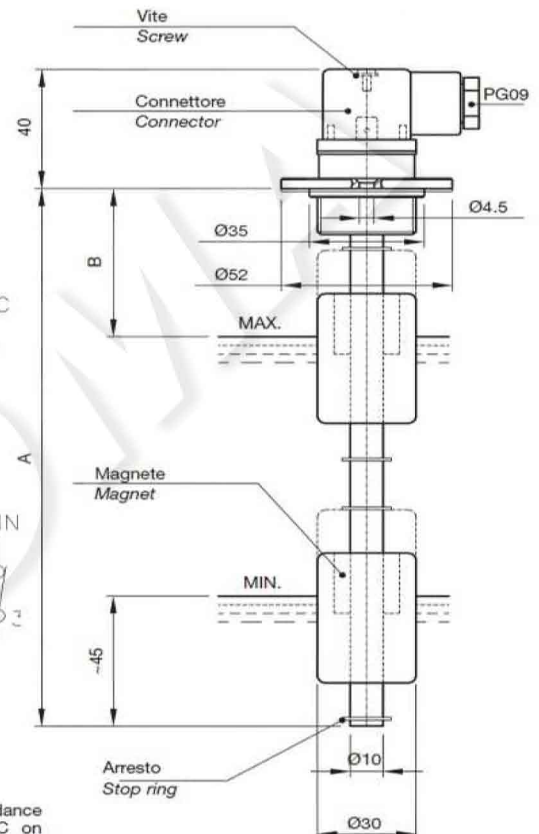


Simboli
Symbol

LMM1



LMM1FA...B...



Disponibili in versione conforme alla Direttiva ATEX 94/9/CE in esecuzione a sicurezza intrinseca con stringa di certificazione II 2 G EEx ia IIB T6.



Executions also available in accordance with the Directive ATEX 94/9/EC on intrinsic safety equipment with marking II 2 G EEx ia IIB T6.

COSTRUZIONE: flangia in alluminio anodizzato, tubo in ottone, molla e anelli di arresto in bronzo, galleggiante in resina espansa NBR.

IMPIEGO E DATI TECNICI (vedere pag. 4 - 5 - 6 - 7).

N.B. - A richiesta, forniamo lunghezze superiori fino a 1500 mm, oppure diverse da quelle indicate in tabella.

MATERIAL: threaded flange in anodized aluminium, brass stem, spring and stop ring in bronze. NBR float.

APPLICATION AND SPECIFICATIONS (see page 4 - 5 - 6 - 7).

N.B. - Customized lengths can be supplied on request. Max. length 1500 mm.

LM1.../LM2...		LMM1...		
		A	B	
TIPO Model	TIPO Model			TIPO Model
LM1FA100	LM2FA100	100		
LM1FA150	LM2FA150	150		
LM1FA200	LM2FA200	200	60	LMM1FA200B60
LM1FA250	LM2FA250	250	60	LMM1FA250B60
LM1FA300	LM2FA300	300	60	LMM1FA300B60
LM1FA350	LM2FA350	350	60	LMM1FA350B60
LM1FA400	LM2FA400	400	70	LMM1FA400B70
LM1FA450	LM2FA450	450	70	LMM1FA450B70
LM1FA500	LM2FA500	500	80	LMM1FA500B80