

Part number:

HYDROMA

HYDRAULICKÉ SYSTÉMY

**HIDROMA
SISTEMS**

UKŁADY HYDRAULICZNE

HYDROMA

ГИДРАВЛИЧЕСКИЕ СИСТЕМЫ

Air Bleed Valves

Usage and Operation

This valve may be used to simplify pump priming at start-up in a blocked circuit, or to remove air trapped in the system.

When used to facilitate priming, the valve is teed into the pump outlet, as close to the pump as possible, and upstream of the balance of the circuit.

It lets air pass at low pressure (start-up) to the drain, and shuts off oil flow at pressures above 0,83 bar (12 psi).

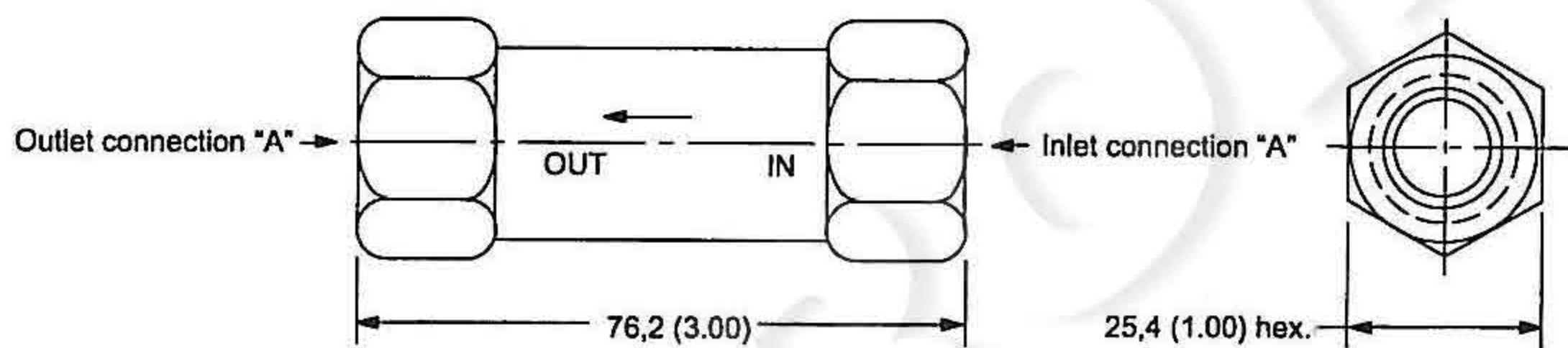
The valve will pass 7,6 L/min (2 USgpm) just before shutting off. Therefore, it is recommended only for systems with a minimum supply that exceeds 7,6 L/min (2 USgpm.)

When used to remove air trapped in the system, the valve should be placed at the highest point of the circuit

Pressure and Weight

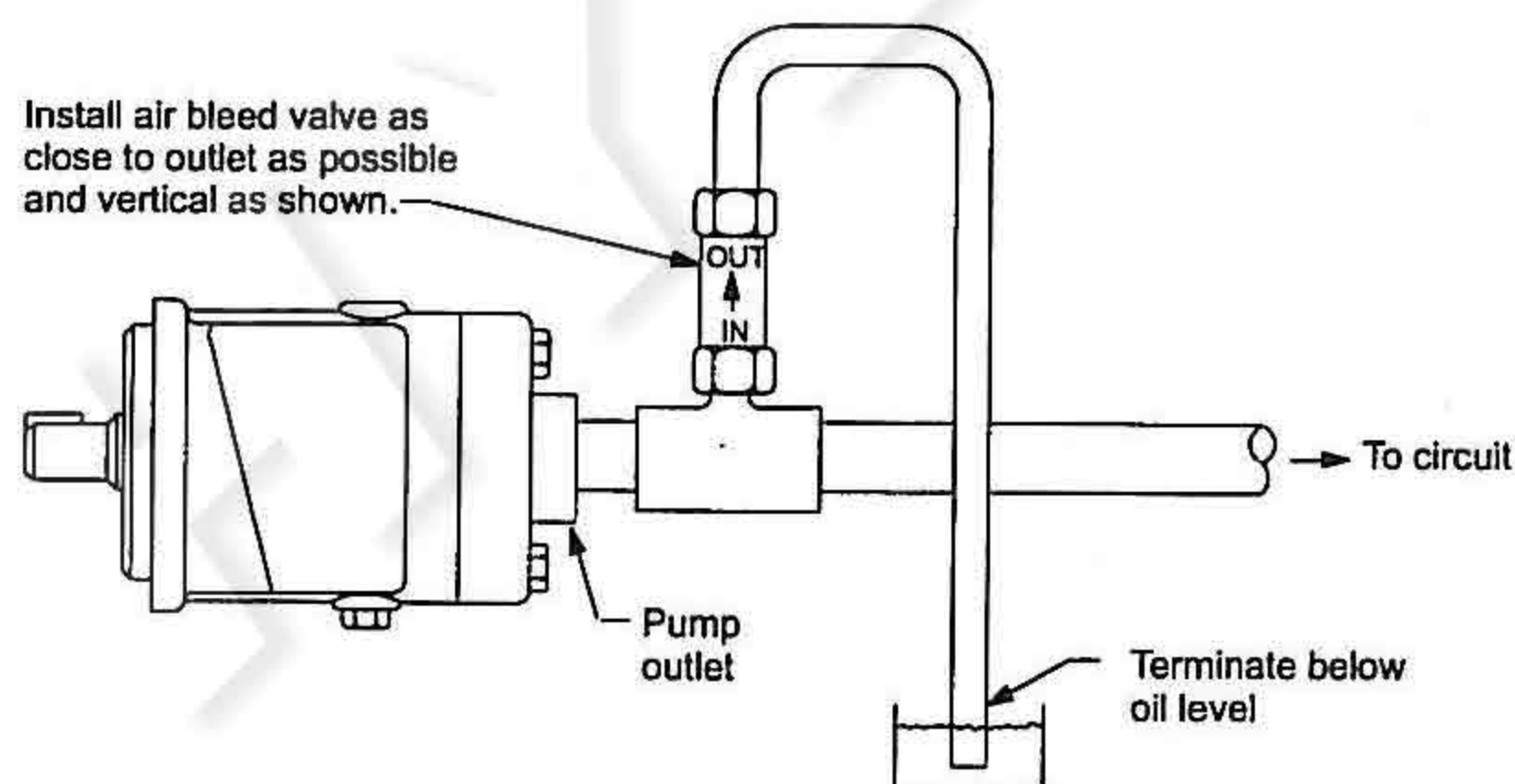
Maximum pressure is 210 bar (3000 psi). Approximate weight is 0,34 kg (12 oz).

Dimensions in Millimeters (Inches)

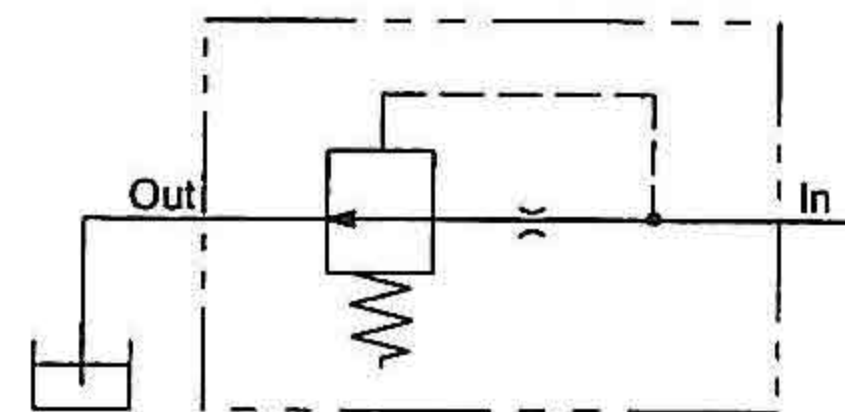


Model Number	Connection "A"
ABT-03-10	3/8 NPTF pipe thread
ABS-12-10	.750-16 UNF-2B straight thread for .50 O.D. tube

Typical Pump Priming Installation



Air Bleed Valve Symbol



Important: Terminate return line to reservoir below oil level.