

Part number:

RE 18309-47/04.10

1/2

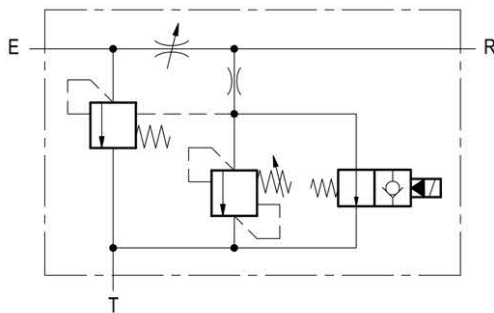
Replaces: RE 00171/02.07

# Flow regulator, 3-way, pressure compensated with relief and solenoid control



VRFC3-VS-VEI

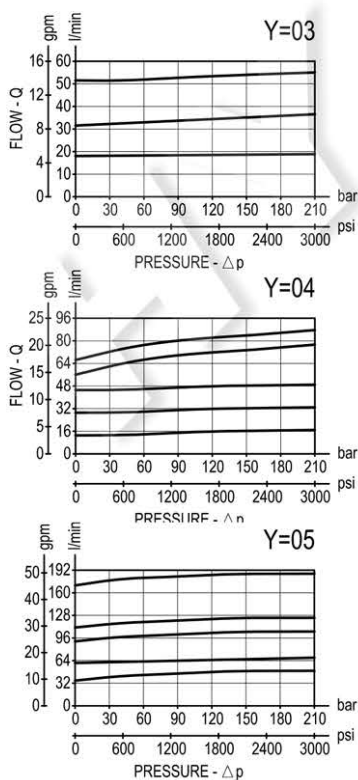
0M.36.03 - X - Y



## Description

A constant pressure compensated flow rate is established from E to R, while a minimum pressure differential of appr. 5 bar (70 psi) exists between the two ports. Input flow supplied to E in excess of the regulated output at R is by-passed to T. Output flow can be varied from closed to the nominal maximum rating of the valve and it can be dumped to Tank in two ways: 1) by a N.O. solenoid cartridge which determines Regulated flow dumping when de-energized; 2) by a pilot relief cartridge which determines Regulated flow dumping if the maximum allowed pressure is reached. Reverse flow from R to E is limited by the selected opening of the restrictor and is not pressure compensated. Flow from T to E or from T to R is not permitted.

## Performance



## Technical data

### Hydraulic

Operating pressure bar (psi) up to 210 (3000)

Adj. relief valve: range 35-210 bar (500-3000 psi)

Standard setting: 210 bar (3000 psi)

QE = max inlet flow "E" port (see "Dimensions")

QR = max regulated flow "R" port (see "Dimensions")

Flow range adjustment : 0 - 3 turns

Pressure drop from E-T: cracking pressure 6 bar (90 psi), full flow 12 bar (175 psi)

**The coil must be ordered separately**

### General

Manifold material Aluminium

Note: aluminium bodies are often strong enough for operating pressures exceeding 210 bar (3000 psi), depending from the fatigue life expected in the specific application. If in doubt, consult our Service Network.

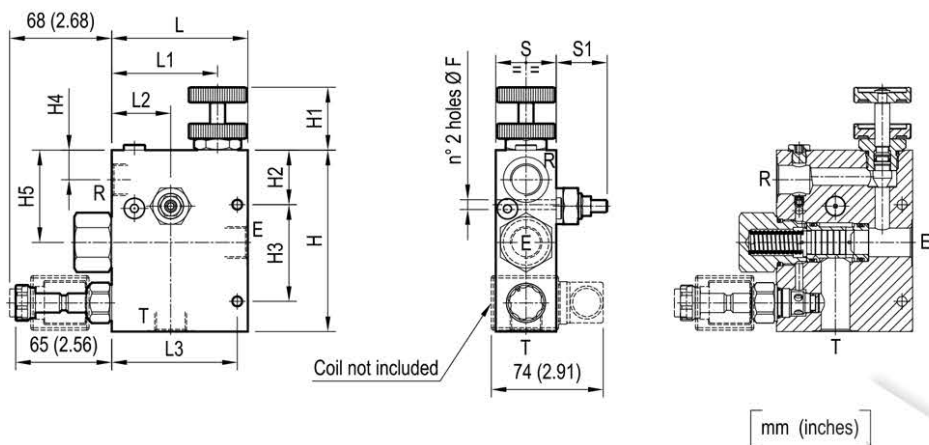
Weight see "Dimensions"

Fluid temperature range °C (°F) between -30 (-22) and +100 (212)

Other technical data see data sheet RE 18350-50

**Note:** for applications outside these parameters, please consult us.

## Dimensions



34 (1.34)	60 (2.36)	100 (3.94)	46 (1.81)	83 (3.27)	110 (3.94)	90 (3.54)	28 (1.1)	75 (2.95)	60 (2.36)	40 (1.58)	155 (6.1)	8.5 (0.34)	190 l/min 50 gpm	280 l/min 74 gpm	G 1	3.1 (6.8)
34 (1.34)	50 (1.97)	100 (3.94)	44 (1.73)	81 (3.19)	110 (4.33)	75 (2.95)	23 (0.91)	74 (2.91)	46 (1.81)	40 (1.58)	140 (5.51)	8.5 (0.34)	90 l/min 24 gpm	150 l/min 40 gpm	G 3/4	2.7 (6)
34 (1.34)	40 (1.58)	83 (3.27)	39 (1.54)	70 (2.76)	90 (3.54)	60 (2.36)	17.5 (0.69)	64 (2.52)	36 (1.42)	40 (1.58)	120 (4.72)	6.5 (0.26)	55 l/min 15 gpm	90 l/min 24 gpm	G 1/2	1.68 (3.7)
S1	S	L3	L2	L1	L	H5	H4	H3	H2	H1	H	F	QR	QE	Y	Weight kg (lbs)

## Ordering code

**0M.36.03 X Y**

Flow regulator,  
3-way, pressure compensated  
with relief and solenoid control

Adjustments

= 70 Handknob and locknut



= 80 Screw and locknut



= 40 Graduated handknob



Port sizes	E - R - T
= 03	G 1/2
= 04	G 3/4
= 05	G 1

Type	Material number
0M360370030000B	R930004278
0M360370040000B	R930004279
0M360370050000A	R930004280
0M3603800300000	R930000286
0M3603800400000	R930000346
0M3603800500000	R930000382
0M360340030000B	R930004276
0M3603400400000	R930000301

Type	Material number
0M360340050000B	R930004277