

Part number:

HYDROMA

HYDRAULICKÉ SYSTÉMY

**HIDROMA
SISTEMS**

UKŁADY HYDRAULICZNE

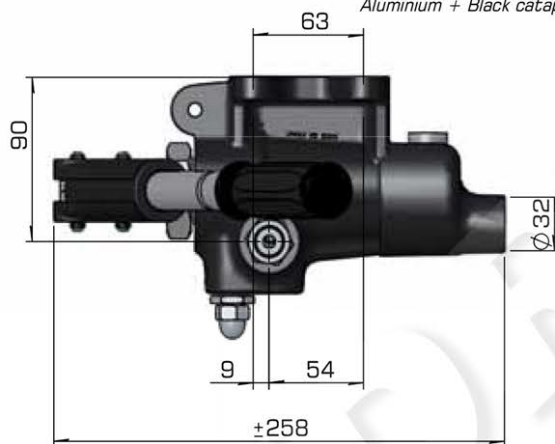
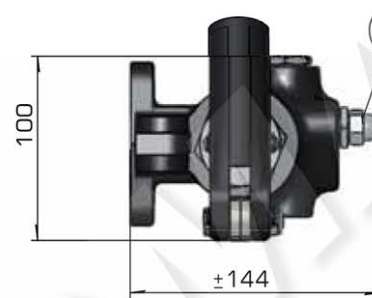
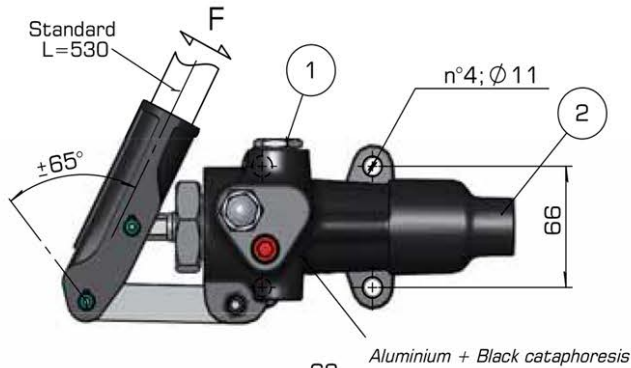
HYDROMA

ГИДРАВЛИЧЕСКИЕ СИСТЕМЫ

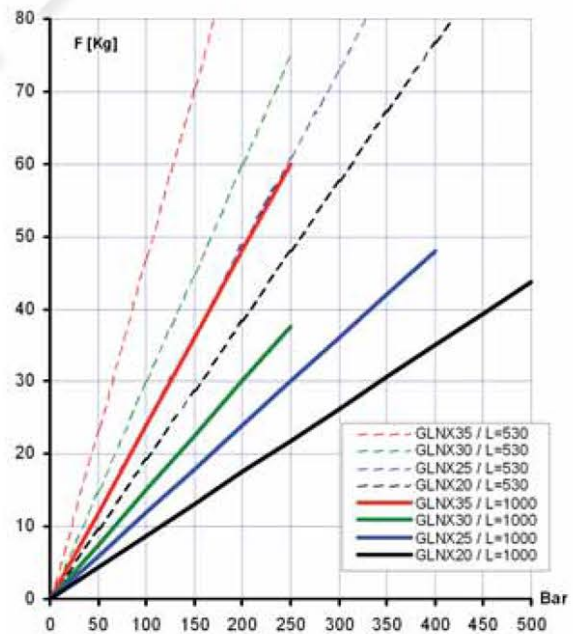
Hydraulic Hand Pumps - Foot Pedal Pumps
Air-Hydraulic Pumps - Accessories

Hydraulic Hand Pump Type GLNX (20-35)

Double stroke function for single acting cylinder

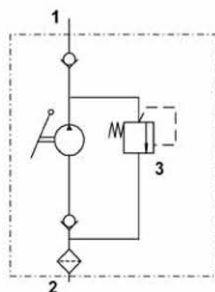


| TYPE | DELIVERY Cc | PRESSURE Bar |
|--------|-------------|--------------|
| GLNX20 | 17 | 400 |
| GLNX25 | 27 | 300 |
| GLNX30 | 39 | 200 |
| GLNX35 | 52 | 150 |



Mounting:

Any position.



Weight Kg. ~ 3.1 - 3.4

- 1 Pressure port 3/8"G bspp
- 2 Suction 1/2"G bspp
- 3 Relief Valve

Dimensions and characteristics not binding. Modifications reserved without prior notice.