

Part number:

HYDROMA

HYDRAULICKÉ SYSTÉMY

**HIDROMA
SISTEMS**

UKŁADY HYDRAULICZNE

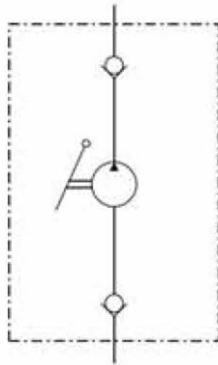
HYDROMA

ГИДРАВЛИЧЕСКИЕ СИСТЕМЫ

Hydraulic Hand Pumps - Foot Pedal Pumps
Air-Hydraulic Pumps - Accessories

Hydraulic Hand Pump Type GL (20-45)

Double stroke function



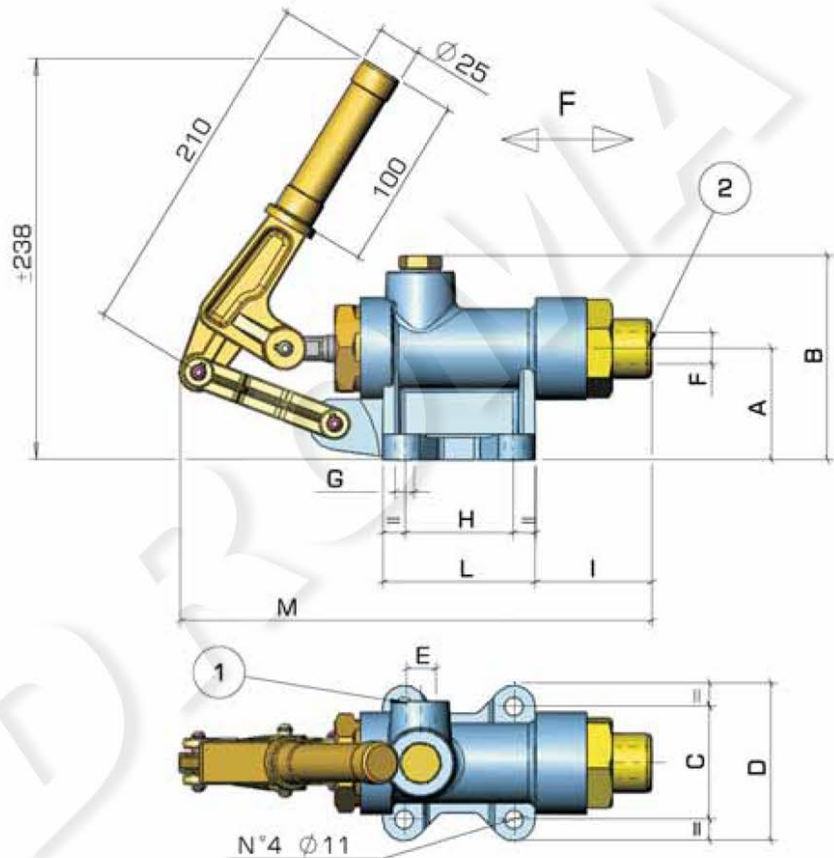
Weight Kg. ~ 5,3 - 6,5

1 Pressure port
2 Suction



Mounting :

Any position.



TYPE	A	B	C	D	E	F	G	H	I	L	M
GL 20-25-28-30-35	67	120	66	95	3/8" gas	1/2" gas	11	63	68	89	285
GL 40-45	71	137	71	102	1/2" gas	1/2" gas	11	73	71	104	295

TYPE	DELIVERY Cc	PRESSURE Bar
GL 20	18	460
GL 25*	29	320
GL 28	36	250
GL 30	42	220
GL 35*	57	160
GL 40*	87	120
GL 45	111	90

* Authorized by the Italian Ministry of Mercantile Marine with Nr. 47/1988 and 48/1988.

* Authorized Italian Navy Register (RINA) nr. 17874.

Dimensions and characteristics not binding. Modifications reserved without prior notice.