

Part number:

**HYDROMA**

HYDRAULICKÉ SYSTÉMY

**HIDROMA  
SISTEMS**

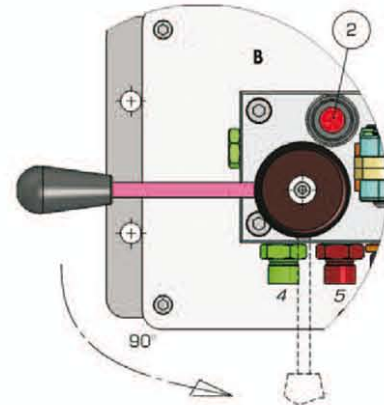
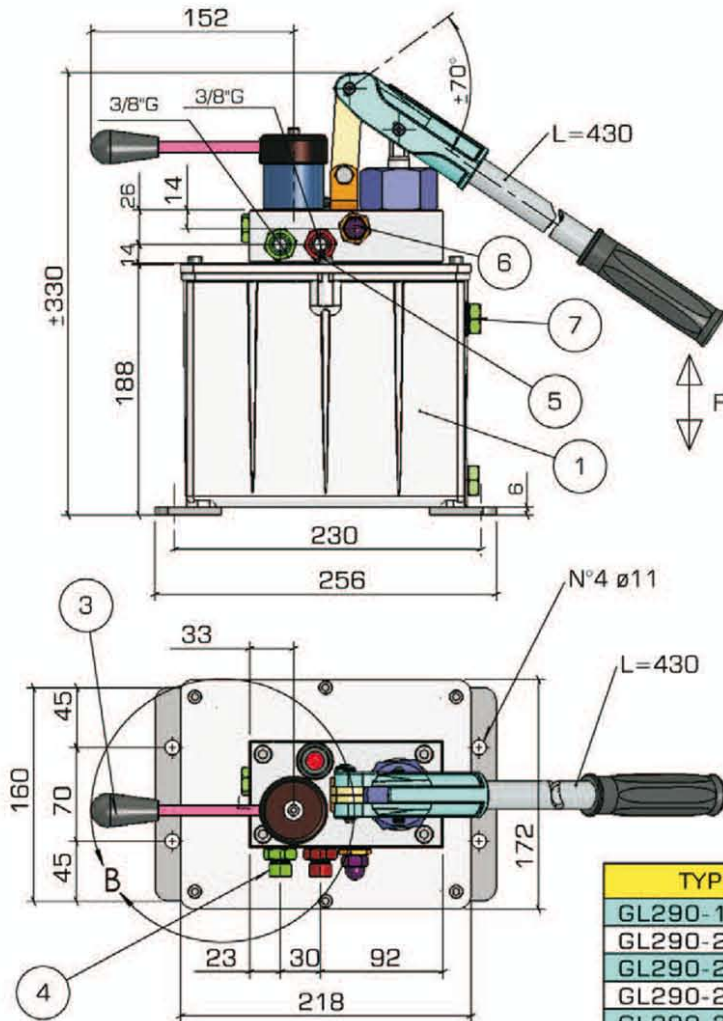
UKŁADY HYDRAULICZNE

**HYDROMA**

ГИДРАВЛИЧЕСКИЕ СИСТЕМЫ

## Hydraulic Hand Pump Type GL 290 4L

Double stroke function with flow diverter for double acting cylinder

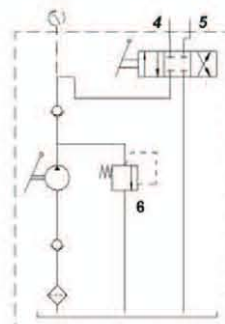
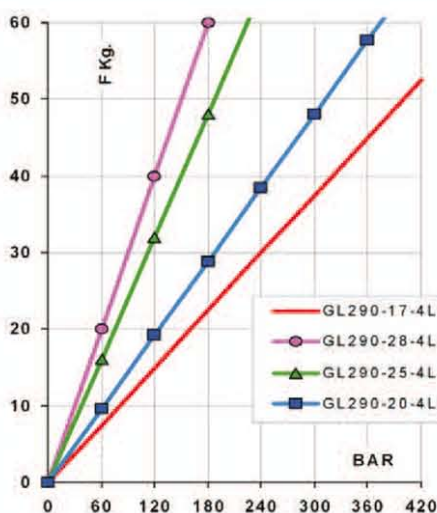


Materials:  
- Aluminium pump head and tank

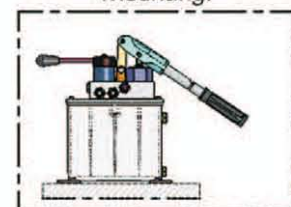
TYPE	DELIVERY cm <sup>3</sup>	PRESSURE Bar
GL290-17-4L	11	380
GL290-20-4L	16	280
GL290-25-4L	25	180
GL290-28-4L	32	150
GL290-35-4L	40	100

Weight Kg. ~8,5-9

- 1 Tank L 4
- 2 Filler Plug 1/2" g
- 3 Oil Flow Diverter Lever
- 4 Male Pressure Port 1
- 5 Male Pressure Port 2
- 6 Relief Valve
- 7 Oil Level



Mounting:



Dimensions and characteristics not binding. Modifications reserved without prior notice.