

Part number:

HYDROMA

HYDRAULICKÉ SYSTÉMY

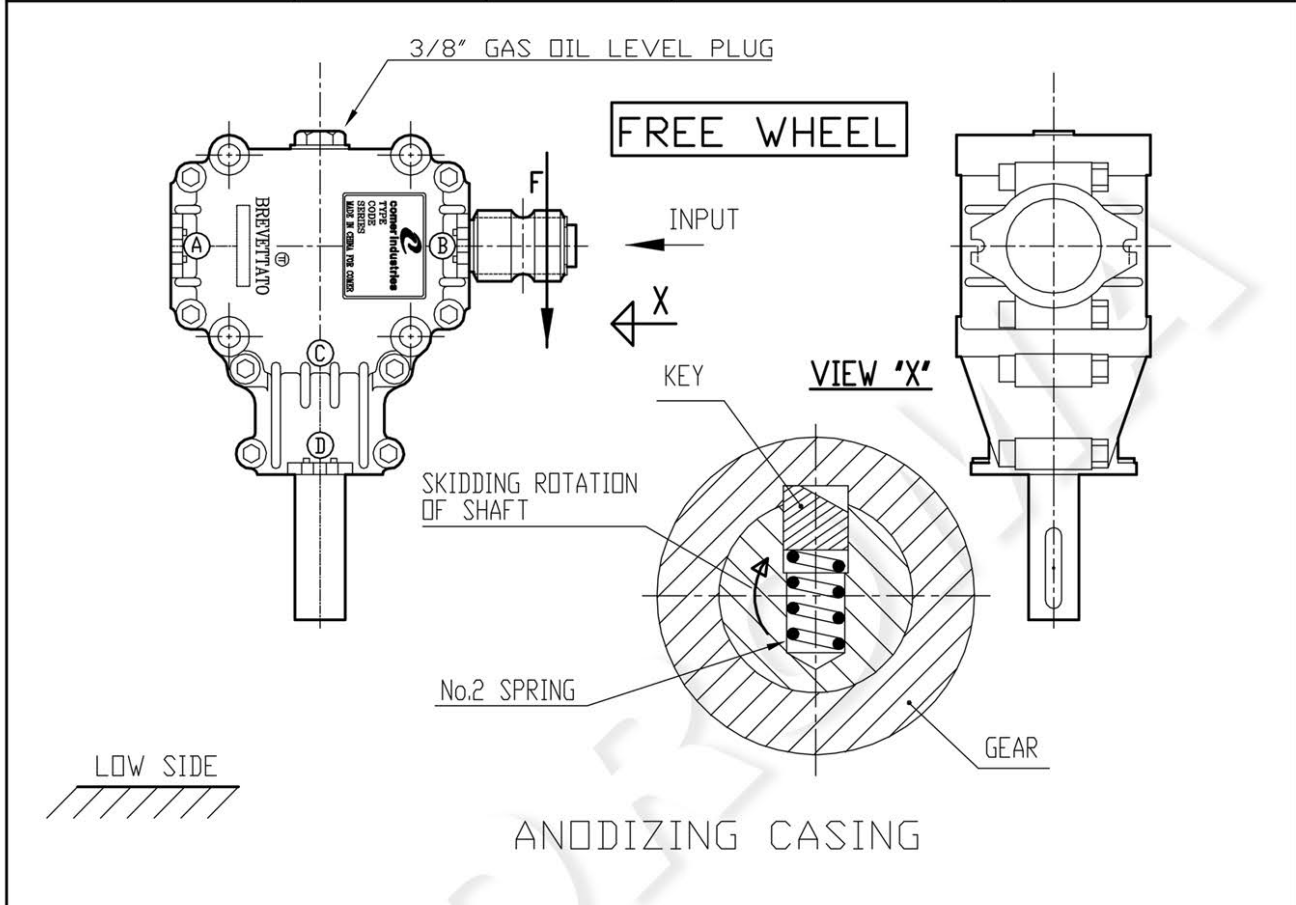
**HIDROMA
SYSTEMS**

UKŁADY HYDRAULICZNE

HYDROMA

ГИДРАВЛИЧЕСКИЕ СИСТЕМЫ

RIF. -		COMPANY: -		INDEX	COM. N°
				01	009.535
RATIO	FIG. MONT.	COD.LETT.	L-25J	CODE	
1 : 3	23-24	COD.NUM.	124	9.124.879.00	

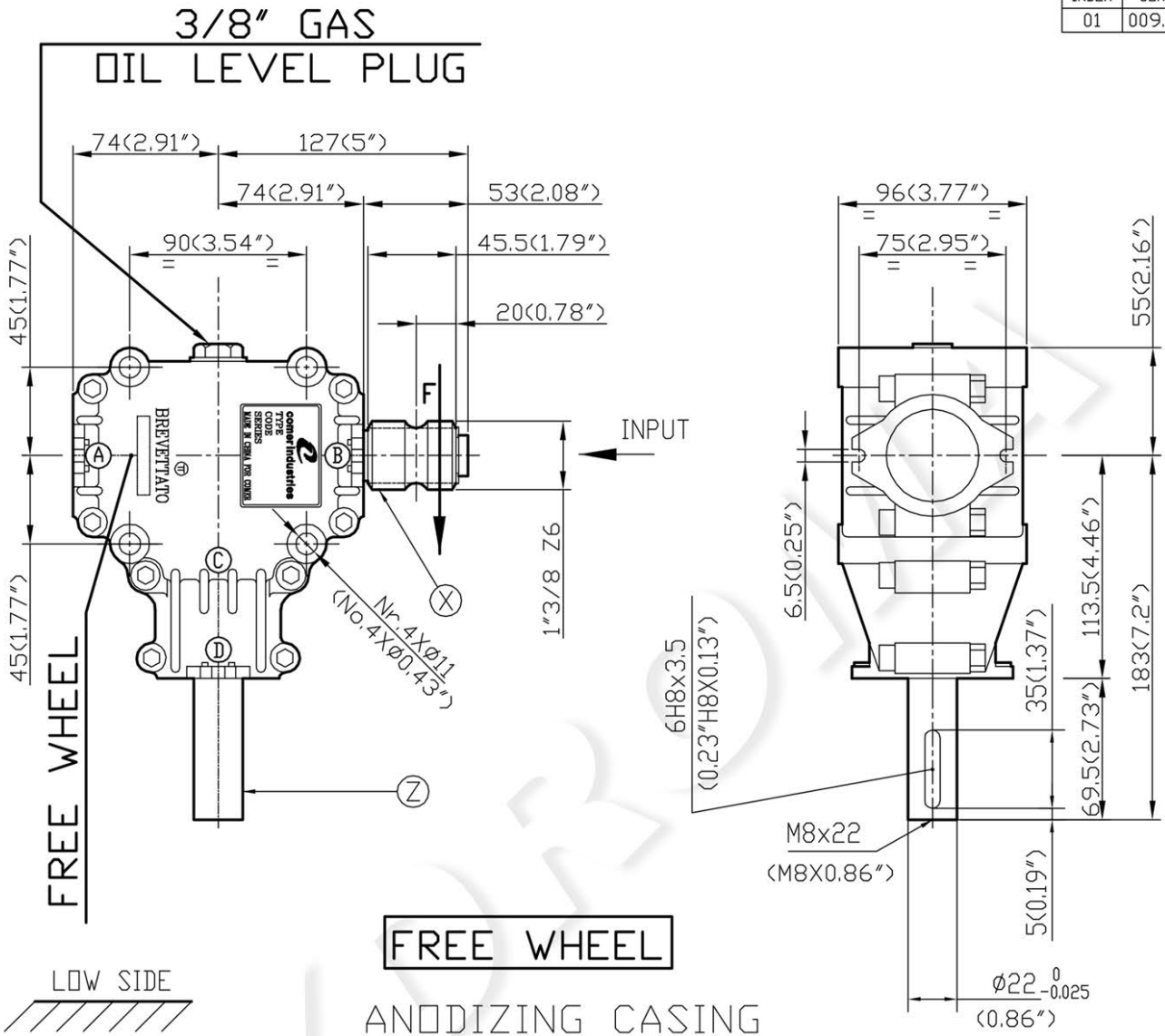


NOTE DI MONTAGGIO	ASSEMBLY NOTES	
<ul style="list-style-type: none"> - GIOCO DI INGRANAMENTO - GIOCO ASSIALE DI U. - GIOCO ASSIALE DI E. - SERRAGGIO VITI SCATOLA . - SILICONE TRA LE DUE SEMISCATOLE . - INGRASSARE IL CUSCIN. E L'ANELLO DI TENUTA POS. "B" CON GRASSO "NLGI Nr.2" (COD.8.8.7.00436) . - IL TIPO E LA QUANTITA' DEGLI SPESSORI DI REGISTRAZIONE INDICATI IN DISTINTA DEVONO ESSERE ASSOLUTAMENTE E TASSATIVAMENTE MANTENUTI - LA FRECCIA "F" INDICA LA ROTAZIONE DI LAVORO DELL'ALBERO (SI HA QUINDI LO SLITTAMENTO CON ROTAZIONE OPPOSTA) . - AGGIUNGERE CON PENNELLO UN SOTTILE STRATO DI MOLYKOTE TIPO GN/PLUS COD. 8.8.9.02185 SUL Ø INTERNO DELL' INGRANAGGIO E SUL Ø ESTERNO DELL'ALBERO, TRALASCIANDO LA CAVA LINGUETTA. 	<ul style="list-style-type: none"> - GEARS BACKLASH - OUTPUT SHAFT AXIAL CLEARANCE - INPUT SHAFT AXIAL CLEARANCE - TIGHTENING HOUSING BOLTS , - APPLY SILICONE SEALANT BETWEEN GEARBOX HOUSING , - APPLY GREASE TYPE "NLGI" GRADE 2 (COD. 8.8.7.00436) BETWEEN BEARING AND OIL SEAL IN POS. "B" . - TYPE AND QUANTITY OF SHIM MUST BE MAINTAINED PEREMPTORY AS INDICATED IN TO ASSEMBLY NOTES , - THE ARROW "F" INDICATES THE WORK ROTATION OF SHAFT(SU THE SKIDDING IS WITH OPPOSED ROTATION) . - APPLY A SMALL LAYER OF MOLYKOTE TYPE "GN/PLUS" CODE 8.8.9.02185 WITH BRUSH ON INSIDE DIA. OF GEAR AND ON OUTSIDE DIA. OF SHAFT. DON'T APPLY MOLYKOTE ON KEY SEAT. 	<p>0.1 ÷ 0.25 mm.</p> <p>0 ÷ 0.2 mm.</p> <p>0 ÷ 0.2 mm.</p> <p>2.47 ÷ 3.17 Kgm.</p> <p>POS.-11-AND-12-</p>

THEORETICAL SHIMS: (A) 0.5 mm (B) 0.5 mm DN Ø25 (C) 0.7 mm (D) 0.1 BACKLASH

COMPANY -	REF. -	DESIGNATION L-25A
	DATE 10/jul/03	CODE 9.124.879.00

INDEX 01	COM. N° 009.535
-------------	--------------------



SPEED INCREASING UNIT	Ratio	Rated input		Rated input power		Rated output torque	Weight	Lubricant										
	i	r.p.m.	HP	kW		da Nm	Kg	Oil Type	Grease Quantity Lt.									
	1 : 3	540	7	5		3	4.2	<input type="checkbox"/>	<input type="checkbox"/>									
		Gear Arrangement				Bevel couplings				Cylindrical couplings				Bearings				
		Helicoidal	Straight	Teeth number				Module	Helicoidal	Straight	Teeth number				Module	A	6205	
				Z 1	Z 2	Z 3	Z 4				M.	Z 1	Z 2	Z 3		Z 4	M.	B
				9	27			3.24									C	6205
																	D	6205
	Components material																	
	Casing		Shaft X		Shaft Z		Bevel gear		Spur gear									
SGALSI 2/GD 5076		AISI 3120		AISI 3120		AISI 3120												

COMER INDUSTRIES reserves the right to make any change to this product without prior public acknowledgement

COMER INDUSTRIES S.p.A. 42046 Villanova di Reggiolo (R.E.) Italia Tel. 0522\974111 (9 Linee) Telefax 0522\973249

	RIF. ,	COMPANY: -			INDEX	COM. N°
					01	009.535
	RATIO	FIG. MONT.	COD.LETT.	L-25J	CODE	
1 : 3	23 - 24	COD.NUM.	124	9.124.879.00		

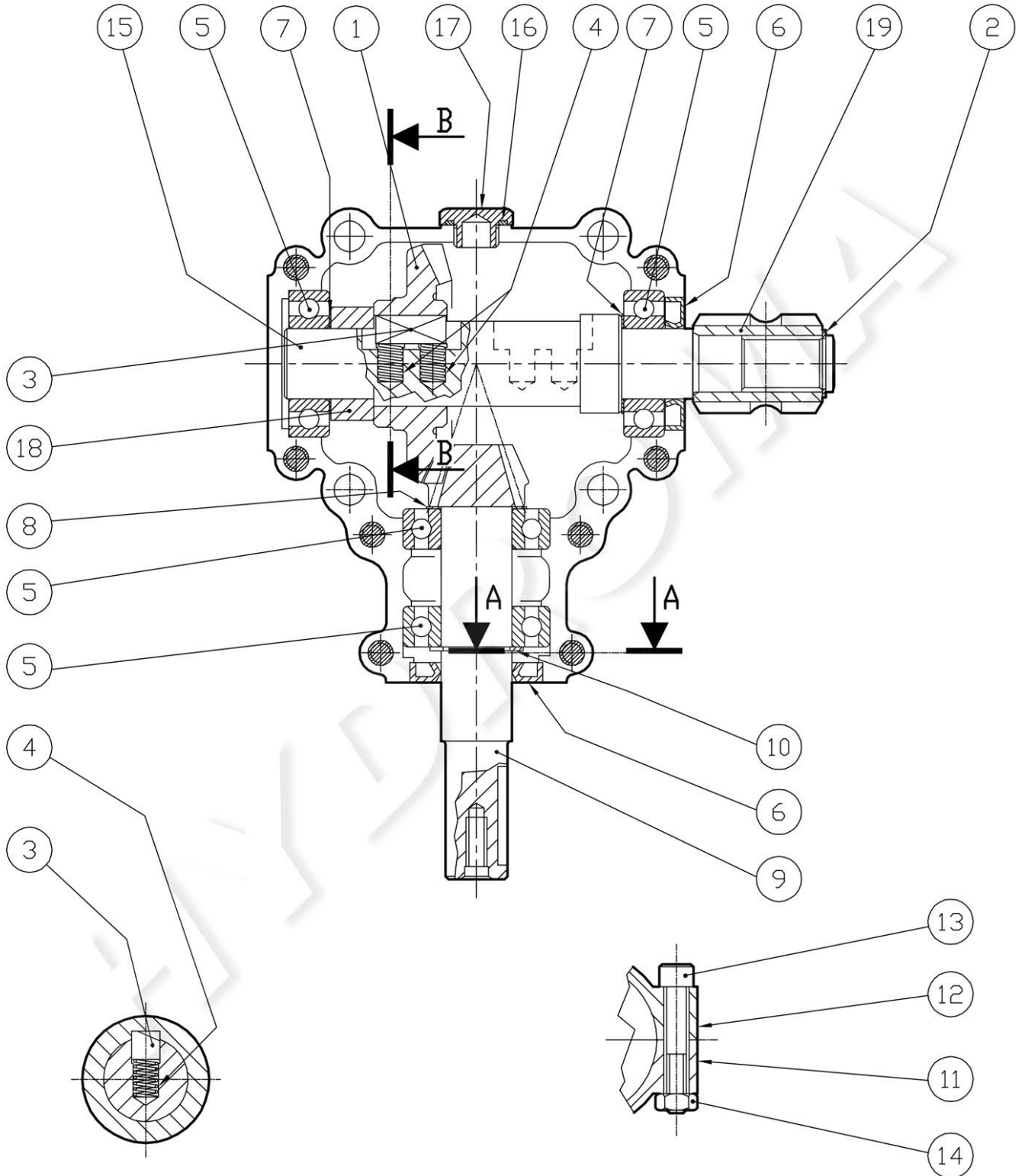
POS.	DRG. Nr.	PCS.	DESCRIPTION
1	0.104.6004.00	1	CROWN Z27 M3.24
2	8.5.1.01023	1	SNAP RING (19X18X1.2 , FOR SHAFTS)
3	0.104.7010.00	1	KEY WAY FREE -WHEEL (10X10X25)
4	0.104.7009.00	2	SPRING
5	8.0.1.00034	4	BALL BEARING 6205 (25X52X15)
6	8.7.3.00257	2	OIL SEAL (25X47X7)
7	0.100.7505.00	2	SHIM (25.6X35.3X0.5)
8	0.100.7507.00	1	SHIM (25.6X35.3X0.7)
9	0.104.5251.00	1	PINION Z9 M3.24
10	8.5.1.00004	1	SNAP RING (25X23.9X1.2 , FOR SHAFTS)
11	0.124.0314.00	1	ANODIZING CASING
12	0.124.0320.00	1	ANODIZING CASING
13	8.1.2.00984	8	BOLT T.C.E.I. UNI5931 M8X45 GALVANIZED 8,8
14	8.2.1.00985	8	NUT UNI 5588 M8 GALVANIZED 8
15	0.124.3223.00	1	INPUT SHAFT PROFILE 20X17 DIN 5482
16	8.7.6.00636	1	□ - RING OR - 3068
17	0.124.7102.00	1	3/8" GAS OIL LEVEL PLUG
18	0.124.7125.00	1	SPACER (25.1X40X15.2)
19	0.124.7007.00	1	1" 3/8 Z6 BUSHING

SHIPPED SEPARATELY

POS.	DRG. Nr.	PCS.	DESCRIPTION

COMPANY -	REF. -	DESIGNATION L-25J
	DATE 10/jul/03	CODE 9.124.879.00

INDEX 01	COM. N° 009.535
-------------	--------------------



SEC. B - B

SEC. A - A