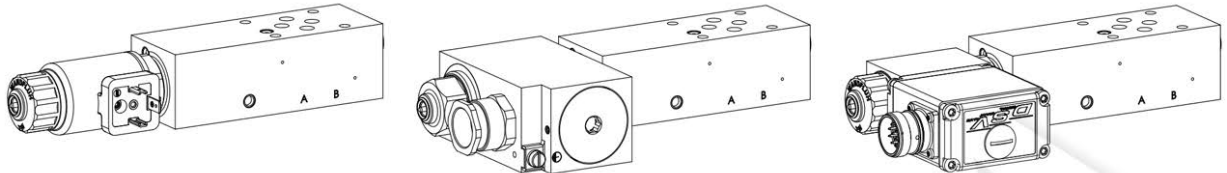


Part number:

*Proportional
pressure reducing valves*

Proportional pressure reducing valve
Flange and sandwich construction
• $p_{max} = 400 \text{ bar}$

NG6
ISO 4401-03



DESCRIPTION

Pilot operated proportional pressure reducing valves NG6. Flange and sandwich construction according to ISO 4401-03 with 4 ports. Incorporated are proportional pressure reducing cartridges size M22x1,5 according to ISO 7789. The steel bodies for flange constructions are painted with a two component painting and the bodies for sandwich constructions are phosphatized.

FUNCTION

By adjusting the electric current to the proportional solenoid the pressure in the controlled port will be changed proportionally to the solenoid current. A pressure rise in the controlled port above the adjusted value, caused e.g. by an active oil consumer, will be prevented by relieving excessive flow to the tank line T. This proportional pressure reducing valves are adjustable very sensitively. To control the valve proportional amplifiers are available from Wandfluh (see register 1.13).

APPLICATION

The valves have their applications in hydraulic systems in which the pressure in a consumer has to remain constant at the adjusted value independently of pressure fluctuations on the supply side. The facility for remote control and signal processing from process control systems enable economical solutions to problems with repeatable sequences.

TYPE CODE

M A06 - - #

Pressure reducing valve

2nd and 3rd digit position of the designation of the built-in cartridge

Flange construction

F

Sandwich construction

S

International standard interface ISO, NG6

Type list / Function

flange construction

sandwich construction

P → A

P/A

in P

P

in A

A

in B

B

Nominal pressure range, nominal voltage, etc., of the built-in cartridge

Design-Index (Subject to change)

Examples: M V P F A06 - P/A - 100 - G24 / WD - D1
M V B S A06 - A - 200 - G12 / L15 / IN
M Q P S A06 - B - 350 - G24 / MEA1 - HB0

GENERAL SPECIFICATIONS

Description	Pilot operated proportional pressure reducing valve
Nominal size	NG6 according to ISO 4401-03
Constructions	Flange or sandwich
Operations	Proportional solenoid
Mounting	4 fixing holes for socket head cap screws M5 or studs M5
Connections	Threaded connection plates Multi-flange subplates Longitudinal stacking system
Weight:	• Flange type m = 1,64 kg
(without screw-in cartridge)	• Sandwich type P m = 1,41 kg
	• Sandwich type A, B m = 1,78 kg

SCREW-IN CARTRIDGES INSTALLED

The following screw-in cartridges are used in either the flange body or the sandwich body:

Type	Designation	Data sheet no.	Q _{max} *
MVPPM22	pilot operated	2.3-629	60 l/min
MQPPM22	pilot operated from connection P	2.3-641	40 l/min
MVBPM22	pilot operated, explosion proof Ex d	2.3-635	60 l/min
MVPPM22-.../ME	pilot operated, with integr. electronics	2.3-632	60 l/min
MQPPM22-.../ME	pilot operated from connection P, with integrated electronics	2.3-643	40 l/min



REMARK!

Detailed performance data and additional hydraulic and electric specifications may be drawn from the data sheets of the corresponding installed screw-in cartridge.



CAUTION!

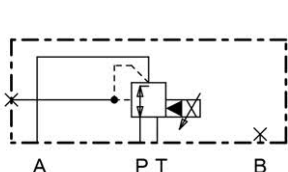
The performance data especially the «**pressure-flow-characteristic**» on the data sheets of the screw-in cartridges refer to the screw-in cartridges only. The additional pressure drop of the flange body respectively sandwich body must be taken into consideration.

* Can deviate from the values on the data sheets of the screw-in cartridges.
** Do not use anymore for new applications.

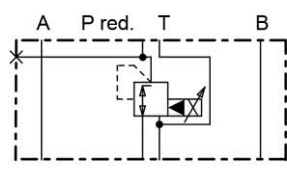
TYPE LIST / FUNCTION

Flange construction:

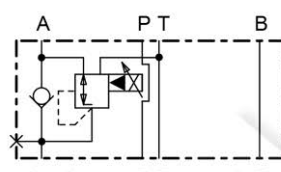
Sandwich construction:



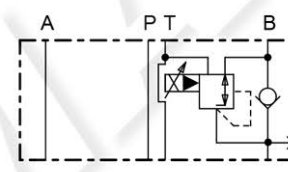
MV.FA06-P/A



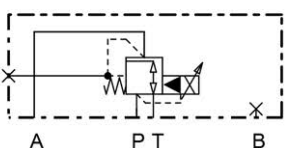
MV.SA06 - P



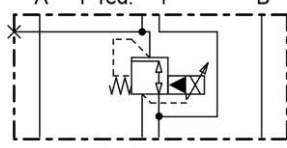
MV.SA06 - A



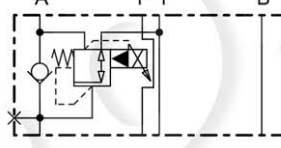
MV.SA06 - B



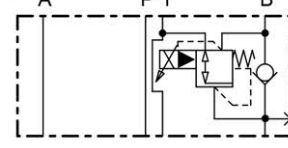
MQ.FA06-P/A



MQ.SA06 - P



MQ.SA06 - A

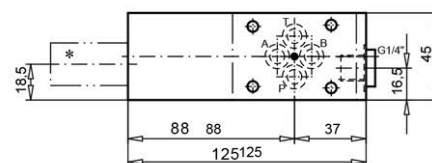
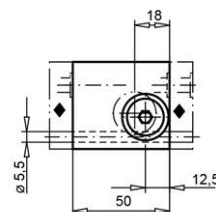
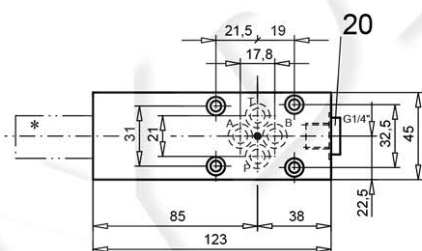
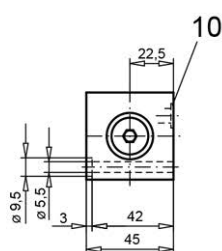


MQ.SA06 - B

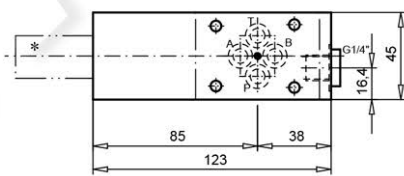
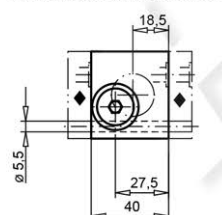
DIMENSIONS

Flange construction

Sandwich construction in A or B



Sandwich construction in P



For sandwich red. pressure in B cartridge is located on B-side.

* The envelop dimensions of the screw-in cartridge are shown on their corresponding data sheets.

◆ Distance plate ADP6/... must be ordered separately.

PARTS LIST

Position	Article	Description
10	160.2093	O-ring ID 9,25 x 1,78 (NBR)
20	238.2406	Plug VSTI G1/4"-ED

ACCESSORIES

Proportional amplifier	register 1.13
Distance plate ADP6/12 (12 mm)	art. no. 173.3451
Distance plate ADP6/30 (30 mm)	art. no. 173.3453
Distance plate ADP6/46 (46 mm)	art. no. 173.3454
Distance plate ADP6/87 (87 mm)	art. no. 173.3461

Technical explanation see data sheet 1.0-100