

Part number:

HYDROMA

HYDRAULICKÉ SYSTÉMY

**HIDROMA
SYSTEMS**

UKŁADY HYDRAULICZNE

HYDROMA

ГИДРАВЛИЧЕСКИЕ СИСТЕМЫ

Inlet Elements with Primary Pressure Relief Valve

TE-01-__-



Technical data

General			
Inlet Element Type		AL Version	CI Version
TE-01-02-00-	kg (lbs)	0.31 (0.67)	Not Available
TE-01-03-00-	kg (lbs)	0.49 (1.08)	1.23 (2.72)
TE-01-56-00-	kg (lbs)	0.49 (1.08)	Not Available
TE-01-02-S_-	kg (lbs)	0.44 (0.96)	Not Available
TE-01-03-S_-	kg (lbs)	0.66 (1.45)	1.36 (3.00)
TE-01-56-S_-	kg (lbs)	0.66 (1.45)	Not Available
Ambient Temperature	°C (°F)	-20....+50 (-4....+122) (NBR seals)	
Hydraulic			
Maximum pressure for aluminium version (AL)	bar (psi)	250 (3625)	
Maximum pressure for Cast Iron version (CI)	bar (psi)	310 (4500)	
Maximum inlet flow	l/min (gpm)	50 (13.2)	
Hydraulic fluid		Mineral oil based hydraulic fluids HL (DIN 51524 part 1).	
General properties: it must have physical lubricating and chemical properties suitable for use in hydraulic systems such as, for example:		Mineral oil based hydraulic fluids HLP (DIN 51524 part 2). For use of environmentally acceptable fluids (vegetable or polyglycol base) please consult us.	
Fluid Temperature	°C (°F)	-20....+80 (-4....+176) (NBR)	
Permissible degree of fluid contamination		ISO 4572: $\beta_{x \geq 75} X = 10 \dots 12$ ISO 4406: class 19/17/14 NAS 1638: class 8	
Viscosity range	mm ² /s	5....420	

Note

For applications with different specifications consult us

Ordering details

01	02	03	04	05
TE	-	01	-	

Family

01	Inlet Elements	TE
----	----------------	-----------

Configuration

02	With Primary Pressure Relief Valve	01
----	------------------------------------	-----------

Ports

03	G 3/8 DIN 3852	02
	G 1/2 DIN 3852	03
	3/4-16 UNF-2B (SAE8)	56

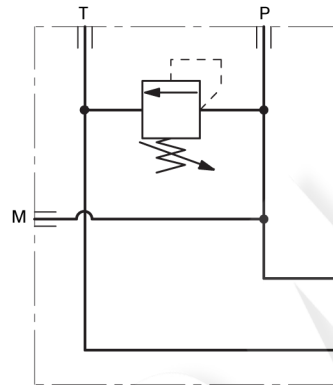
Primary Pressure Relief range

04	Cavity without primary pressure relief valve (to be ordered separately)	00
	Pressure range 25-120bar (362-1740 psi)	SN
	Pressure range 40-200bar (580-2900 psi)	SB
	Pressure range 200-350bar (2900-5076 psi)	SV

Material

05	Cast Iron ¹⁾	CI
	Aluminium	AL

Symbol



1) Only available for versions with G 1/2 ports (TE-01-03-...)

