

Part number:

**HYDROMA**

HYDRAULICKÉ SYSTÉMY

**HIDROMA  
SYSTEMS**

UKŁADY HYDRAULICZNE

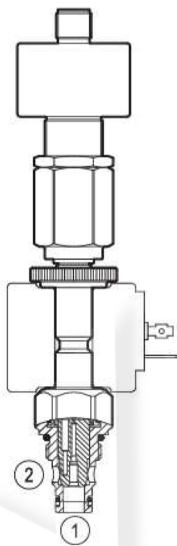
**HYDROMA**

ГИДРАВЛИЧЕСКИЕ СИСТЕМЫ

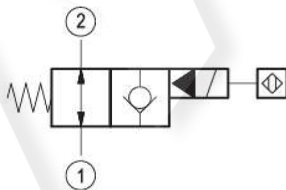
Solenoid operated valves pilot operated poppet type  
2-way normally open proximity sensor  
Common cavity, Size 08

VEI-8A-2A-06-NA-S-M-NSS

OD.15.06.18.2D.S2 - Z



▼ Version 06



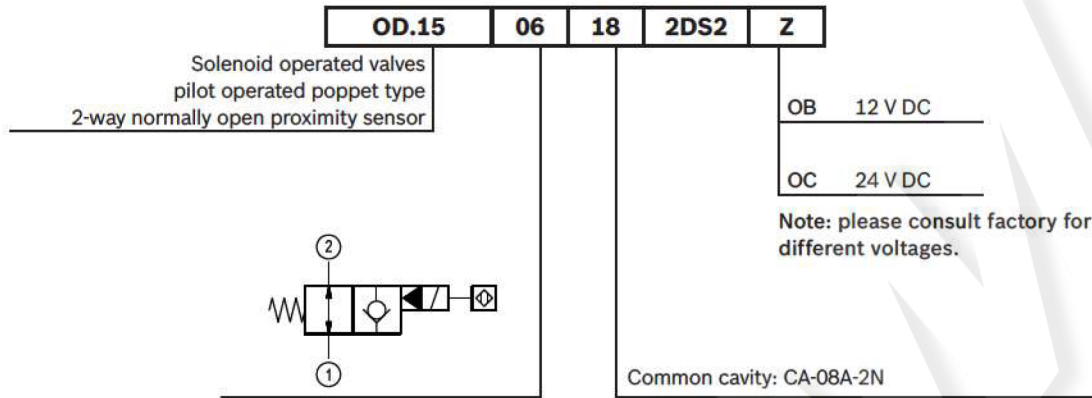
**Technical data**

General		
Weight		0.75 kg (1.65 lbs)
Installation orientation		Optional
Ambient temperature range		-25 to 60 °C (-13 to 140 °F)
Hydraulic		
Max. operating pressure		350 bar (5000 psi)
Flow range		2.5 - 40 l/min (0.66 - 11 gpm)
Max. internal leakage		15 drops/min.
Fluid temperature range		-20 to 80 °C (-4 to 176 °F)
Fluids: Mineral-based or synthetics with lubricating properties at viscosities of 15 to 380 mm <sup>2</sup> /s (cSt)		
Installation torque		30 - 35 Nm (22 - 26 ft-lbs)
Recommended degree of fluid contamination		Nominal value max. 10 µm (NAS 8) ISO 4406 19/17/14
MTTFd		150 years see RE 18350-51
Cavity		CA-08A-2N see 18325-70
Lines bodies and standard assemblies		Please refer to section "Hydraulic integrated circuit" or consult factory
Seal kit – version 06	code	RG08A2010520100
	material no.	R930001696
Other technical data		See data sheet 18350-50
Electrical		
Type of voltage		DC voltage
Coil type		S8-356 see 18325-90
Supply voltage		See data sheet 18325-90
Nominal voltage		± 10%
Power consumption		20 W
Duty cycle coil		100 % see 18325-90
Type of protection		See data sheet 18325-90

Please consider that a proper function of the valve is guaranteed only if the position of the monitor is not modified; each cartridge is provided of a torque confirmation mark, intended as anti-tampering device.

Sensor is protected against short circuit polarity inversion.

Ordering code

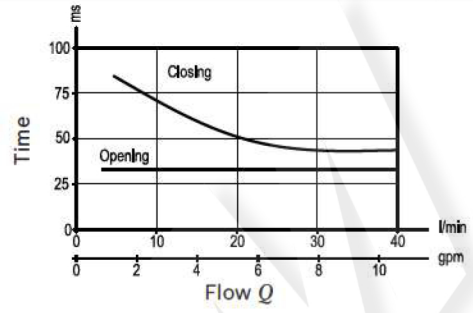
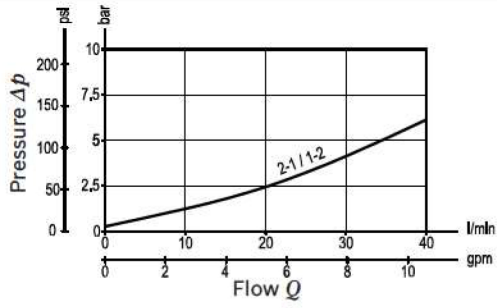


Type	Material number
OD1506182DS2OB	R934004821
OD1506182DS2OC	R934005243

Type	Material number

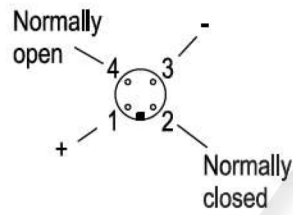
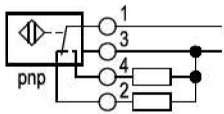
**Characteristic curves**

**Version 06**



**Sensor data:**

	12 V DC	24 V DC
Supply voltage	10.5 to 16	20 to 32
Output load	$\leq 400$ mA	$\leq 400$ mA



**Dimensions**

- ▼ Version 06: Solenoid operated valve, poppet 2-way normally open proximity sensor

