

Part number:

020-10080

HYDROMA

HYDRAULICKÉ SYSTÉMY

**HIDROMA
SYSTEMS**

UKŁADY HYDRAULICZNE

HYDROMA

ГИДРАВЛИЧЕСКИЕ СИСТЕМЫ

Tipo / Type

FPESM-6P-*.*

Sez./Section

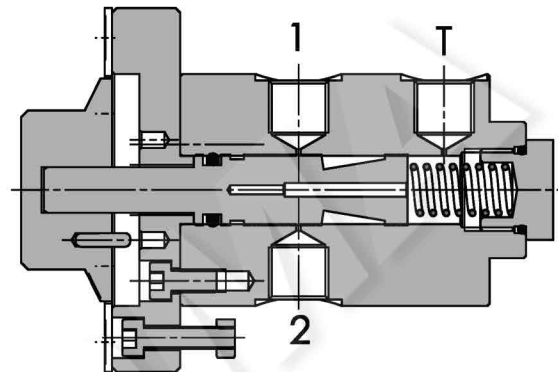
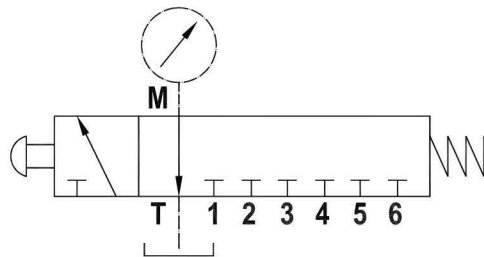
V

Pag./Page

020/1

**Selettore per manometro a 6 vie
6 way pressure-gauge selector**

Rev.01-2010/02



SPECIFICHE TECNICHE

Materiali: corpo e parti interne sono in acciaio. La superficie esterna è protetta mediante zincatura.

Pressione max.: 315 bar

Connessioni: 1/8" - 1/4"

Peso: 1,280 Kg

TECHNICAL SPECIFICATIONS

Materials: body and internal parts are steel made, external surface is zinc plated.

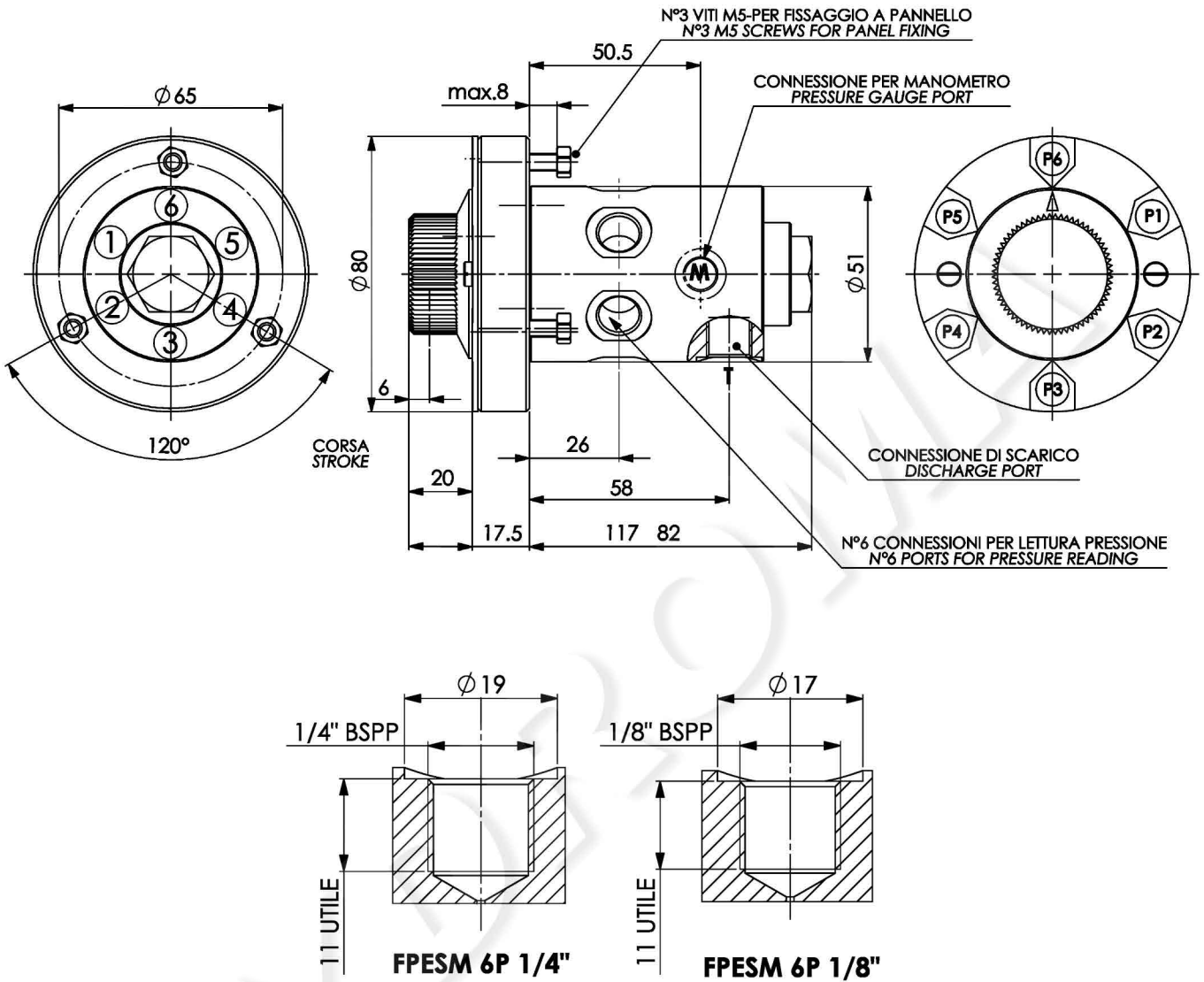
Max. pressure: 315 bar

Ports: 1/8" - 1/4"

Weight: 1,280 Kg

Selettore per manometro a 6 vie
6 way pressure-gauge selector

Rev.01-2010/02



ESEMPIO DI ORDINAZIONE - ORDERING CODE EXAMPLE

F P E S M 6 P 1 / 4 *

1/8 - 1/8" BSPP
 * 1/4 - 1/4" BSPP
 Connessioni - Port sizes

Guarnizioni - Seals:
 V=Viton *
 Omettere se BUNA-N - Omit if BUNA-N