

Part number:

HYDROMA

HYDRAULICKÉ SYSTÉMY

**HIDROMA
SYSTEMS**

UKŁADY HYDRAULICZNE

HYDROMA


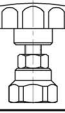
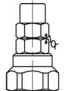
ГИДРАВЛИЧЕСКИЕ СИСТЕМЫ

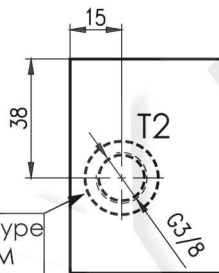
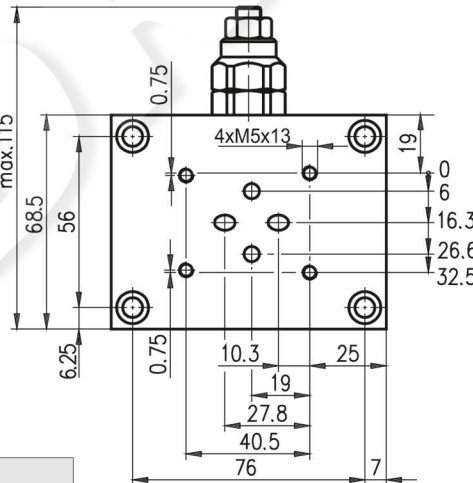
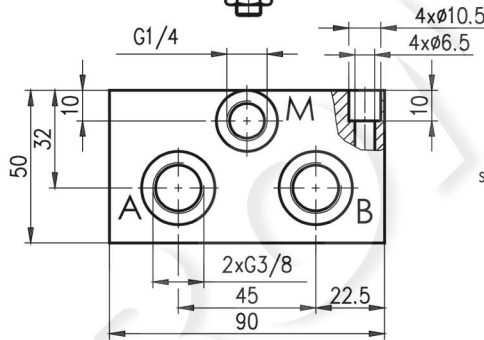
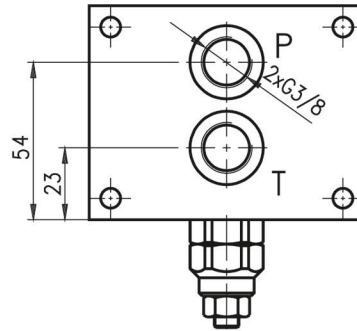
VALVE BLOCKS

BPC3/

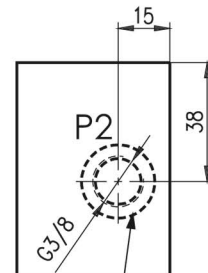


All performances and calibration are carried out by using hydraulic oil with viscosity approx. 32 cSt at 50°C
Temperature range: -20 °C...+80°C.
Filtration absolute: 25 µm

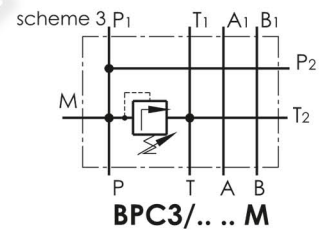
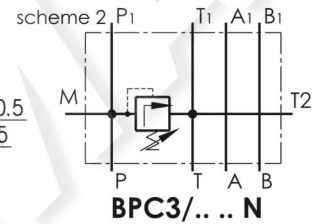
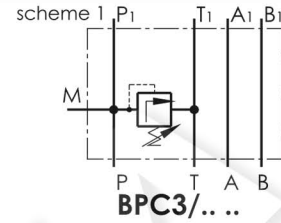
Code	Adjustment
A	Leakproof hex. socket screw 
B	Handknob and locknut 
C	Sealing cap 



Only for type
BPC3/....M
BPC3/....N



Only for type
BPC3/....M



Pressure range

Code	Standard setting bar (Q=5l/min)	Adj. pressure range bar	Colour
10	80	10...100	White
25	180	30...250	Yellow
35	250	70...350	Black

Type	P _{max.} bar	Q _{max.} L/min
BPC3/... ..	350	40

ORDERING CODE

BPC3 / 25 A M

Type

Pressure range code: **10,25,35**

Adjustment code: **A,B,C**

Scheme - code:
scheme 1 - **Omit**
scheme 2 - **N**
scheme 3 - **M**