

Part number:

**HYDROMA**

HYDRAULICKÉ SYSTÉMY

**HIDROMA  
SYSTEMS**

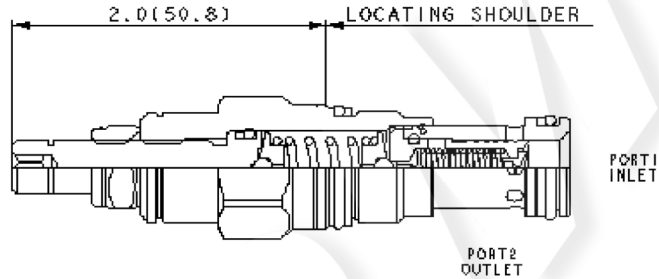
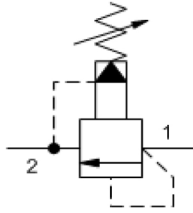
UKŁADY HYDRAULICZNE

**HYDROMA**

ГИДРАВЛИЧЕСКИЕ СИСТЕМЫ

MODEL  
**RPEC**

Pilot-operated, balanced piston relief valve  
**SERIES 1 / CAPACITY: 95 L/min. / CAVITY: T-10A**



**CONFIGURATION**

L	Control	Standard Screw Adjustment
B	Adjustment Range	50 - 1500 psi (3,5 - 105 bar), 1000 psi (70 bar) Standard Setting
N	Seal Material	Buna-N
(none)	Material/Coating	Standard Material/Coating

Pilot-operated, balanced-piston relief cartridges are normally closed pressure regulating valves. When the pressure at the inlet (port 1) reaches the valve setting, the valve starts to open to tank (port 2), throttling flow to regulate the pressure. These valves are accurate, have low pressure rise vs. flow, they are smooth and quiet, and are moderately fast.

**TECHNICAL DATA**

NOTE: DATA MAY VARY BY CONFIGURATION. SEE CONFIGURATION SECTION.

Factory Pressure Settings Established at	15 L/min.
Maximum Operating Pressure	350 bar
Maximum Valve Leakage at 110 SUS (24 cSt)	30 cc/min.@70 bar
Response Time - Typical	10 ms
Adjustment - No. of CW Turns from Min. to Max. setting	5
Locknut Hex Size	15 mm
Locknut Torque	9 - 10 Nm
Seal kit - Cartridge	Buna: 990010007
Seal kit - Cartridge	EPDM: 990010014
Seal kit - Cartridge	Polyurethane: 990010002
Seal kit - Cartridge	Viton: 990010006

**NOTES** For Series 1 cartridges configured with an O control (panel mount handknob), a .75 in. (19 mm) diameter hole is required in the panel.

**CONFIGURATION OPTIONS**

Model Code Example: RPECLBN

CONTROL	(L) ADJUSTMENT RANGE	(B) SEAL MATERIAL	(N) MATERIAL/COATING
L Standard Screw Adjustment	B 50 - 1500 psi (3,5 - 105 bar), 1000 psi (70 bar) Standard Setting	N Buna-N	Standard Material/Coating
C Tamper Resistant - Factory Set	A 100 - 3000 psi (7 - 210 bar), 1000 psi (70 bar) Standard Setting	E EPDM	/AP Stainless Steel, Passivated
K Handknob	W 150 - 4500 psi (10,5 - 315 bar), 1000 psi (70 bar) Standard Setting	V Viton	/LH Mild Steel, Zinc-Nickel
O Handknob with Panel Mount	C 150 - 6000 psi (10,5 - 420 bar), 1000 psi (70 bar) Standard Setting		
W Hex Wrench Adjustment	N 60 - 800 psi (4 - 55 bar), 400 psi (28 bar) Standard Setting		
Y Tri-Grip Handknob	Q 60 - 400 psi (4 - 28 bar), 200 psi (14 bar) Standard Setting		