

Part number:

**HYDROMA**

HYDRAULICKÉ SYSTÉMY

**HIDROMA  
SYSTEMS**

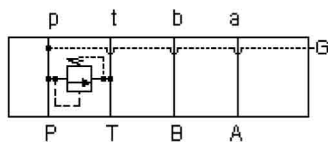
UKŁADY HYDRAULICZNE

**HYDROMA**

ГИДРАВЛИЧЕСКИЕ СИСТЕМЫ

MODEL  
**FSU**

P to T, side ports  
**CAVITY: T-10A**



Relief P to T

#### TECHNICAL DATA

Body Type	Subplate
Interface	ISO 03
Body Features	P to T, side ports
Mounting Hole Diameter	.28 in.
Mounting Hole Depth	Through
Mounting Hole Quantity	4

**NOTES** *Important:* Carefully consider the maximum system pressure. The pressure rating of the manifold is dependent on the manifold material, with the port type/size a secondary consideration. Manifolds constructed of aluminum are not rated for pressures higher than 3000 psi (210 bar), regardless of the port type/size specified.

#### PORT DESIGNATORS

Modifiers	Ports
FSU	Ports A, B, P, T: 3/8" BSPP; Gage Port: 1/4" BSPP;

#### CONFIGURATION OPTIONS

Model Code Example: FSU

##### MODIFIER

6061-T651 Aluminum, Buna-N  
/S 65-45-12 Ductile Iron, Buna-N, Blackened