

Part number:

**HYDROMA**

HYDRAULICKÉ SYSTÉMY

**HIDROMA  
SYSTEMS**

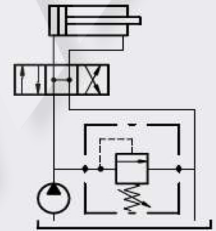
UKŁADY HYDRAULICZNE

**HYDROMA**

ГИДРАВЛИЧЕСКИЕ СИСТЕМЫ

**DIRECT ACTING VALVES,  
POPPET TYPE****Series VMP, VMP Y and MC****Operation**

Allows oil flow from P (1) to T (2) when pressure in P (1) reaches the setting of the spring.

**Performance****Body Valves**

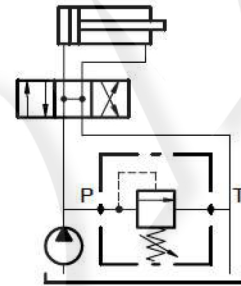
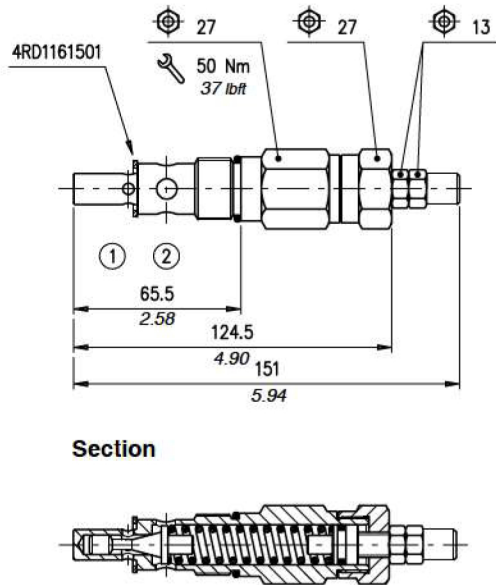
Type VMP	Maximum flow		Maximum pressure		Application range with standard spring*	Hysteresis	Oil leaks from P to T	Weight		Cavities and tools	
	l/min	US gpm	bar	psi				kg	lb		
VMP 02	5	1.32	350	5100	TV) 5÷80 bar - 72.5÷1150 psi TS) 50÷220 bar - 725÷ 3200 psi TR) 180÷350 bar - 2600÷5100 psi	90% of the setting value for flow capacity 1 l/min. (0,26 US gpm)	disregardable	0,05	0.11	Cavity VSE/ P/2/150 see page 113	
VMP 5	35	9.2			TB) 5÷40 bar - 72.5÷580 psi TV) 20÷80 bar - 290÷1150 psi TS) 50÷220 bar - 725÷ 3200 psi TR) 180÷350 bar - 2600÷5100 psi			85% of the setting value for flow capacity 1 l/min. (0,26 US gpm)	0,14	0.31	Cavity VMP 5 see page 114
VMP 5Y					TB) 5÷80 bar - 72.5÷1150 psi TV) 40÷150 bar - 580÷2200 psi TS) 140÷190 bar - 2050÷2750 psi TR) 180÷350 bar - 2600÷5100 psi						
VMP 5J					TV) 40÷80 bar - 580÷1150 psi TS) 63÷200 bar - 910÷2900 psi TR) 160÷315 bar - 2300÷4600 psi						
VMP 10	60	16		See VMP 5			0,25	0.55	Cavity VMP 10 see page 115		
VMP 10Y	100	26	315	4600	TV) 100÷160 bar - 1450÷2400 psi TS) 125÷250 bar - 1800÷3600 psi TR) 200÷315 bar - 2900÷4600 psi			0,45	0.99	Cavity VMP 20 see page 116	
VMP 20	100	26	400	5800	See VMP 5			0,20	0.44	Cavity VMP 12 see page 120	
VMP 20Y	160	42	315	4600	See VMP 10Y			0,33	0.73	Cavity VMP 34 see page 121	
VMP 12	35	9.2	300	4350	5÷40 bar - 72.5÷580 psi (test setting: 30 bar - 430 psi at 5 l/min. - 1.32 US gpm) 20÷100 bar - 290÷1450 psi (test setting: 70 bar - 1010 psi at 5 l/min. - 1.32 US gpm) 50÷200 bar - 725÷2900 psi (test setting: 140 bar - 2050 psi at 5 l/min. - 1.32 US gpm)** 100÷300 bar - 1450÷4350 psi (test setting: 210 bar - 3050 psi at 5 l/min. - 1.32 US gpm)**						
VMP 34	80	21									

\*To perform setting of the valve see the pressure drop/ flow diagram

\*\* (Only for VMP34) when the valve is ordered by itself max adjustable pressure is 150 bar (2200 psi).

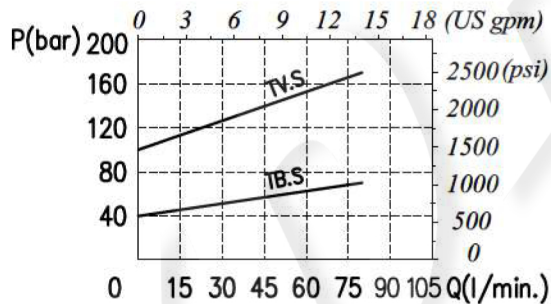
Cartridge may be set higher than 150 bar (2200 psi) when installed in the machine or into a proper body

## Dimensions and hydraulic circuit

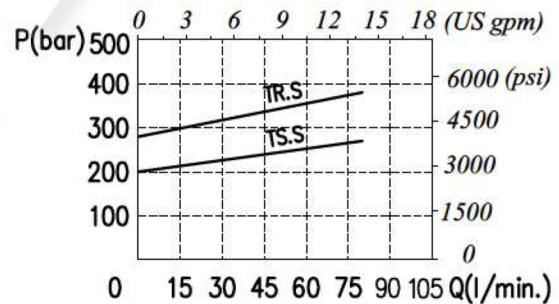


## Rating diagrams

Typical pressure drop vs. flow characteristic



Typical pressure drop vs. flow characteristic



## Order code

VMP 34 / □□ . □

### Pressure settings

- TB)** 5+40 bar (72.5÷580 psi)
- TV)** 20+100 bar (290÷1450 psi)
- TS)** 50+200 bar \* (725÷2900 psi)
- TR)** 100+300 bar \* (1450÷4350 psi)

### Adjustment

(see page 105)

- S** (screw)
- V** (handknob)
- P** (panel mount)
- PV** (panel mount+handknob)

\* when the valve is ordered by itself max adjustable pressure is 150 bar - 2200 psi.  
Cartridge may be set higher than 150 bar - 2200 psi when installed in the machine or into a proper body