

Part number:

HYDROMA

HYDRAULICKÉ SYSTÉMY

**HIDROMA
SYSTEMS**

UKŁADY HYDRAULICZNE

HYDROMA

ГИДРАВЛИЧЕСКИЕ СИСТЕМЫ

Tipo/Type

FPD-F.*.*.*.*.*

Sez/Section

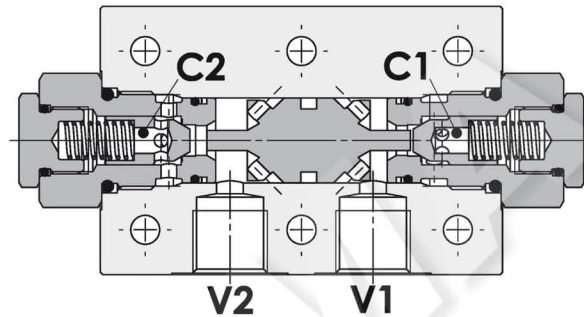
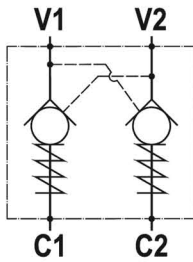
F

Pag./Page

040/1

Valvola di blocco pilotata doppia, montaggio a flangia
Double pilot operated check valve, gasket mounted

Rev.01-2010/02



SPECIFICHE TECNICHE

Materiali: corpo in alluminio, a richiesta in acciaio. I componenti interni sono in acciaio trattato termicamente e rettificati.

Portata max.: fino a 85 l/min

Pressione max.: vedere tabella pag. 02

Pressione di apertura: standard 2.5 bar, a richiesta 5-10 bar

TECHNICAL SPECIFICATIONS

Materials: std body is in aluminium, steel body on request. Internal parts are in hardened and ground steel.

Rated flow: up to 85 l/min

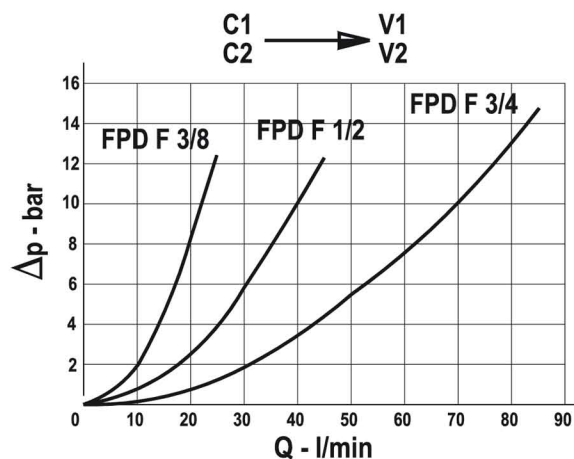
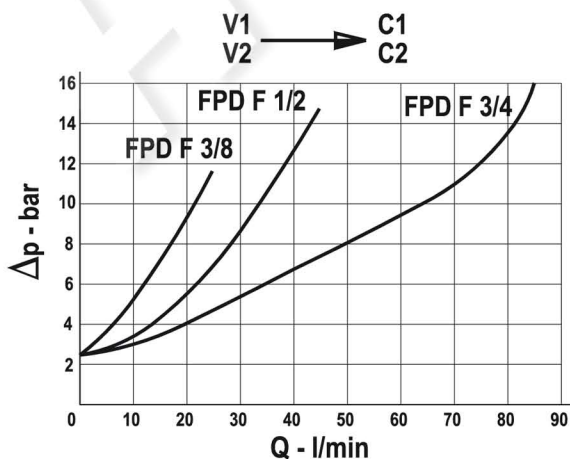
Max. pressure: see data sheet page 02

Cracking pressure: 2.5 bar standard, 5-10 bar on request

DIAGRAMMA PERDITE DI CARICO - PRESSURE DROP CURVES

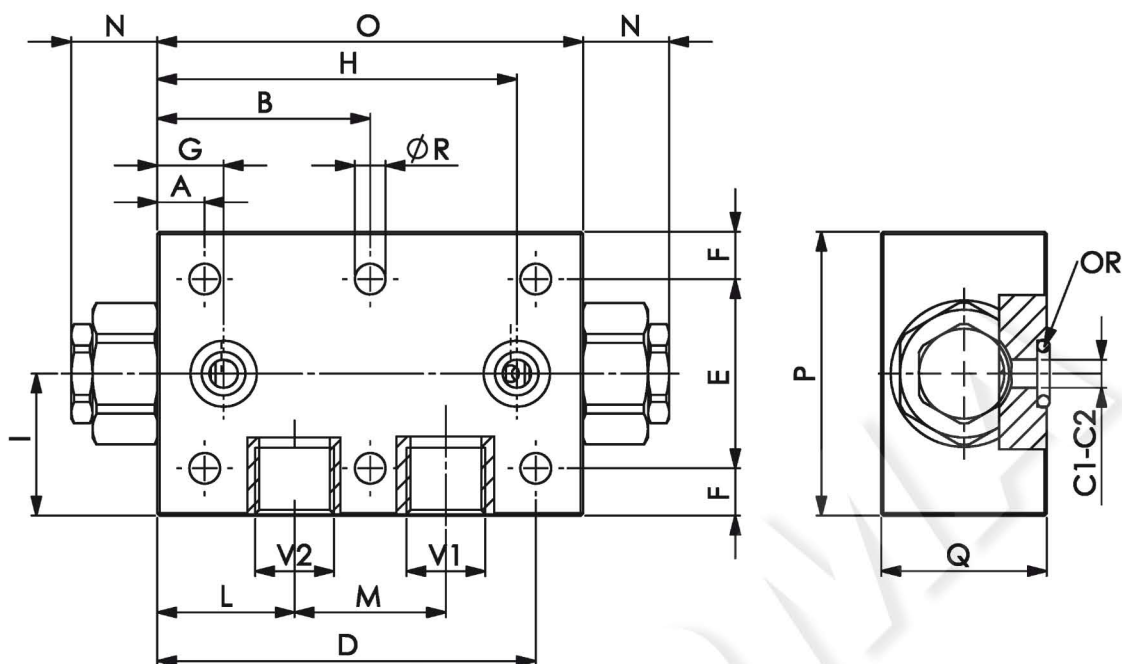
Viscosità olio 24 mm²/sec. (3,5 °E)
Temperatura 50 °C

Oil viscosity 24 mm²/sec. (3,5 °E)
Temperature 50 °C



Valvola di blocco pilotata doppia, montaggio a flangia
Double pilot operated check valve, gasket mounted

Rev.01-2010/02



| TIPO TYPE | PORTATA MAX. MAX FLOW | PRESS. MAX. MAX PRESSURE | V1 V2 | C1 C2 | A | B | D | E | F | G | H | I | L | M | N | O | P | Q | R | RAPP. DI PILOTAGGIO PILOT RATIO | PESO WEIGHT |
|--------------|-----------------------------|--------------------------------|----------|----------|----|------|-----|----|----|------|------|----|------|----|------|-----|----|------|------|---------------------------------------|------------------|
| | L/MIN | BAR | BSP | mm | mm | mm | mm | mm | mm | mm | mm | mm | mm | mm | mm | mm | mm | mm | mm | | Kg |
| FPD F 3/8 | 30 | 250 – 350(S) | 3/8" | 6 | 10 | 45 | 80 | 40 | 10 | 14 | 76 | 30 | 29 | 32 | 18.5 | 90 | 60 | 34.5 | 6.5 | 1 : 7 1 : 4(B) | 0.650 – 1.400(S) |
| FPD F 1/2 | 45 | 250 – 350(S) | 1/2" | 8 | 15 | 55 | 95 | 40 | 15 | 22.5 | 87.5 | 35 | 38 | 34 | 14.5 | 110 | 70 | 34.5 | 8.5 | 1 : 3.5 | 0.750 – 1.800(S) |
| FPD F 3/4 | 85 | 250 – 350(S) | 3/4" | 14 | 15 | 82.5 | 150 | 50 | 20 | 30 | 135 | 45 | 57.5 | 50 | 14 | 165 | 90 | 49.5 | 10.5 | 1 : 4 | 2.300 – 5.200(S) |

Queste valvole, data la loro configurazione, non consentono una elevata contropressione allo scarico

These valves, owing to their configuration, can't allow for an high discharge pressure

| | FPD F 3/8" | FPD F 1/2" | FPD F 3/4" |
|--------------------------|------------|------------|------------|
| Guarnizione OR – OR seal | 9,19x2,62 | 15,54x2,62 | 18,64x3,53 |

ESEMPIO DI ORDINAZIONE - ORDERING CODE EXAMPLE

F P D F 1 / 2 2 , 5 G B * *

- * 3/8 – 3/8" BSP
- * 1/2 – 1/2" BSP
- * 3/4 – 3/4" BSP
- Connessioni - Port sizes
- 2.5 bar (std) – 5 bar – 10 bar
- * Pressione apertura ritengo, omettere se std
- Cracking pressure, omit if std
- * Guarnizione sul pilota, omettere se non richiesta
- With o-ring on pilot valve, omit if not requested
- Guarnizioni – Seals:
V=Viton *
- Omettere se BUNA-N – Omit if BUNA-N
- Mat. corpo: omettere se alluminio, S=acciaio *
- Body material: omit if aluminium, S=steel
- B - solo per FPD F 3/8 R.PIL: 1:4
- B - only for FPD F 3/8 R.PIL: 1:4 *
- Omettere se std - omit if std