

Part number:

HYDROMA

HYDRAULICKÉ SYSTÉMY

**HIDROMA
SYSTEMS**

UKŁADY HYDRAULICZNE

HYDROMA

ГИДРАВЛИЧЕСКИЕ СИСТЕМЫ

Tipo / Type

FPS-*.*.*

Sez./Section

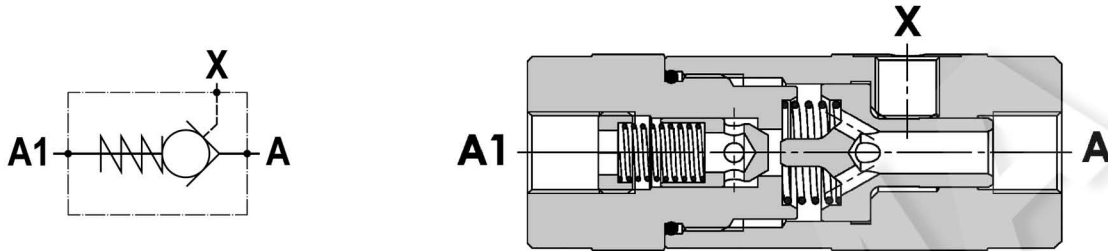
E

Pag./Page

010/1

Valvola di blocco pilotata semplice, montaggio in linea
Single pilot operated check valve, line mounted

Rev.02-2022/06



SPECIFICHE TECNICHE

Materiali: corpo in acciaio. L'otturatore conico guidato è in acciaio trattato termicamente. La superficie esterna è protetta mediante zincatura.

Portata: fino a 85 l/min

Pressione max.: 350 bar

Pressione di apertura: standard 0,5 bar, a richiesta 2,5-5-10 bar

TECHNICAL SPECIFICATIONS

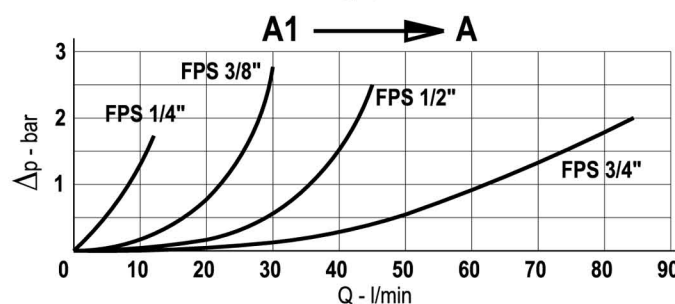
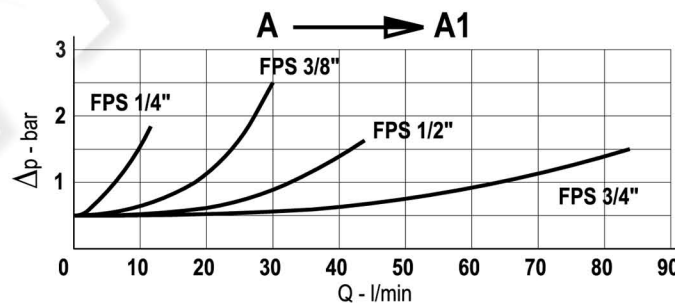
Materials: body is steel made. Guided poppet is in hardened steel. External surface is zinc plated.

Rated flow: up to 85 l/min

Max. pressure: 350 bar, see data sheet

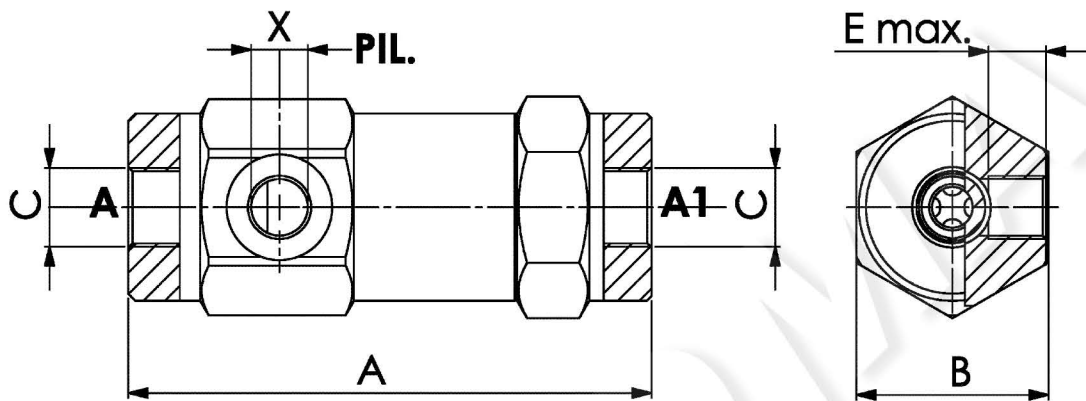
Cracking pressure: 0,5 bar standard, 2,5-5-10 bar on request

DIAGRAMMA PERDITE DI CARICO PRESSURE DROP CURVES



Valvola di blocco pilotata semplice, montaggio in linea
Single pilot operated check valve, line mounted

Rev.02-2022/06



TIPO TYPE	PORTATA MAX. MAX FLOW	PRESSIONE MAX. MAX PRESSURE	A	B	C	X	E	RAPP. DI PILOTAGGIO PILOT RATIO	PESO WEIGHT
	L/MIN	BAR	mm	mm	BSPP	BSPP	mm		Kg
FPS 1/4"	12	350	103	36	1/4"	1/4"	11	1 : 9	0.650
FPS 3/8"	30	350	109	40	3/8"	1/4"	11.5	1 : 6	0.820
FPS 1/2"	45	350	120	42	1/2"	1/4"	11	1 : 4.5	0.960
FPS 3/4"	85	300	131	55	3/4"	1/4"	14	1 : 3.7	1.950

ESEMPIO DI ORDINAZIONE - ORDERING CODE EXAMPLE

F P S **1 / 4** **2 , 5** *****

1/4 - 1/4" BSPP
 3/8 - 3/8" BSPP
 * 1/2 - 1/2" BSPP
 3/4 - 3/4" BSPP
 Connessioni - Port sizes

Guarnizioni - Seals:
 V=Viton *
 Omettere se BUNA-N - Omit if BUNA-N

0.5 bar (std) - 2.5 bar - 5 bar - 10 bar
 Pressione apertura ritegno, omettere se std *
 Cracking pressure, omit if std