

Part number:

HYDROMA

HYDRAULICKÉ SYSTÉMY

**HIDROMA
SYSTEMS**

UKŁADY HYDRAULICZNE

HYDROMA

ГИДРАВЛИЧЕСКИЕ СИСТЕМЫ

Solenoid operated valves pilot operated poppet type
2-way normally open
Special cavity, 017-E

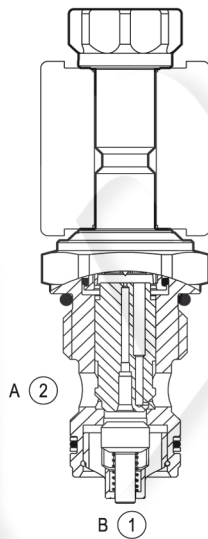
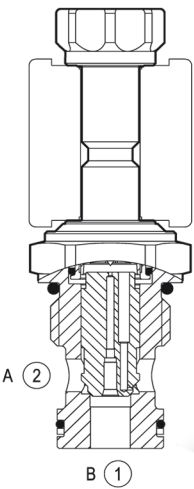
VEI-8A-09-NA

OD.15 - X - 17 - Y - S0

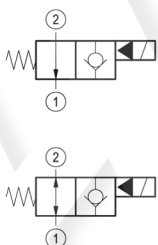


Technical data

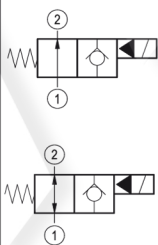
General		
Weight		0.21 kg (0.46 lbs)
Installation orientation		Optional
Ambient temperature range		-30 to 60 °C (-22 to 140 °F)
Hydraulic		
Max. operating pressure		350 bar (5000 psi)
Max. proof pressure		420 bar (6000 psi)
Flow range		2 - 70 l/min (0.5 - 18 gpm)
Fatigue cycle life		1 million cycles at 350 bar
Max. internal leakage		20 drops/min.
Fluid temperature range		-20 to 80 °C (-4 to 176 °F)
Fluids: Mineral-based or synthetics with lubricating properties at viscosities of 20 to 380 mm ² /s (cSt)		
Installation torque		54 - 66 Nm (40 - 49 ft-lbs)
Recommended degree of fluid contamination		Nominal value max. 10 µm (NAS 8) ISO 4406 19/17/14
MTTFd		150 years see RE 18350-51 except for codes market with *
Special cavity		017-E see 18325-75
Lines bodies and standard assemblies		Please refer to section "Hydraulic integrated circuit" or consult factory
Seal kit – version 1	code	RG17E201052010
	material no.	R934003562
Seal kit – version 2-3-4	code	RG17E201053010
	material no.	R934003563
Seal kit coil	code	RG12A1PNBR7010
	material no.	R934003958
Other technical data		See data sheet 18350-50
Electrical		
Type of voltage		DC voltage
Coil type		S8-356 see 18325-90
Supply voltage		See data sheet 18325-90
Nominal voltage		± 10%
Power consumption		20 W
Duty cycle coil		See characteristic curves %
Type of protection		See data sheet 18325-90
Note: Coils must be ordered separately		



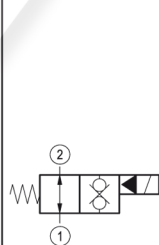
▼ Version 1



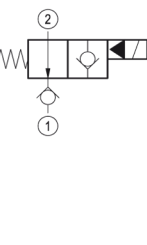
▼ Version 2



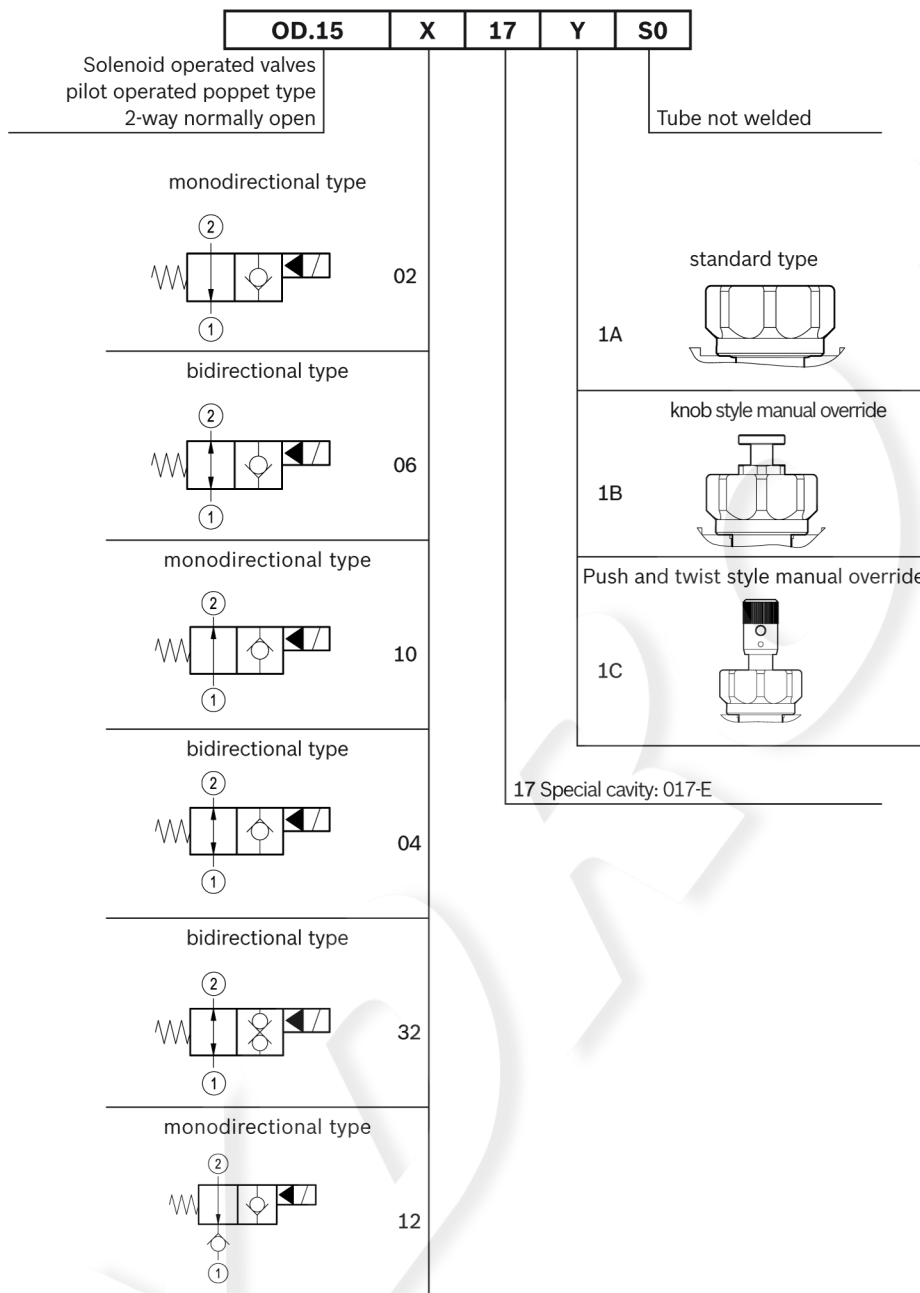
▼ Version 3



▼ Version 4



Ordering code



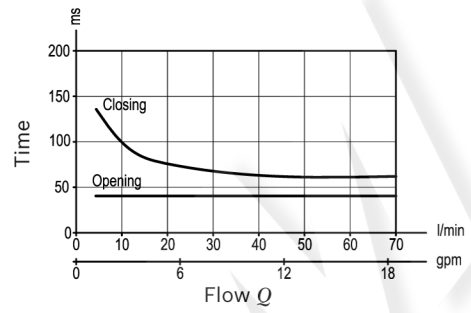
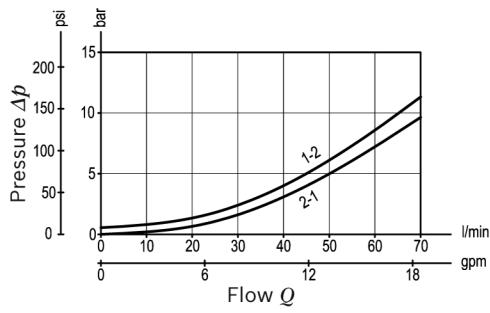
Type	Material number
OD1502171AS000	R934000718
OD1502171BS000	R934000721
OD1502171CS000	R901177370
OD1506171AS000	R901113677
OD1506171BS000	R901113680
OD1506171CS000	R934000956
OD1504171AS000	R901113668
OD1504171BS000	R901113669

Type	Material number
OD1504171CS000	R934000809
OD1510171AS000	R934001051
OD1510171BS000	R934004148
OD1510171CS000	R934001052
OD1512171AS000	R934001090 *
OD1532171AS000	R901113683
OD1532171BS000	R901113684
OD1532171CS000	R934001189

Characteristic curves

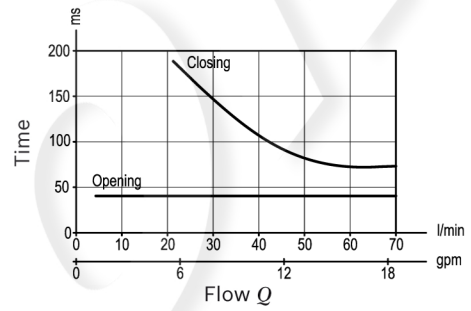
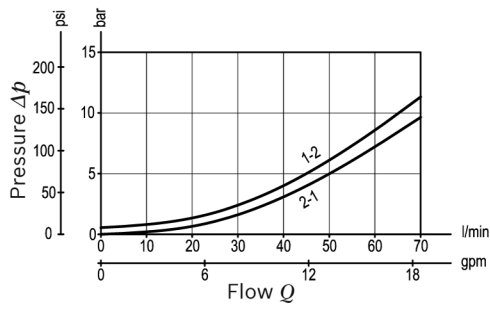
Version 1-2

Standard



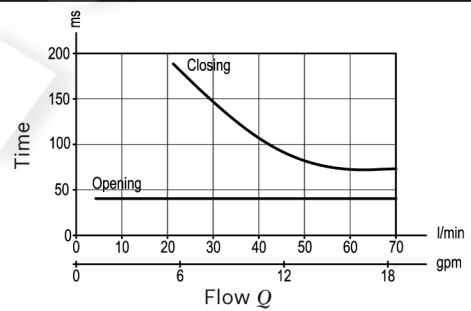
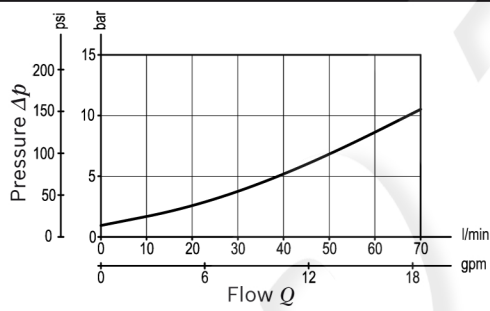
Version 3

Standard



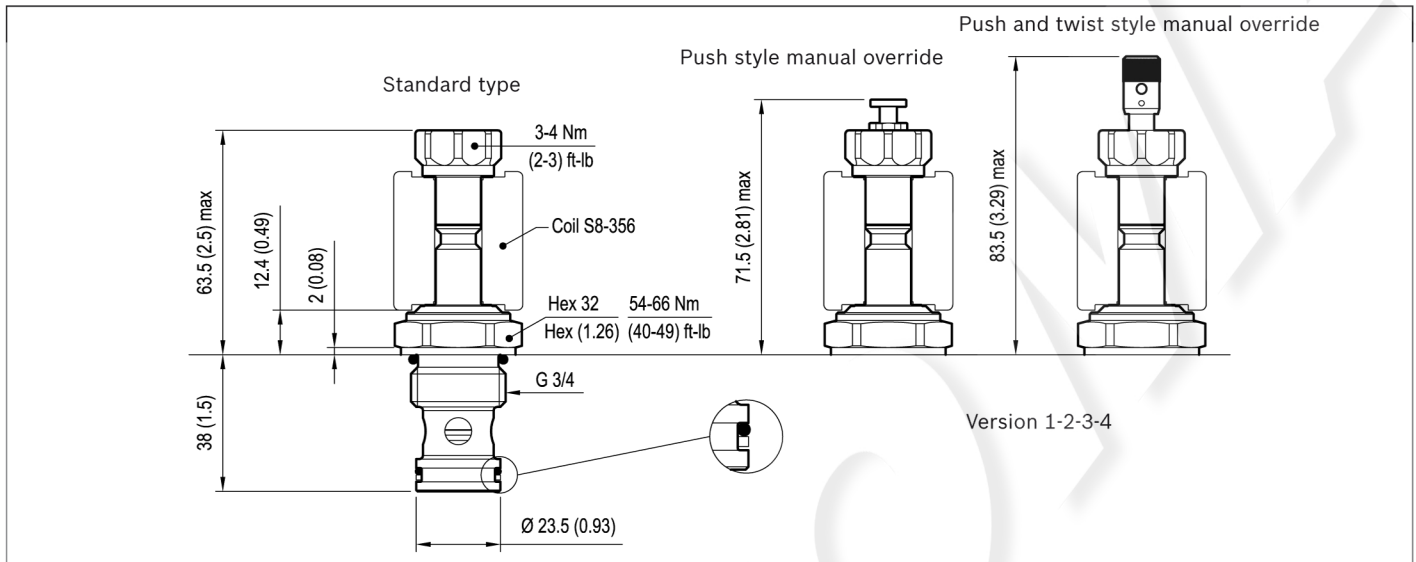
Version 4

Standard



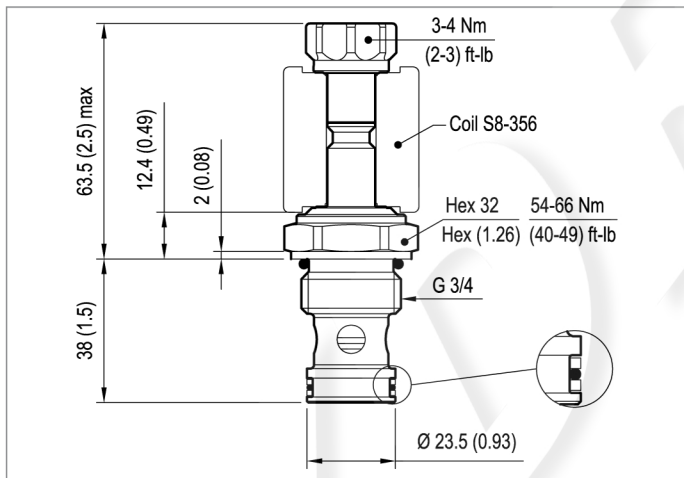
Dimensions

▼ Version 1: Solenoid operated valves, poppet 2-way normally open



▼ Version 2: Solenoid operated valves, poppet 2-way normally open

▼ Version 3: Solenoid operated valves, poppet 2-way double lock normally open



▼ Version 4: Solenoid operated valves, poppet 2-way normally open

