

Part number:

HYDROMA

HYDRAULICKÉ SYSTÉMY

**HIDROMA
SYSTEMS**

UKŁADY HYDRAULICZNE

HYDROMA

ГИДРАВЛИЧЕСКИЕ СИСТЕМЫ

Inlet Elements with Primary Pressure Relief Valve and with Solenoid Unloading Cartridge

TE-05-__-



Technical data

General			
Inlet Element Type		AL Version	CI Version
TE-05-02-00-	kg (lbs)	0.50 (1.10)	1.26 (2.78)
TE-05-03-00-	kg (lbs)	0.74 (1.68)	1.92 (4.20)
TE-05-56-00-	kg (lbs)	0.74 (1.68)	Not available
TE-05-02-S_-	kg (lbs)	0.60 (1.39)	1.40 (3.10)
TE-05-03-S_-	kg (lbs)	0.94 (2.06)	2.10 (4.60)
TE-05-56-S_-	kg (lbs)	0.94 (2.06)	Not available
Ambient Temperature	°C (°F)	-20...+50 (-4...+122) (NBR seals)	
Hydraulic			
Maximum pressure for aluminium version (AL)	bar (psi)	250 (3625)	
Maximum pressure for Cast Iron version (CI)	bar (psi)	310 (4500)	
Maximum inlet flow	l/min (gpm)	50 (13.2)	
Hydraulic fluid		Mineral oil based hydraulic fluids HL (DIN 51524 part 1).	
General properties: it must have physical lubricating and chemical properties suitable for use in hydraulic systems such as, for example:		Mineral oil based hydraulic fluids HLP (DIN 51524 part 2). For use of environmentally acceptable fluids (vegetable or polyglycol base) please consult us.	
Fluid Temperature	°C (°F)	-20...+80 (-4...+176) (NBR)	
Permissible degree of fluid contamination		ISO 4572: $\beta_{x \geq 75} X = 10 \dots 12$ ISO 4406: class 19/17/14 NAS 1638: class 8	
Viscosity range	mm ² /s	5...420	

Description

The inlet elements TE-05-__ are employed to connect the external P and T lines to the P and T channels inside the ED elements of the Directional Valve Assembly. They incorporate a pressure relief cartridge which limits the primary pressure in the P line. The relief setting can be checked through the Test Point port M. When fitted, the Normally Open Solenoid Unloading VEI Cartridge unloads to Tank all the P line flow; unloading stops when the cartridge coil is energized.

The TE-05-__ inlet elements are available in two versions:

- Body made of Black Anodized Aluminium (Al), or
 - Body made of Yellow Zinc plated (Cr+3) Cast Iron (CI).
- Port sizes can be G 3/8, G 1/2 or SAE 8 (3/4" 16 UNF).

Note

For applications with different specifications consult us

Ordering details

01	02	03	04	05	06	07	08
TE	-	05	-	-	-	-	-

Family

01	Inlet Elements	TE
----	----------------	----

Configuration

02	With primary pressure relief valve and with solenoid unloading cartridge	05
----	--	----

Ports

03	G 3/8 DIN 3852	02
	G 1/2 DIN 3852	03
	3/4-16 UNF-2B (SAE8)	56

Primary Pressure Relief range

04	Without primary pressure relief valve	00
	Pressure range 25-120bar (362-1740 psi)	SN
	Pressure range 40-200bar (580-2900 psi)	SB
	Pressure range 200-350bar (2900-5076 psi)	SV

Material

05	Cast Iron ¹⁾	CI
	Aluminium	AL

Cartridge voltage supply

06	No cartridge	No code
	Cartridge without coil	00
	12V DC	OB
	24V DC	OC
	26V DC	AC

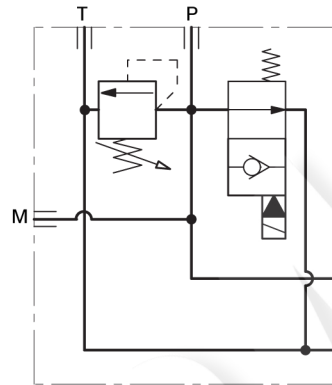
Electric connections

07	No cartridge	No code
	Without coils	00
	With coils, without mating connector DIN EN 175301-803 ²⁾	01
	With coils, with bi-directional diode, without mating connector vertical Amp-Junior	03
	With coils, with bi-directional diode, without mating connector DT04-2P	07

Options

08	No cartridge	No code
	Standard	00
	Push-button type manual override	OP
	Push and twist type manual override	SG

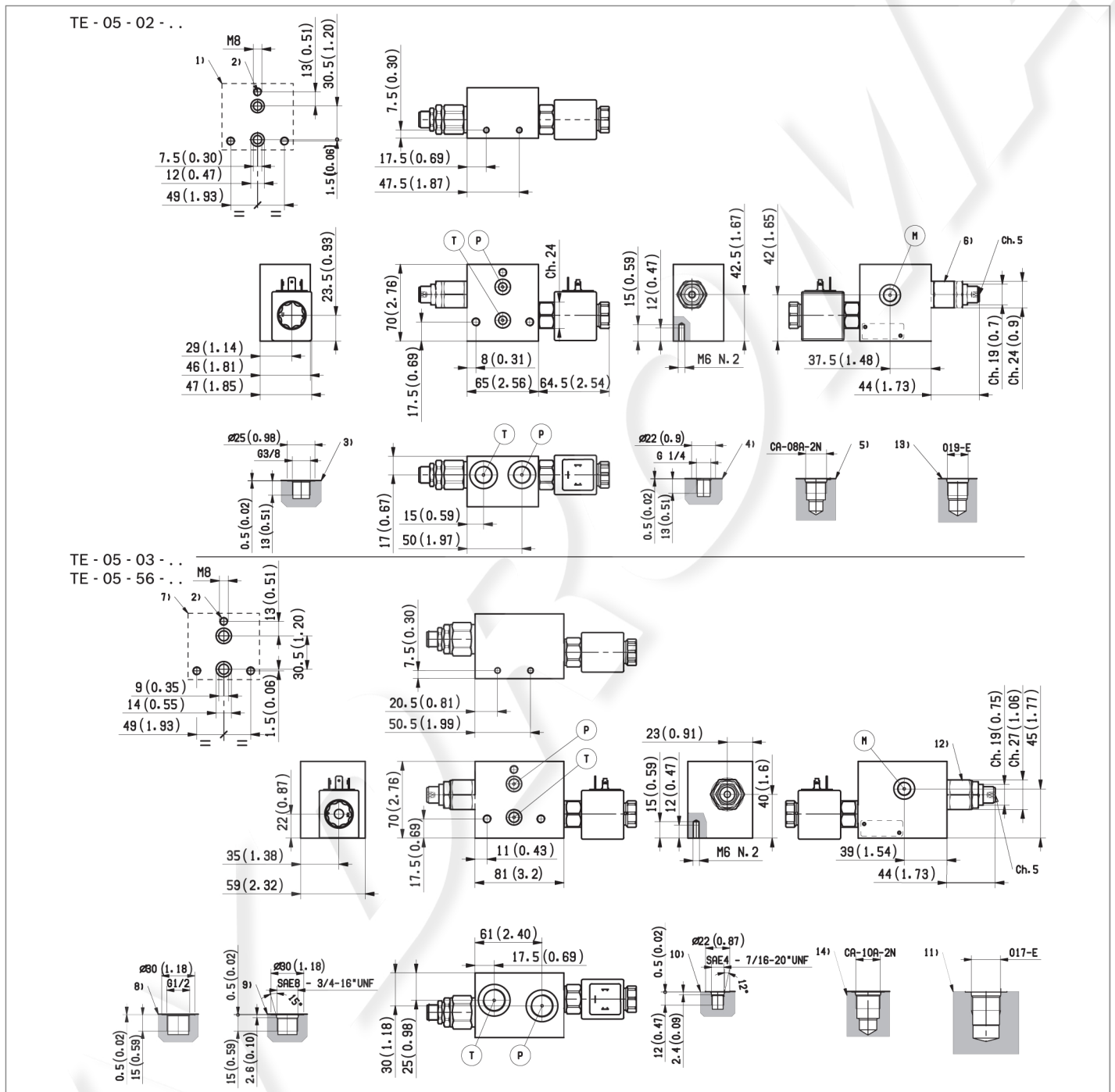
Symbol



1) Only available for versions with G 1/2 ports (TE-01-03-...)

2) For connectors ordering code see data sheet RE 18325-90.

External dimensions and fittings



- 1 Flange specifications for coupling to the ED Directional Valve Elements:
- 2 For tie rod and tightening torque information see data sheet RE 18301-90.
- 3 Hydraulic Ports P-T G 3/8, for Inlet Elements TE-05-02...
- 4 Test Point port M G 1/4, for Inlet Elements TE-05-02... and TE-05-03...
- 5 Cavity for Solenoid Unloading Cartridge, VEI type, for versions TE-05-02...
- 6 Primary Pressure Relief Cartridge VMD1025, with screw type adjuster (refer to RE 18301-91) for TE-05-02... inlet elements.
- 7 Flange specifications for coupling to the ED Directional Valve Elements (versions TE-05-03..., TE-05-56-...).
- 8 Hydraulic Ports P-T G 1/2, for versions TE-05-03-...
- 9 Hydraulic Ports P-T SAE 8, for versions TE-05-56-...
- 10 Test Point port SAE 4, for versions TE-05-56-...
- 11 Cavity for Solenoid Unloading Cartridge, VEI type, for versions TE-05-03-... and TE-05-56-...
- 12 Primary Pressure Relief Cartridge VMD1040, with screw type adjuster for versions TE-05-03-... and TE-05-56-... (refer to RE 18301-91).
- 13 Cavity for Primary Pressure Relief Cartridge VMD1025.
- 14 Cavity for Primary Pressure Relief Cartridge VMD1040.