

Part number:

**HYDROMA**

HYDRAULICKÉ SYSTÉMY

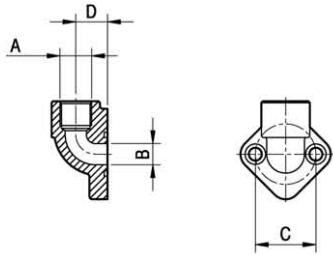
**HIDROMA  
SISTEMS**

UKŁADY HYDRAULICZNE

**HYDROMA**

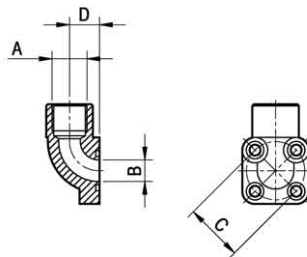
ГИДРАВЛИЧЕСКИЕ СИСТЕМЫ

**RACCORDI / FITTINGS**



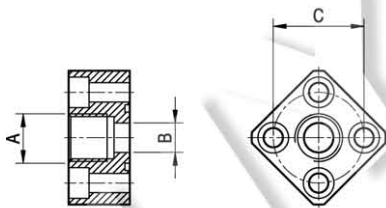
**RG**

TIPO TYPE	A	B	C	D	COPPIA DI SERRAGGIO (VITI) TORQUE WRENCH SETTING FIXED (SCREWS)
					Nm
RG3/8x30	G3/8	12	30	17,5	10
RG1/2x30	G1/2	12	30	17,5	10
RG3/8x40	G3/8	14	40	18	20
RG1/2x40	G1/2	14	40	21	20
RG3/4x40	G3/4	19	40	21	20
RG1x51	G1	25,5	51	25,5	30
RG3/4x56	G3/4	20	56	27	30
RG1x56	G1	25,5	56	27	30
RG1 1/4x62	G1 1/4	32	62	34,5	30
RG1 1/2x72,5	G1 1/2	40	72,5	34,5	50
RG2 1/2x92	G2 1/2	65	92	51	50



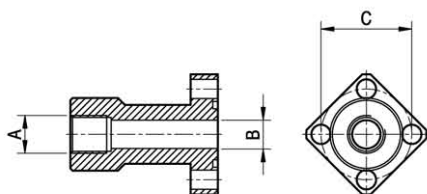
**BK**

TIPO TYPE	A	B	C	D	COPPIA DI SERRAGGIO (VITI) TORQUE WRENCH SETTING FIXED (SCREWS)
					Nm
BK 3/8x35	G3/8	13	35	18	10
BK 1/2x35	G1/2	13	35	18	10
BK 18x35	M18x1,5	13	35	18	10
BK 18x40	M18x1,5	19	40	24	10
BK 1/2x40	G1/2	19	40	24	10
BK 3/4x40	G3/4	19	40	24	10
BK 1x55	G1	25	55	29	20



**FI**

TIPO TYPE	A	B	C	COPPIA DI SERRAGGIO (VITI) TORQUE WRENCH SETTING FIXED (SCREWS)
				Nm
FI 3/8x30	G3/8	12,5	30	10
FI 3/8x40	G3/8	13	40	20
FI 1/2x40	G1/2	13	40	20
FI 3/4x56	G3/4	20	56	30
FI 1x56	G1	27	56	30
FI 1 1/4x62	G1 1/4	33	62	30
FI 1 1/2x72,5	G1 1/2	42	72,5	50



**DFI**

TIPO TYPE	A	B	C	COPPIA DI SERRAGGIO (VITI) TORQUE WRENCH SETTING FIXED (SCREWS)
				Nm
DFI 3/8x30	G3/8	12,5	30	10
DFI 1/2x30	G1/2	12,5	30	10
DFI 3/8x40	G3/8	12,5	40	20
DFI 1/2x40	G1/2	12,5	40	20
DFI 3/4x40	G3/4	19	40	20
DFI 3/4x56	G3/4	20	56	30
DFI 1x56	G1	26	56	30