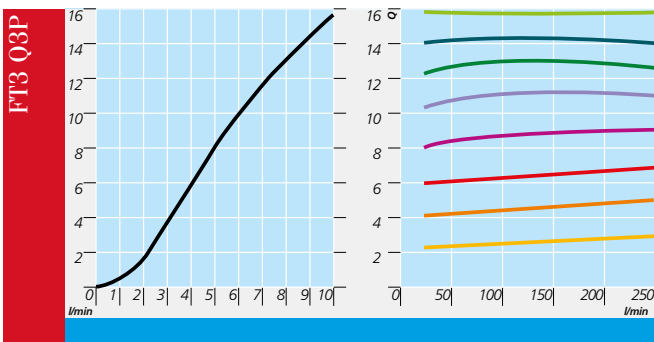


A HOW TO READ THE MODEL CODE FOR VALVES FT3-Q3P

FT3 - Q3 - (P) - (16) / ** / 10

| 1 | 2 | 3 | 4 | 5 | 6 |
|---|--|--|---|---|---|
| 1 | FT3 | stackable valve CETOP 03 - Pressure 32 MPa (320 bar) | | | |
| 2 | Q3 | pressure reduced, pilot operated - 3-way valve | | | |
| 3 | (P) | service line where the control operates - see also functional symbols A | | | |
| 4 | (16) | Flow control characteristics 16=0,06 (16 l/min max. regulated flow control rate to P1. When the inlet flow (at P2) is higher than the required value, the excess is discharged in T. | | | |
| 5 | Code reserved for special variants (seals, materials, surface treatments, etc.). | | | | |
| 6 | Design number (progressive) of the valve. | | | | |

B TYPICAL DIAGRAMS



Typical holding curves (Q e Q-P) for valves AM3-Q3-P
Oil at 36 eSt and at 50°C

**STACKABLE VALVES CETOP 03
FLOW CONTROL VALVES
PRESSURE COMPENSATED**

3-way pressure compensated flow control valves are designed to provide adjustable controlled flow rates independent of changes in system pressure.

The flow control valve consists basically housing throttling spool ②, pressure compensator ③, spring handknob ⑤ with adjusting parts.

Fluid from port P2 is divided into two parts; one part passes through orifice area of the throttling spool and onwards to port P1, the other part proceeds through orifice area of the compensator to port T.



FTB 03P

C CONTROL OF THE FLOW

By turning the knob the value of the regulated flow changes.

The scale/flow characteristics is approx. linear and the full range is covered by turning the knob by approx. 320°.

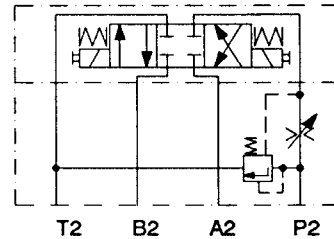
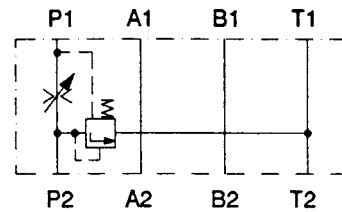
The scale is divided in 10 marks.

Clockwise: flow increases

Anticlockwise: flow decreases

When the required value is reached, set the knob position by fixing the screw.

E FUNCTIONAL SYMBOLS



D DATA AND OPERATING PRESSURE

| | |
|----------------------------|------------------|
| Recommended max. flow rate | 42 l/min |
| Max. flow rate on P1 | 16 l/min |
| Max. nominal pressure | 32 MPa (320 bar) |
| Adjustment | see B |
| Correction | see C |
| Mass dimensions | see F |
| Weight | approx. 0,8 kg |

F INSTALLATION DIMENSION

Standardized ISO - Alla data are expressed in mm

