

Part number:



61 200/110 ED

MCD

DIRECT OPERATED PRESSURE RELIEF VALVE

SERIES 51

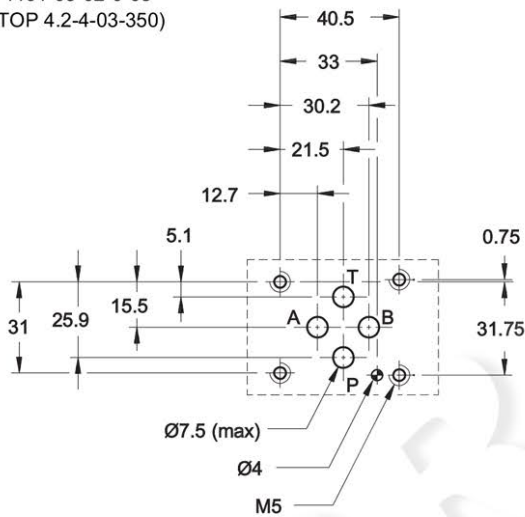


MODULAR VERSION
ISO 4401-03 (CETOP 03)

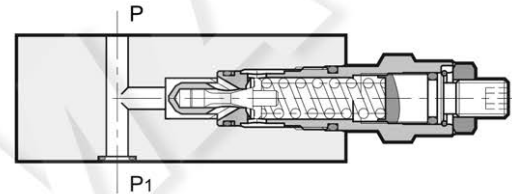
p max 350 bar
Q max (see table of performances)

MOUNTING INTERFACE

ISO 4401-03-02-0-05
(CETOP 4.2-4-03-350)



OPERATING PRINCIPLE



- The MCD valve is a direct operated pressure relief valve made as a modular version with mounting surface according to the ISO 4401 (CETOP RP 121H) standards.
- It can be assembled with all ISO 4401-03 (CETOP 03) modular valves without use of pipes, using suitable tie-rods or bolts.
- It is available in versions for single adjustment on one control line, or dual on two control lines and with four different pressure adjustment ranges.
- This valve is normally used as a hydraulic circuit pressure limiting device or as a limiting device of the pressure peaks generated during the movement of hydraulic actuators.
- It is normally supplied with a hexagonal head adjustment screw, locking nut and limitation of the maximum adjustment travel.

CONFIGURATIONS (see hydraulic symbols table)

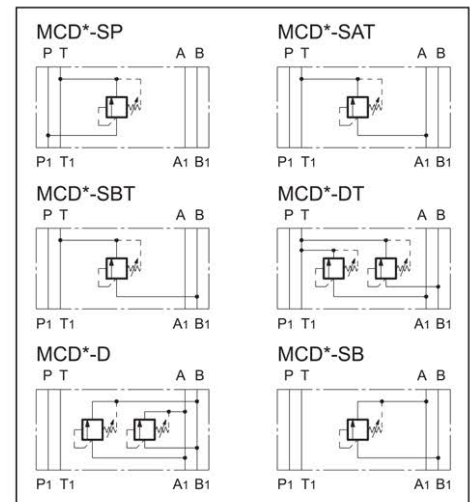
- “SP”: controls the pressure on line P with discharge in T
- “SAT”: controls the pressure on line A with discharge in T
- “SBT”: controls the pressure on line B with discharge in T

- “DT”: controls the pressure on lines A-B with discharge in T
- “D”: controls the pressure on lines A-B with crossed discharges
- “SB”: controls the pressure on line B with discharge in A

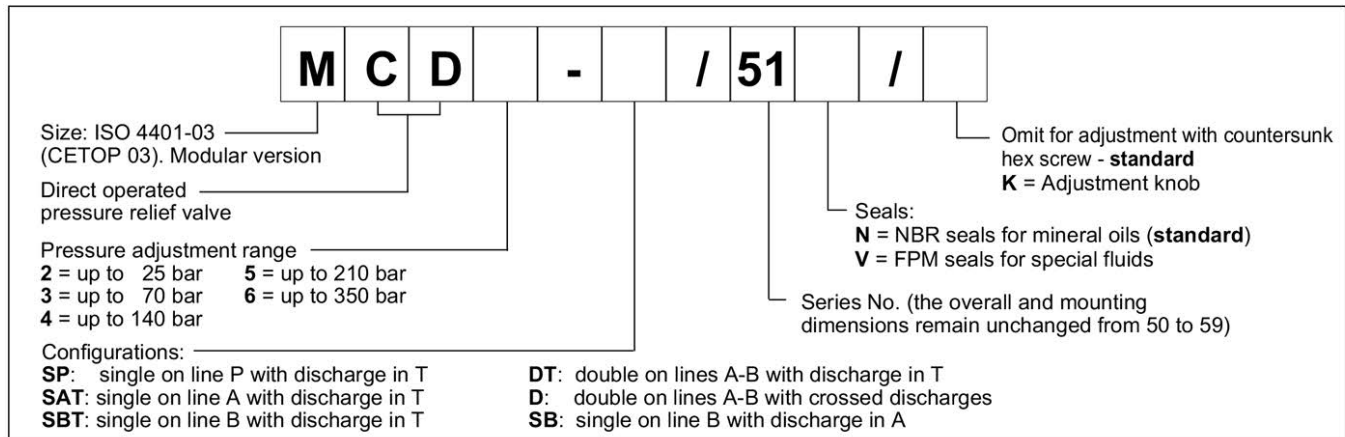
PERFORMANCES (measured with mineral oil of viscosity 36cSt at 50°C)

Maximum operating pressure	bar	350
Minimum controlled pressure	see Δp diagram	
Maximum flow rate in controlled lines	l/min	50
Maximum flow rate in the free lines		75
Ambient temperature range	°C	-20 / +50
Fluid temperature range	°C	-20 / +80
Fluid viscosity range	cSt	10 ÷ 400
Fluid contamination degree	According to ISO 4406:1999 class 20/18/15	
Recommended viscosity	cSt	25
Mass: MCD-SP / MCD-SAT / MCD-SBT / MCD-SB	kg	1,4
MCD-DT / MCD-D		2,0

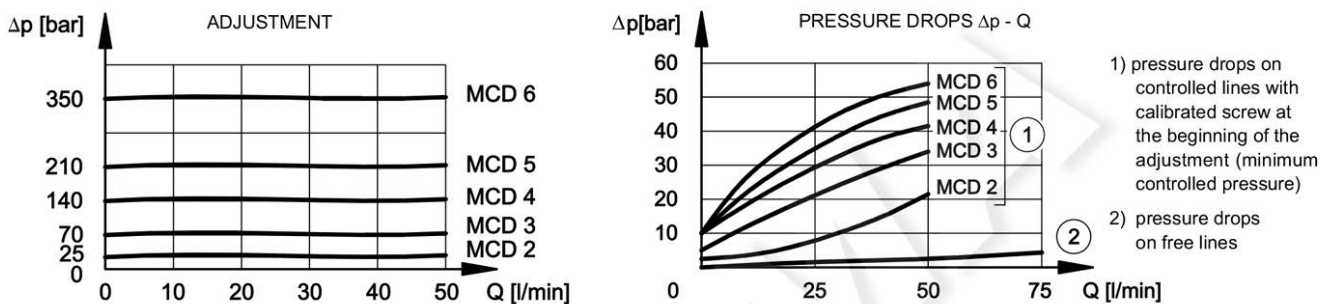
HYDRAULIC SYMBOLS



1 - IDENTIFICATION CODE



2 - CHARACTERISTIC CURVES (values obtained with viscosity of 36 cSt at 50°C)



3 - HYDRAULIC FLUIDS

Use mineral oil-based hydraulic fluids HL or HM type, according to ISO 6743-4. For these fluids, use NBR seals. For fluids HFDR type (phosphate esters) use FPM seals (code V). For the use of other kinds of fluid such as HFA, HFB, HFC, please consult our technical department. Using fluids at temperatures higher than 80 °C causes a faster degradation of the fluid and of the seals characteristics.

The fluid must be preserved in its physical and chemical characteristics.

4 - OVERALL AND MOUNTING DIMENSIONS

