

Part number:

076-11101a**HYDROMA**

HYDRAULICKÉ SYSTÉMY

**HIDROMA
SYSTEMS**

UKŁADY HYDRAULICZNE

HYDROMA

ГИДРАВЛИЧЕСКИЕ СИСТЕМЫ

ALP4

COME ORDINARE / HOW TO ORDER

ALP4	TIPO TYPE	ROTAZIONE ROTATION	TAGLIA SIZE	ALBERO* SHAFT*	PORTE* PORTS*	GUARNIZIONI* SEALS*	OPZIONI* OPTIONS*
	omit	D DESTRA CLOCKWISE	130				
	E	S SINISTRA COUNTER CLOCKWISE	160				
	A		190				
			220				
			250				
			270				
			300				

Guarnizioni / Seals
omit (T range = -10°C + 80°C)
Y
...

Opzioni / Options
TR
...

[*] = campi da specificare se diversi dallo standard
"tipo pompa" / to be specified if different from
standard pump type

Tipi Pompa Standard / Pump Standard Types

omit = flangia europea + albero TO + porte E + guarnizioni standard / european flange + shaft TO + ports E + standard seal
E = flangia E + albero CO + porte A + guarnizioni standard / flange E + shaft CO + ports A + standard seal
A = flangia A + albero CO + porte A + guarnizioni standard / flange A + shaft CO + ports A + standard seal

Esempi / Examples:

ALP4-D-190 = rotazione destra, 128 cm³/giro, flangia europea, albero conico 1:8, porte flangiate tipo E, guarnizioni standard
clockwise rotation, 128 cm³/rev, european flange, 1:8 tapered shaft, flanged ports E types, standard seals
ALP4-D-190-S0 = rotazione destra, 128 cm³/giro, flangia europea, albero scanalato (S0), porte flangiate tipo E, guarnizioni standard
clockwise rotation, 128 cm³/rev, european flange, 1:8 splined shaft (S0), flanged ports E types, standard seals
ALP4A-D-190 = rotazione destra, 128 cm³/giro, flangia SAE C 6 fori, albero cilindrico, porte flangiate tipo A, guarnizioni standard
clockwise rotation, 128 cm³/rev, SAE C 6 bolts flange, cylindrical shaft, flanged ports A types, standard seals

LE TAVOLE DI PRODOTTO RAPPRESENTANO I TIPI POMPA STANDARD PER MARZOCCHI POMPE. LE TAVOLE SINOTTICHE DI FLANGE, ALBERI E PORTE HANNO LO SCOPO DI RAPPRESENTARE TUTTE LE POSSIBILI CONFIGURAZIONI DI PRODOTTO. PER MAGGIORI DETTAGLI SULLE DISPONIBILITÀ E CONDIZIONI DI FORNITURA, CONSIGLIAMO DI INTERPELLARE IL NOSTRO UFFICIO TECNICO-COMMERCIALE.

THE PRODUCT DATA SHEETS SHOW OUR STANDARD MODEL TYPES. THE SYNOPSIS TABLES FOR FLANGES, SHAFTS AND PORTS SHOW ALL THE POSSIBLE CONFIGURATIONS. FOR FURTHER DETAILS ABOUT THE AVAILABILITY OF EACH CONFIGURATION PLEASE CONTACT OUR SALES AND TECHNICAL DEPT.

Part number:

076-11101b

HYDROMA

HYDRAULICKÉ SYSTÉMY

**HIDROMA
SYSTEMS**

UKŁADY HYDRAULICZNE

HYDROMA

ГИДРАВЛИЧЕСКИЕ СИСТЕМЫ

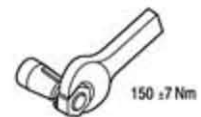
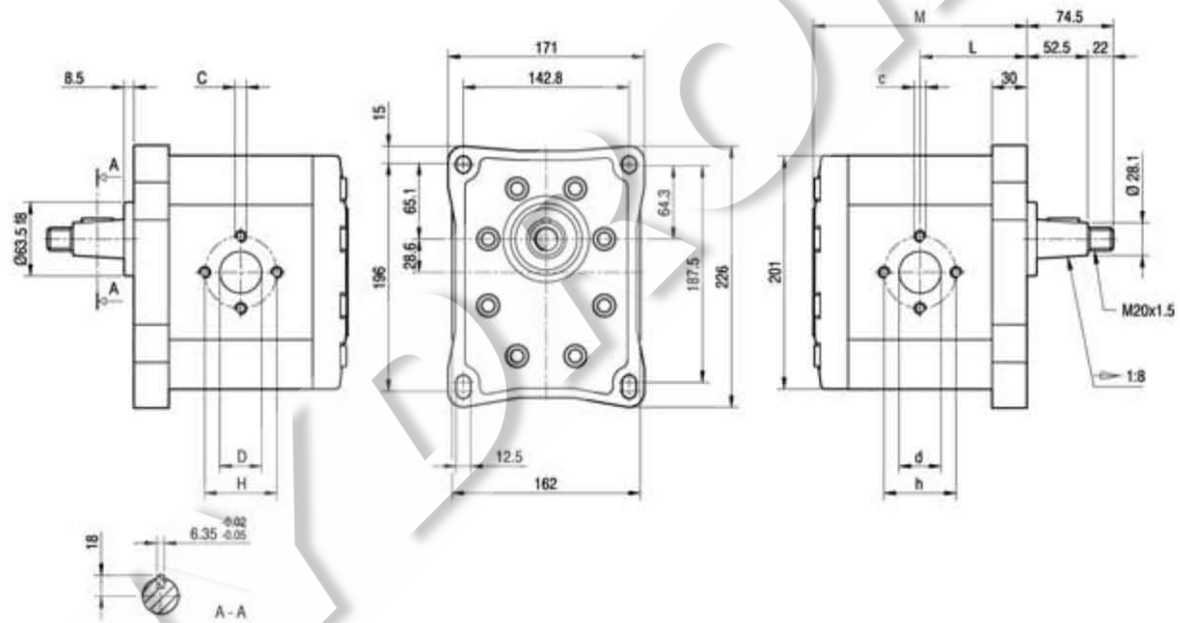
ALP4

Parti accessorie a corredo della pompa standard: linguetta a disco (codice 522263), dado M20x1.5 (codice 523019), rosetta elastica spaccata (codice 523008).
Porte standard: filetti M10 e M12 profondità utile 21 mm.

Accessories supplied with the standard pump: woodruff key (code 522263), M20x1.5 hexagonal nut (code 523019), washer (code 523008).
Standard ports: M10 and M12 threads depth 21 mm.

MANDATA
OUTLET

ASPIRAZIONE
INLET



TIPO TYPE	CILINDRATA DISPLACEMENT	PORTATA a 1500 giri/min FLOW at 1500 rev/min	PRESSIONI MASSIME MAX PRESSURE			VELOCITÀ MASSIMA MAX SPEED	DIMENSIONI DIMENSIONS							
			P ₁	P ₂	P ₃		L	M	c	C	d	D	h	H
	cm ³ /giri (cm ³ /rev)	litri/min (l/min)	bar	bar	bar	giri/min (rpm)	mm	mm	mm	mm	mm	mm	mm	mm
ALP4 D 130	87	124	240	260	280	2800	92	184	M10	M10	36	30	62	56
ALP4 D 160	106	151	200	220	240	2300	96	192	M10	M10	36	30	62	56
ALP4 D 190	128	182	180	200	220	2500	100,5	201	M12	M10	45	36	72,5	62
ALP4 D 220	147	209	170	190	210	2200	104,5	209	M12	M10	45	36	72,5	62
ALP4 D 250	166	237	160	170	190	2000	108,5	217	M12	M10	45	36	72,5	62
ALP4 D 270	181	258	140	150	170	2400	111,5	223	M12	M12	56	45	92	72,5
ALP4 D 300	200	285	130	140	150	2400	115,5	231	M12	M12	56	45	92	72,5

Part number:

076-11101c

HYDROMA

HYDRAULICKÉ SYSTÉMY

**HIDROMA
SYSTEMS**

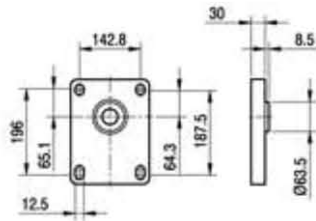
UKŁADY HYDRAULICZNE

HYDROMA

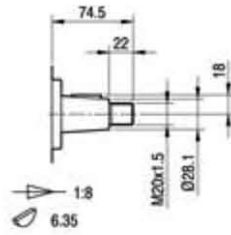
ГИДРАВЛИЧЕСКИЕ СИСТЕМЫ

ALP4

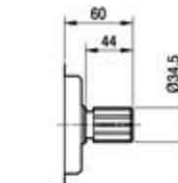
FLANGE / FLANGES



ALBERI / SHAFTS



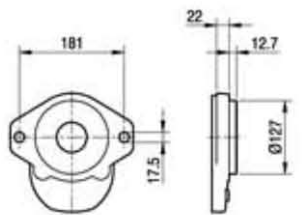
Coppia Max
Max Torque 550 Nm



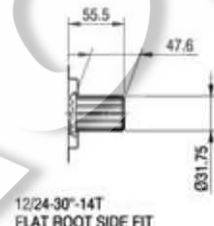
DIN 5482
B35x31



Coppia Max
Max Torque 1500 Nm



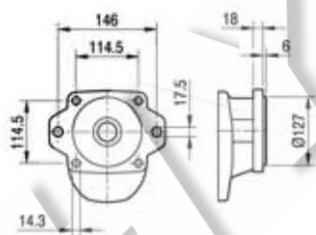
Coppia Max
Max Torque 450 Nm



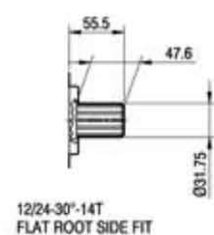
12/24-30°-14T
FLAT ROOT SIDE FIT



Coppia Max
Max Torque 900 Nm



Coppia Max
Max Torque 450 Nm



12/24-30°-14T
FLAT ROOT SIDE FIT



Coppia Max
Max Torque 900 Nm

Part number:

076-11101d

HYDROMA

HYDRAULICKÉ SYSTÉMY

**HIDROMA
SYSTEMS**

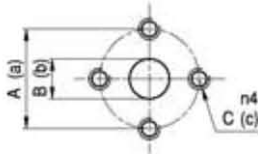
UKŁADY HYDRAULICZNE

HYDROMA

ГИДРАВЛИЧЕСКИЕ СИСТЕМЫ

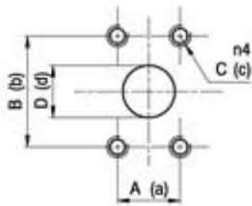
ALP4A

PORTE / PORTS



TIPO TYPE	ASPIRAZIONE INLET			MANDATA OUTLET		
	A	B	C	a	b	c
ALP4 ... 130 + ALP4 ... 160	62	36	M10	56	30	M10
ALP4 ... 190 + ALP4 ... 250	72,5	45	M12	62	36	M10
ALP4 ... 270 + ALP4 ... 300	92	56	M12	72,5	45	M12

I valori delle coppie di serraggio delle viti presenti nel kit raccordo sono indicate a pag 57 (capitolo accessori).
Tightening torques of the fittings screws are specified on page 57 (accessories section).



TIPO TYPE	ASPIRAZIONE INLET				MANDATA OUTLET			
	A	B	C	D	a	b	c	d
ALP4 ... 130	35,7	69,8	1/2-13 UNC	38	30,2	58,7	7/16-14 UNC	31,5
ALP4 ... 160 + ALP4 ... 300	42,8	77,7	1/2-13 UNC	51	35,7	69,8	1/2-13 UNC	38

I valori delle coppie di serraggio delle viti presenti nel kit raccordo sono indicate a pag 57 (capitolo accessori).
Tightening torques of the fittings screws are specified on page 57 (accessories section).

Part number:

076-11101e

HYDROMA

HYDRAULICKÉ SYSTÉMY

**HIDROMA
SYSTEMS**

UKŁADY HYDRAULICZNE

HYDROMA

ГИДРАВЛИЧЕСКИЕ СИСТЕМЫ

Potenza assorbita Absorbed power P [kW]
Momento torcente assorbito Absorbed torque M [Nm]
Velocità di rotazione Drive speed n [giri/min] [rpm]

