

Part number:

**HYDROMA**

HYDRAULICKÉ SYSTÉMY

**HIDROMA  
SISTEMS**

UKŁADY HYDRAULICZNE

**HYDROMA**

ГИДРАВЛИЧЕСКИЕ СИСТЕМЫ

**FLOW CONTROL VALVES  
COMPENSATED INSERT-TYPE**

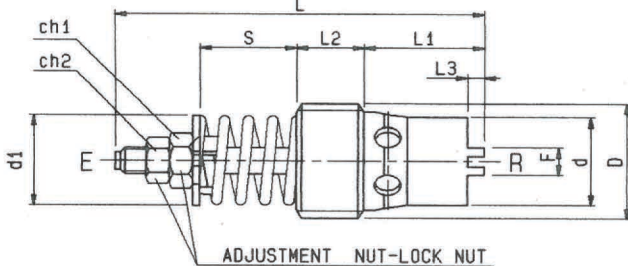
PAG. C.21.05

**VCDC-H**

**OD.22.03.02 - Y - Z**

DENOMINAZIONE VALVOLA  
VALVE DENOMINATION

CODICE D'ORDINAZIONE  
ORDERING CODE

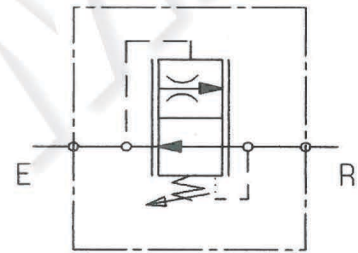
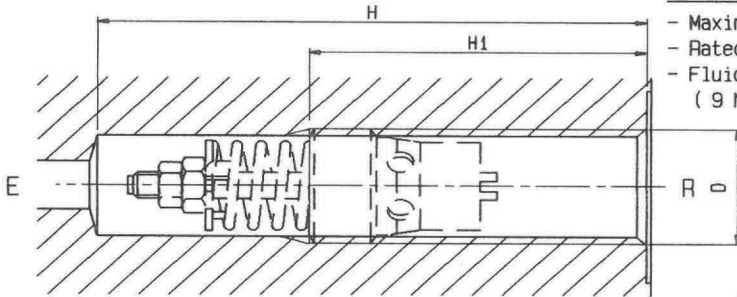


**DESCRIPTION - OPERATION**

These valves can be used both as lowering control valves and as pressure compensated flow regulators. In the first case they keep the lowering speed largely independent from the load, while in the second case they limit flow to the preset value, which can be adjusted within regulated flow range turning the nut. (see diagrams length to adjust - flow)

**FEATURES - RATINGS**

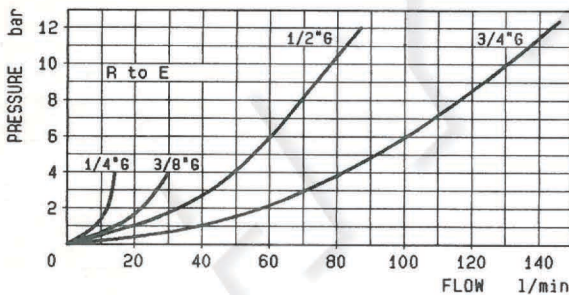
- Maximum Operating Pressure : 300 bar
- Rated Flow : see table
- Fluid cleanliness class : 18/14 ISO 4406 ( 9 NAS 1638 ) or better



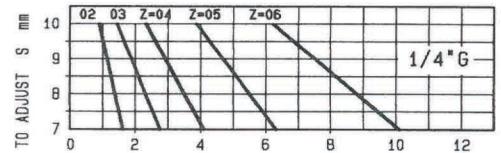
<b>FLOW</b>	see table
<b>PRESSURE</b>	<b>300</b> bar

10	21	60	54	85	23	20	3.5	6	7	6		15 Nm	0.070	150	3/4"G	04
8	16	49	45	72	15	18.4	2.5	6	7	6		12 Nm	0.038	67	1/2"G	03
7	13.5	43	40	63	14	11.5	2	4	7	6		8 Nm	0.025	25	3/8"G	02
7	12.5	38.3	35	57	10.3	10	1.75	4	5.5	4.5		6 Nm	0.012	10	1/4"G	09
L2	L1	L	H1	H	d1	d	L3	F	ch1	ch2		TIGHTENING TORQUE CARTRIDGE	WEIGHT kg	FLOW MAX. l/min	D	Y

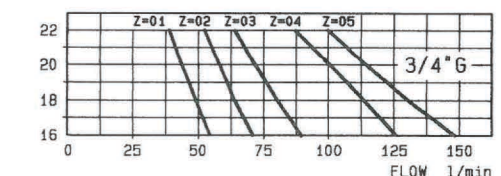
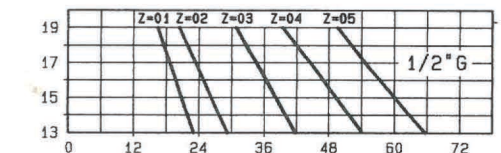
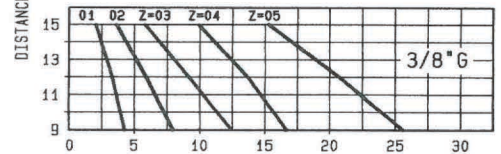
**PRESSURE DROP**



Following curves refer to 50 bar operating pressure.



Z	REGULATED FLOW RANGE			
	E → R l/min			
	1/4"G	3/8"G	1/2"G	3/4"G
01	—	2.5-4.0	16-21	37-50
02	1-1.6	4.0-6.3	21-28	50-67
03	1.6-2.5	6.3-10	28-37	67-90
04	2.5-4.0	10-16	37-50	90-120
05	4.0-6.3	16-25	50-67	120-150
05	6.3-10	—	—	—



GEN. 96