

Part number:

HYDROMA

HYDRAULICKÉ SYSTÉMY

**HIDROMA
SYSTEMS**

UKŁADY HYDRAULICZNE

HYDROMA

ГИДРАВЛИЧЕСКИЕ СИСТЕМЫ

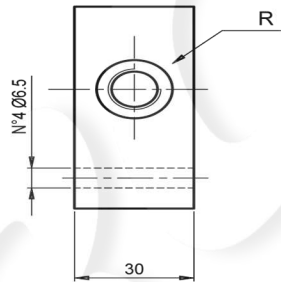
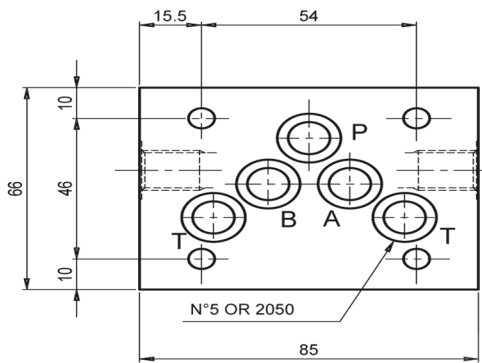
SUBPLATE FOR PACKING

TYPE EB3...5... AND EB505

BASE DI COLLEGAMENTO

TIPO EB3...5... ED EB505

Sub plate for packing. Weight = 1 kg
Base di collegamento. Peso = 1 Kg
Set of 5 pcs. / Confezione da 5 pezzi



Tipo Type	Utilizzi Sorties	
0	A e B	
3	Side Seite B	Side Seite A
6	P e P	

Ordering code:

Esempio di ordinazione: **EB3** * **5** *

Sub plate for packing = B3
Base di collegamento =

see table /Vedere tabella a fianco 0 - 3 - 6

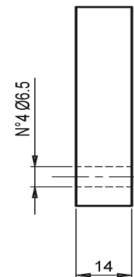
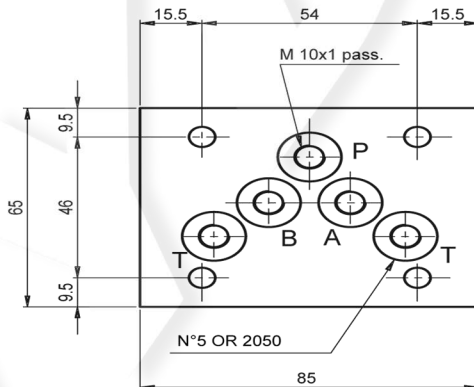
14 = R 1/4"G
38 = R 3/8"G

CETOP 5

Subplate for packing with A-B-P-T threaded M10x1. Weight = 0.6 Kg

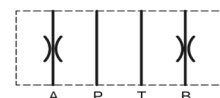
Base di collegamento con A-B-P-T filettati M10x1. Peso = 0.6 Kg

Set of 10 pcs. / Confezione da 10 pezzi



Example:
Throttle on A & B

Esempio:
Strozzatura su A e B



Ordering code

Esempio di ordinazione: **EB5** **0** **5**

EUROFLUID
subplate for packing = B5
with threaded M10x1
Base di collegamento =
con fori filettati M10x1

CETOP 5

0 = version with A-B-P-T threaded
= versione con fori filettati passanti