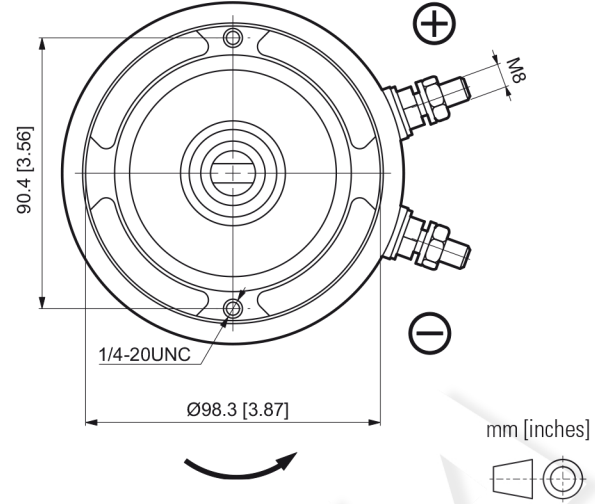
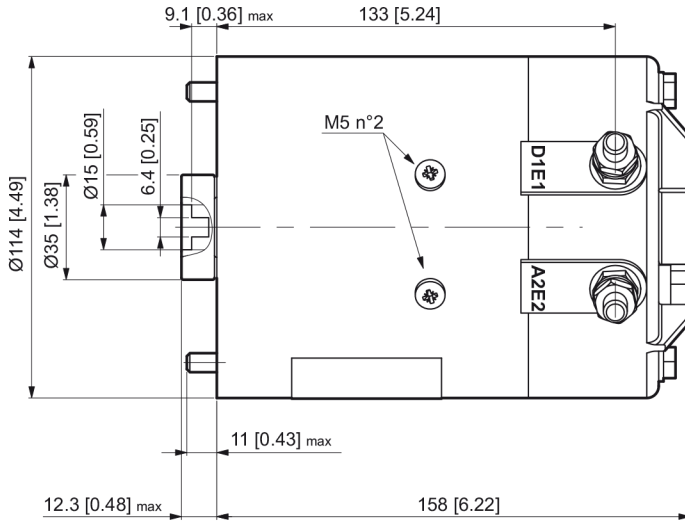


25021100

12 VDC - 1.6 KW - D.115 MOTOR



RATED FEATURES

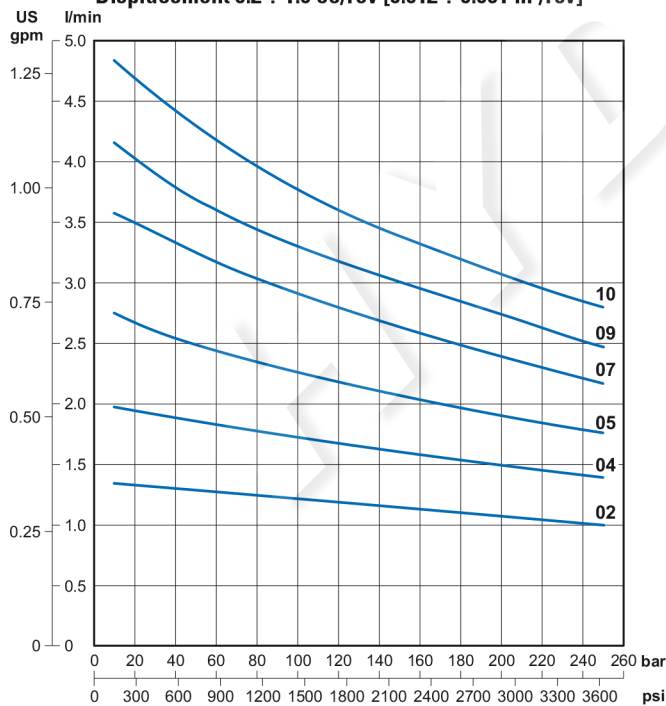
| | |
|--|----------------------|
| Voltage | 12 VDC |
| Power | 1.6 kW |
| Nominal diameter | 115 mm [4.53 in] |
| Motor type | Wound field compound |
| Rotation | CCW |
| Protection class IP (with motor assembled on hydraulic power pack) | 54 |
| S2 / S3 duty service | see curves |
| Insulation class | F |
| Weight | 6.7 kg [14.77 lb] |

PUMP TYPE

| Code | cc/rev. | GR (Size) | Code | cc/rev. | GR (Size) |
|------|---------|-----------|------|---------|-----------|
| 02 | 0.25 | 05 | 22 | 2.2 | 1 |
| 04 | 0.45 | 05 | 26 | 2.6 | 1 |
| 05 | 0.56 | 05 | 32 | 3.2 | 1 |
| 07 | 0.75 | 05/1 | 38 | 3.8 | 1 |
| 09 | 0.9 | 05/1 | 43 | 4.3 | 1 |
| 10 | 1.0 | 05/1 | 48 | 4.8 | 1 |
| 12 | 1.2 | 05/1 | 60 | 6.0 | 1 |
| 15 | 1.5 | 1 | 63 | 6.3 | 1 |
| 17 | 1.7 | 1 | 78 | 7.8 | 1 |
| 20 | 2.0 | 1 | | | |

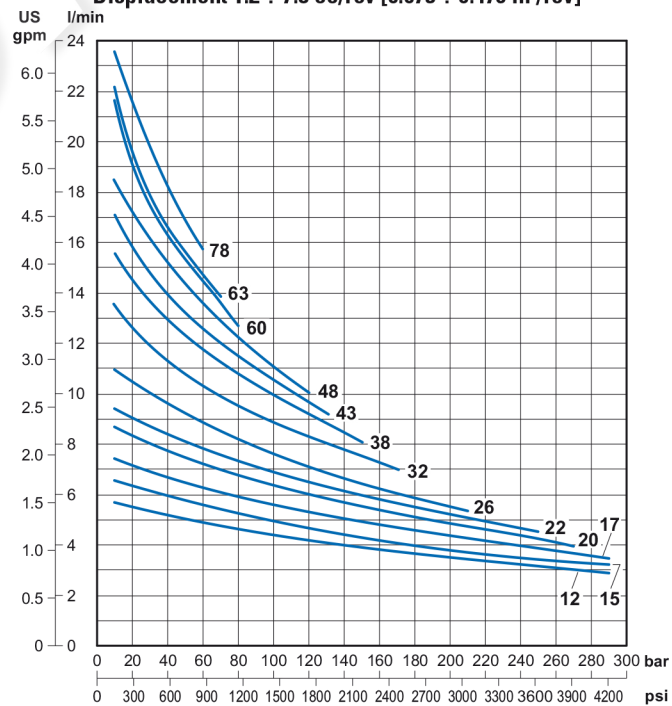
Performance with GR05 / GR1 pumps

Displacement 0.2 ÷ 1.0 cc/rev [0.012 ÷ 0.061 in³/rev]



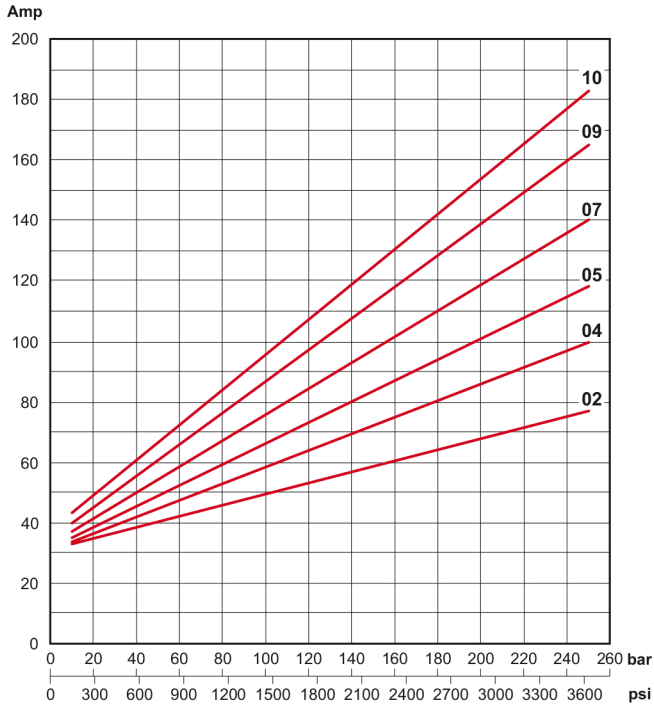
Performance with GR05 / GR1 pumps

Displacement 1.2 ÷ 7.8 cc/rev [0.073 ÷ 0.476 in³/rev]

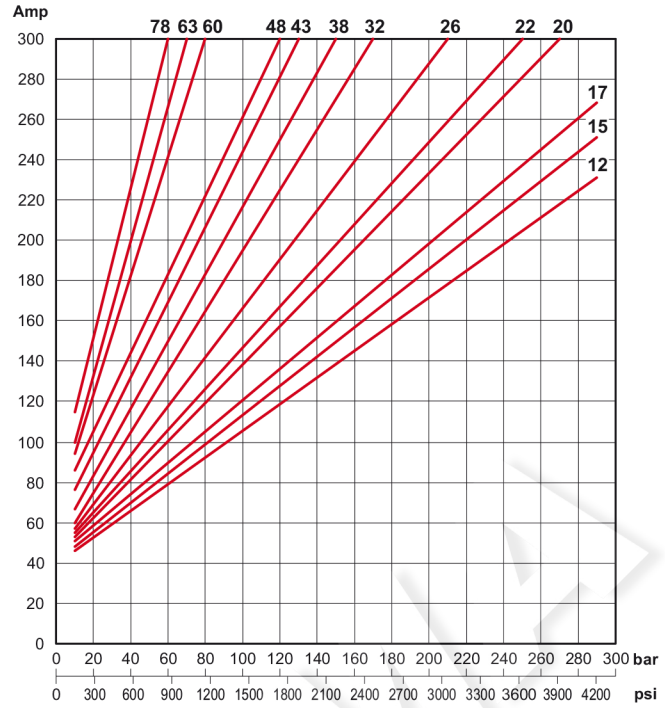


25021100

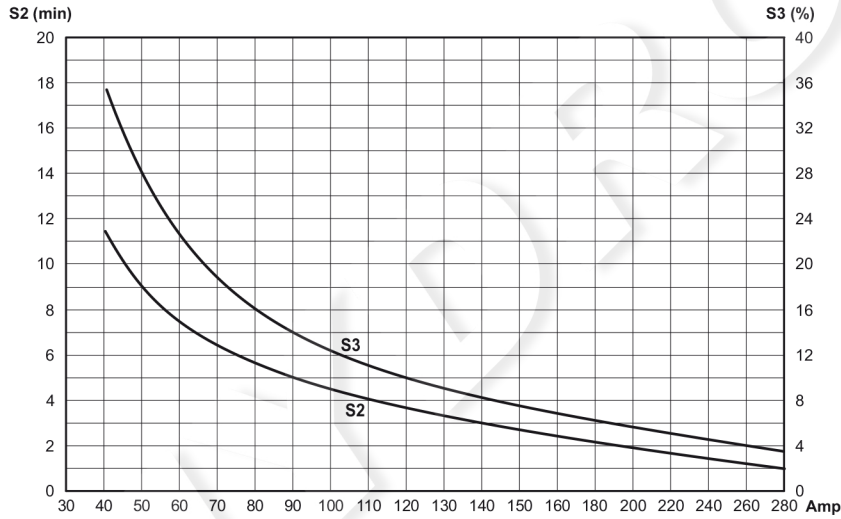
Current with GR05 / GR1 pumps
Displacement $0.2 \div 1.0$ cc/rev [$0.012 \div 0.061$ in³/rev]



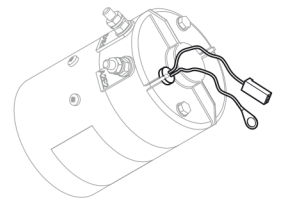
Current with GR05 / GR1 pumps
Displacement $1.2 \div 7.8$ cc/rev [$0.073 \div 0.476$ in³/rev]



Thermal characteristics S2 - S3



Motor with thermal switch



ORDERING CODE

| Code | Description |
|-----------------|--|
| 25021100 | 12VDC motor - 1.6 kW |
| 25016600 | 12VDC motor - 1.6 kW with thermal switch |
| 90340009 | Thermal switch |

| Code | Description |
|---------------------|---|
| KIT07012.025 | Starting switch kit 12VDC - 120A (fixing with screws) |

Reference data: maximum nominal pressure $P_{max} = 250$ bar. Oil ISO VG32 temperature 35°C (viscosity 40 cSt), outside temperature 25°C .

Maximum nominal current $I_{max} = 140\text{A}$. Stabilized voltage to 12 Vdc detected at the terminals of the electric motor.